

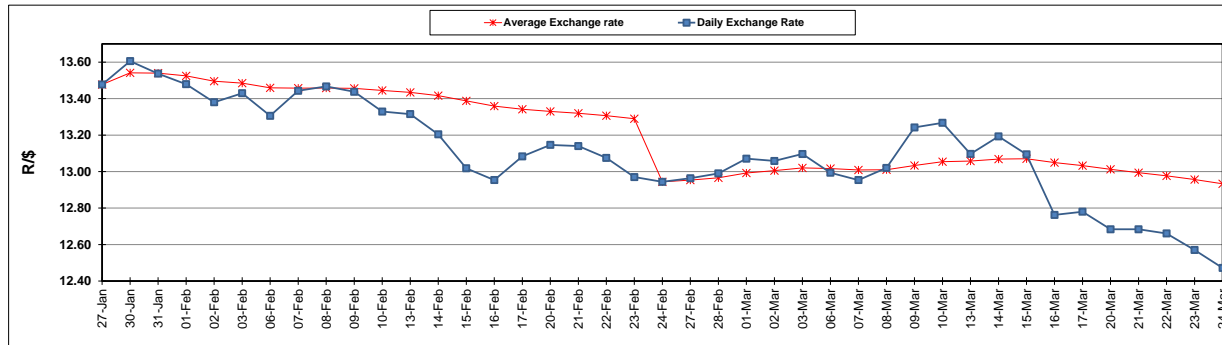
	PETROL 95 ULP	PETROL 93 ULP & LRP	DIESEL 0.05%	DIESEL 0.005%	ILL. PAR.
GAUTENG PUMP PRICE (SA c/l) AS FROM 01/03/2017	1 354.000	1 330.000	-	-	-
WHOLESALE PRICE (SA c/l) AS FROM 01/03/2017	-	-	1 160.830	1 163.230	750.588
SINGLE NATIONAL MAXIMUM RETAIL PRICE	-	-	-	-	966.000
BASIC FUEL PRICE - 24/03/2017 (SA c/l)	520.277	505.660	494.658	497.657	491.239
PRESS RELEASE CONTRIBUTION TO BFP 01/03/2017 - 24/03/2017 (SA c/l)	612.870	598.870	588.630	591.030	583.128
UNIT OVER/(UNDER) RECOVERY (SA c/l) - 24/03/2017	92.593	93.210	93.972	93.373	91.889
AVERAGE BASIC FUEL PRICE 24/02/2017 - 24/03/2017	551.043	539.085	542.723	545.643	535.419
AVERAGE UNIT OVER/(UNDER) RECOVERY 24/02/2017- 24/03/2017	62.970	60.928	46.192	45.673	48.852

ANALYSIS MOVEMENT OF AVERAGE OVER/(UNDER) RECOVERY

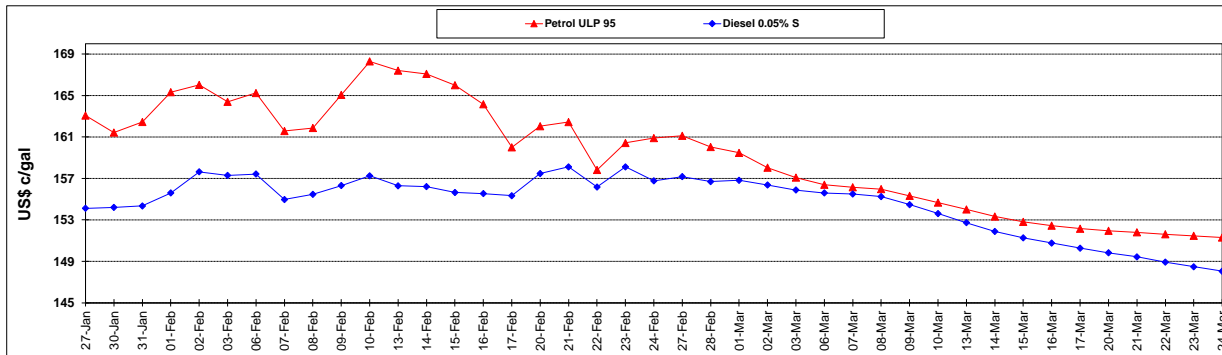
	PETROL 95	PETROL 93	DIESEL 0.05%	DIESEL 0.005%	ILL. PAR.
- MOVEMENT IN INTERNATIONAL PRODUCT PRICES	61.402	59.394	44.649	44.120	47.329
- MOVEMENT IN EXCHANGE RATE	1.568	1.534	1.544	1.553	1.523
AVERAGE UNIT OVER/(UNDER) RECOVERY 24/02/2017 - 24/03/2017	62.970	60.928	46.192	45.673	48.852

R/\$ EXCHANGE RATE - (R/\$ 12.4718 - 24/03/2017)

EXCHANGE RATE USED IN BASIC FUEL PRICE



INTERNATIONAL PRODUCT PRICES OF BASKET USED IN BASIC FUEL PRICE



BASIC FUEL PRICE IN SA CENTS PER LITRE

