

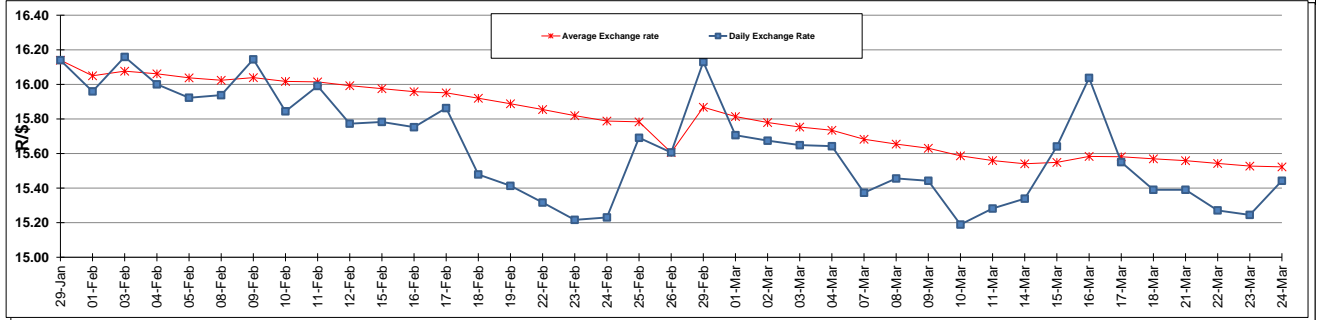
	PETROL 95 ULP	PETROL 93 ULP & LRP	DIESEL 0.05%	DIESEL 0.005%	ILL. PAR.
GAUTENG PUMP PRICE (SA c/l) AS FROM 02/03/2016	1 174.000	1 146.000	-	-	-
WHOLESALE PRICE (SA c/l) AS FROM 02/03/2016	-	-	958.170	961.570	605.028
SINGLE NATIONAL MAXIMUM RETAIL PRICE	-	-	-	-	772.000
BASIC FUEL PRICE - 24/03/2016 (SA c/l)	571.513	555.426	492.825	497.521	506.097
PRESS RELEASE CONTRIBUTION TO BFP 02/03/2016 - 24/03/2016 (SA c/l)	487.970	469.970	427.630	431.030	445.128
UNIT OVER/(UNDER) RECOVERY (SA c/l) - 24/03/2016	(83.543)	(85.456)	(65.195)	(66.491)	(60.969)
AVERAGE BASIC FUEL PRICE 24/03/2016 - 24/03/2016	546.564	525.175	487.738	493.443	498.929
AVERAGE UNIT OVER/(UNDER) RECOVERY 26/02/2016 - 24/03/2016	(48.244)	(44.855)	(62.358)	(64.513)	(56.351)

### ANALYSIS MOVEMENT OF AVERAGE OVER/(UNDER) RECOVERY

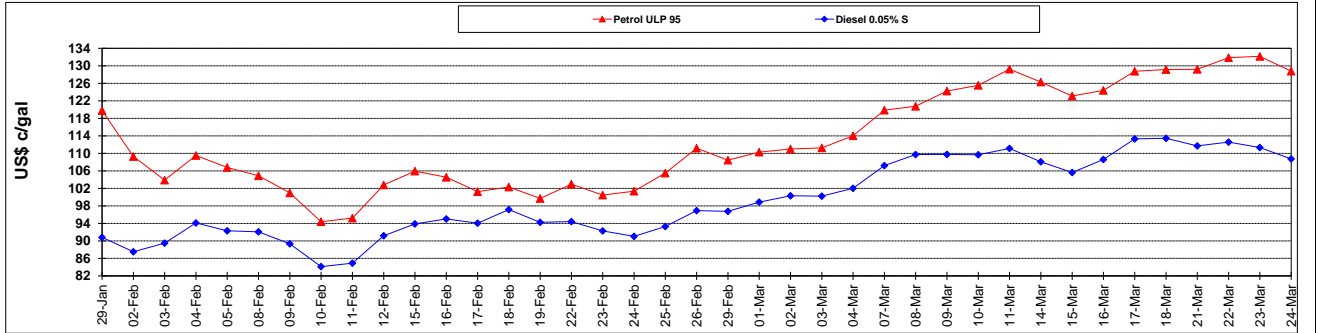
	PETROL 95	PETROL 93	DIESEL 0.05%	DIESEL 0.005%	ILL. PAR.
- MOVEMENT IN INTERNATIONAL PRODUCT PRICES	(57.409)	(53.662)	(70.537)	(72.787)	(64.717)
- MOVEMENT IN EXCHANGE RATE	9.165	8.807	8.179	8.274	8.366
AVERAGE UNIT OVER/(UNDER) RECOVERY 26/02/2016 - 24/03/2016	(48.244)	(44.855)	(62.358)	(64.513)	(56.351)

**R/\$ EXCHANGE RATE - (R/\$ 15.4428 - 24/03/2016)**

### EXCHANGE RATE USED IN BASIC FUEL PRICE



### INTERNATIONAL PRODUCT PRICES OF BASKET USED IN BASIC FUEL PRICE



### BASIC FUEL PRICE IN SA CENTS PER LITRE

