

UPDATE OF THE BASIC FUEL PRICE

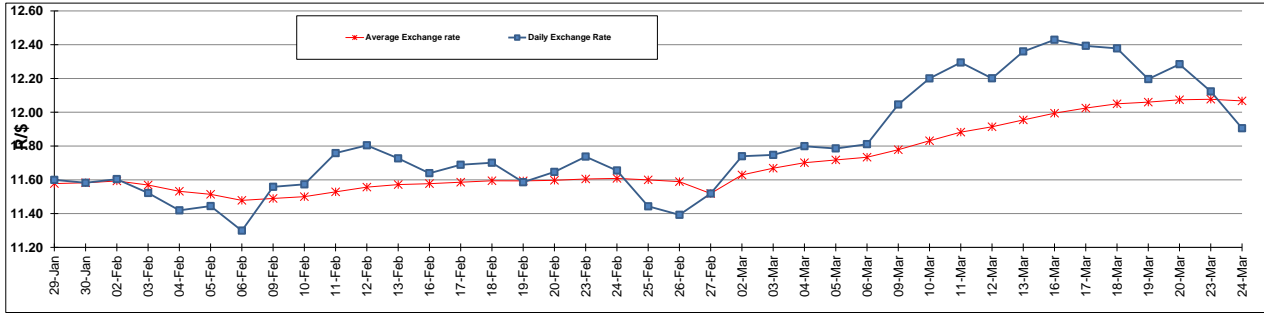
	PETROL 95 ULP	PETROL 93 ULP & LRP	DIESEL 0.05%	DIESEL 0.005%	ILL. PAR.
GAUTENG PUMP PRICE (SA c/l) AS FROM 04/03/2015	1,127.000	1,105.000	-	-	-
WHOLESALE PRICE (SA c/l) AS FROM 04/03/2015	-	-	1,000.090	1,004.490	718.928
SINGLE NATIONAL MAXIMUM RETAIL PRICE	-	-	-	-	931.000
BASIC FUEL PRICE - 24/03/2015 (SA c/l)	586.182	568.479	559.407	566.152	554.167
PRESS RELEASE CONTRIBUTION TO BFP 04/03/2015 - 24/03/2015 (SA c/l)	536.250	524.250	554.630	559.030	564.128
UNIT OVER/(UNDER) RECOVERY (SA c/l) - 24/03/2015	(49.932)	(44.229)	(4.777)	(7.122)	9.961
AVERAGE BASIC FUEL PRICE 27/02/2015 - 24/03/2015	601.186	583.391	586.434	592.447	576.733
AVERAGE UNIT OVER/(UNDER) RECOVERY 27/02/2015 - 24/03/2015	(80.936)	(75.141)	(44.137)	(45.750)	(24.771)

ANALYSIS MOVEMENT OF AVERAGE OVER/(UNDER) RECOVERY

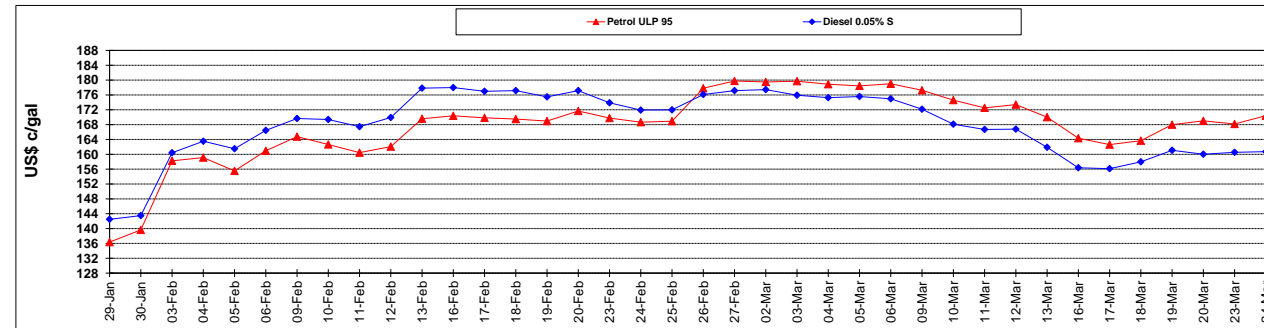
	PETROL 95	PETROL 93	DIESEL 0.05%	DIESEL 0.005%	ILL. PAR.
- MOVEMENT IN INTERNATIONAL PRODUCT PRICES	(57.107)	(52.018)	(20.893)	(22.268)	(1.913)
- MOVEMENT IN EXCHANGE RATE	(23.829)	(23.123)	(23.244)	(23.482)	(22.859)
AVERAGE UNIT OVER/(UNDER) RECOVERY 27/02/2015 - 24/03/2015	(80.936)	(75.141)	(44.137)	(45.750)	(24.771)

R/\$ EXCHANGE RATE - (R/\$ 11.9052 - 24/03/2015)

EXCHANGE RATE USED IN BASIC FUEL PRICE



INTERNATIONAL PRODUCT PRICES OF BASKET USED IN BASIC FUEL PRICE



BASIC FUEL PRICE IN SA CENTS PER LITRE

