

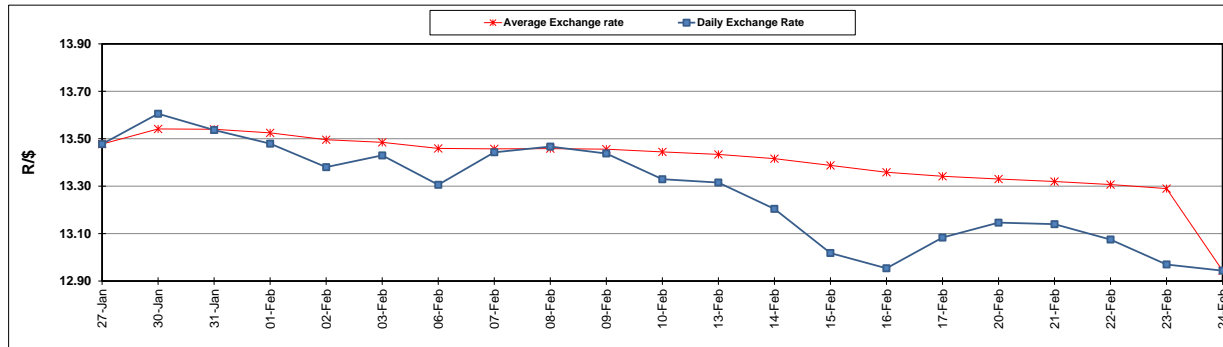
	PETROL 95 ULP	PETROL 93 ULP & LRP	DIESEL 0.05%	DIESEL 0.005%	ILL. PAR.
GAUTENG PUMP PRICE (SA c/l) AS FROM 01/03/2017	1,354.000	1,330.000	-	-	-
WHOLESALE PRICE (SA c/l) AS FROM 01/03/2017	-	-	1,160.830	1,163.230	750.588
SINGLE NATIONAL MAXIMUM RETAIL PRICE	-	-	-	-	966.000
BASIC FUEL PRICE - 24/02/2017 (SA c/l)	584.864	573.682	573.465	576.394	567.533
PRESS RELEASE CONTRIBUTION TO BFP 24/02/2017 - 24/02/2017 (SA c/l)	620.870	606.870	590.630	593.030	591.128
UNIT OVER/(UNDER) RECOVERY (SA c/l) - 24/02/2017	36.006	33.188	17.165	16.636	23.595
AVERAGE BASIC FUEL PRICE 24/02/2017 - 24/02/2017	584.864	573.682	573.465	576.394	567.533
AVERAGE UNIT OVER/(UNDER) RECOVERY 24/02/2017- 24/02/2017	36.006	33.188	17.165	16.636	23.595

ANALYSIS MOVEMENT OF AVERAGE OVER/(UNDER) RECOVERY

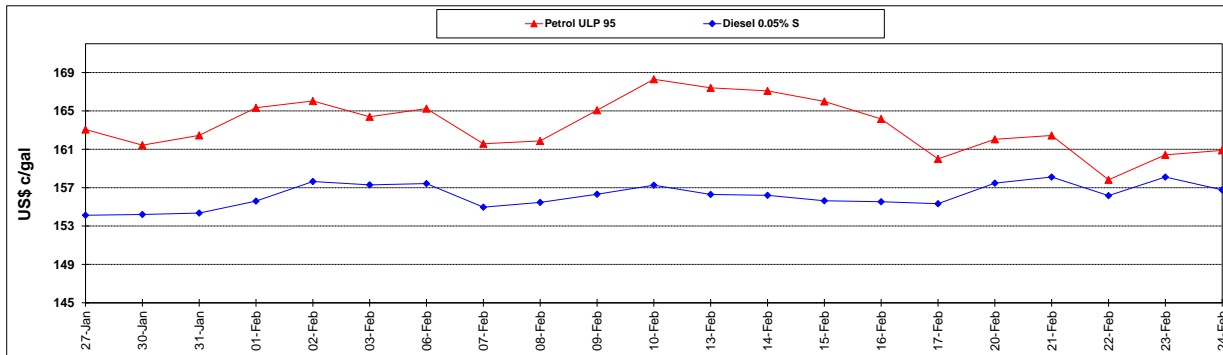
	PETROL 95	PETROL 93	DIESEL 0.05%	DIESEL 0.005%	ILL. PAR.
- MOVEMENT IN INTERNATIONAL PRODUCT PRICES	34.822	32.027	16.004	15.469	22.446
- MOVEMENT IN EXCHANGE RATE	1.184	1.161	1.161	1.167	1.149
AVERAGE UNIT OVER/(UNDER) RECOVERY 24/02/2017 - 24/02/2017	36.006	33.188	17.165	16.636	23.595

R/\$ EXCHANGE RATE - (R/\$ 12.9438- 24/02/2017)

EXCHANGE RATE USED IN BASIC FUEL PRICE



INTERNATIONAL PRODUCT PRICES OF BASKET USED IN BASIC FUEL PRICE



BASIC FUEL PRICE IN SA CENTS PER LITRE

