

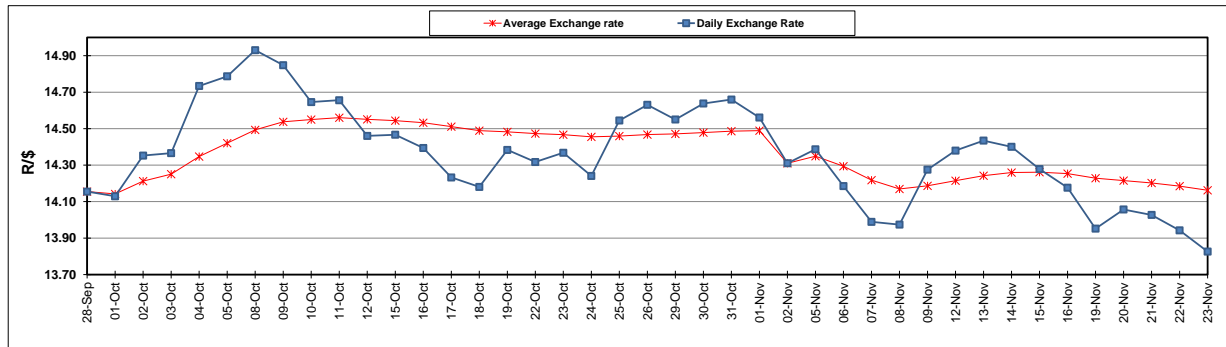
	PETROL 95 ULP	PETROL 93 ULP & LRP	DIESEL 0.05%	DIESEL 0.005%	ILL. PAR.
GAUTENG PUMP PRICE (SA c/l) AS FROM 07/11/2018	1 708.000	1 685.000	-	-	-
WHOLESALE PRICE (SA c/l) AS FROM 07/11/2018	-	-	1 612.750	1 620.150	1 085.088
SINGLE NATIONAL MAXIMUM RETAIL PRICE	-	-	-	-	1 409.000
BASIC FUEL PRICE - 23/11/2018 (SA c/l)	579.553	566.438	687.359	692.066	703.484
PRESS RELEASE CONTRIBUTION TO BFP 07/11/2018 - 23/11/2018 (SA c/l)	829.250	816.250	917.630	925.030	912.128
UNIT OVER/(UNDER) RECOVERY - 23/11/2018 (SA c/l)	249.697	249.812	230.271	232.964	208.644
AVERAGE BASIC FUEL PRICE 02/11/2018 - 23/11/2018	657.164	646.737	785.250	791.181	789.913
AVERAGE UNIT OVER/(UNDER) RECOVERY 02/11/2018 - 23/11/2018	176.196	173.623	127.505	128.411	116.965

ANALYSIS MOVEMENT OF AVERAGE OVER/(UNDER) RECOVERY

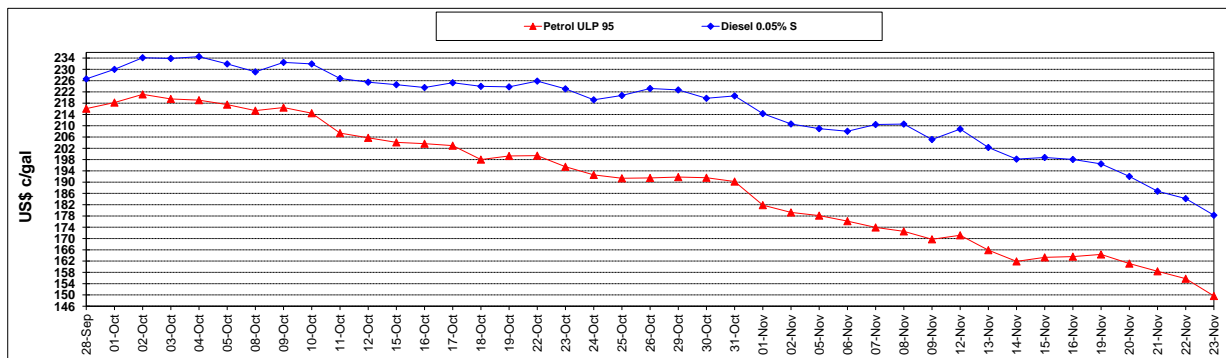
	PETROL 95	PETROL 93	DIESEL 0.05%	DIESEL 0.005%	ILL. PAR.
- MOVEMENT IN INTERNATIONAL PRODUCT PRICES	161.022	158.690	109.374	110.144	98.726
- MOVEMENT IN EXCHANGE RATE	15.174	14.933	18.131	18.268	18.239
AVERAGE UNIT OVER/(UNDER) RECOVERY 02/11/2018 - 23/11/2018	176.196	173.623	127.505	128.411	116.965

R/\$ EXCHANGE RATE - (R/\$13.8260 - 23/11/2018)

EXCHANGE RATE USED IN BASIC FUEL PRICE



INTERNATIONAL PRODUCT PRICES OF BASKET USED IN BASIC FUEL PRICE



BASIC FUEL PRICE IN SA CENTS PER LITRE

