

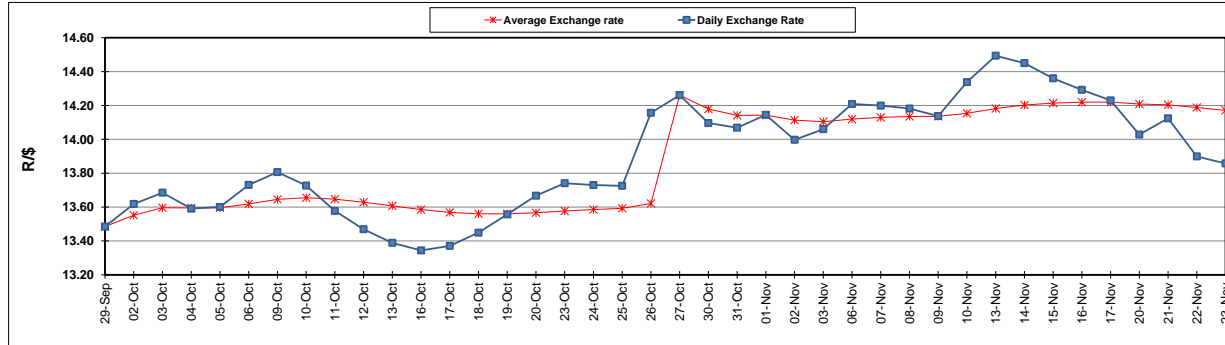
	PETROL 95 ULP	PETROL 93 ULP & LRP	DIESEL 0.05%	DIESEL 0.005%	ILL. PAR.
GAUTENG PUMP PRICE (SA c/l) AS FROM 01/11/2017	1 405.000	1 378.000	-	-	-
WHOLESALE PRICE (SA c/l) AS FROM 01/11/2017	-	-	1 235.330	1 244.730	792.088
SINGLE NATIONAL MAXIMUM RETAIL PRICE	-	-	-	-	1 021.000
BASIC FUEL PRICE -23/11/2017 (SA c/l)	678.185	662.814	682.987	686.838	692.637
PRESS RELEASE CONTRIBUTION TO BFP 01/11/2017 - 23/11/2017 (SA c/l)	619.070	602.070	623.630	633.030	621.128
UNIT OVER/(UNDER) RECOVERY (SA c/l) - 23/11/2017	(59.115)	(60.744)	(59.357)	(53.808)	(71.509)
AVERAGE BASIC FUEL PRICE 27/10/2017 - 23/11/2017	689.016	673.347	684.017	690.087	693.639
AVERAGE UNIT OVER/(UNDER) RECOVERY 27/10/2017 - 23/11/2017	(70.546)	(71.877)	(63.837)	(61.107)	(75.661)

ANALYSIS MOVEMENT OF AVERAGE OVER/(UNDER) RECOVERY

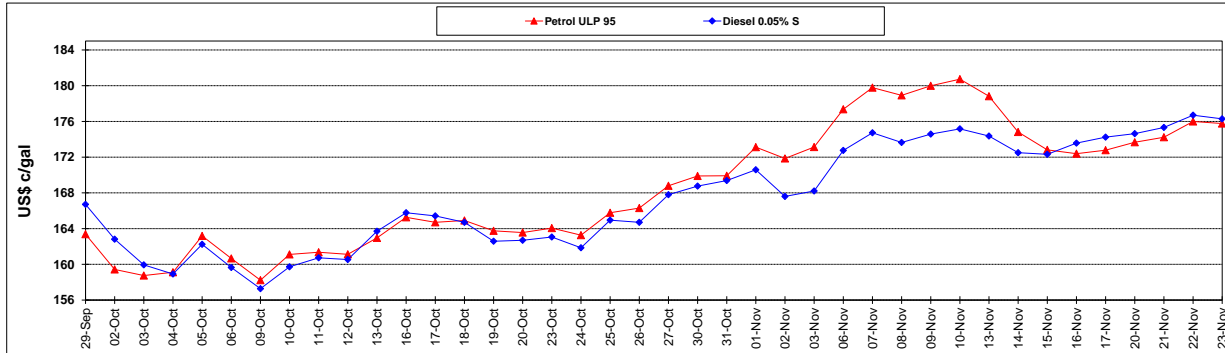
	PETROL 95	PETROL 93	DIESEL 0.05%	DIESEL 0.005%	ILL. PAR.
- MOVEMENT IN INTERNATIONAL PRODUCT PRICES	(43.790)	(45.730)	(37.275)	(34.310)	(48.726)
- MOVEMENT IN EXCHANGE RATE	(26.756)	(26.147)	(26.562)	(26.797)	(26.935)
AVERAGE UNIT OVER/(UNDER) RECOVERY 27/10/2017 - 23/11/2017	(70.546)	(71.877)	(63.837)	(61.107)	(75.661)

R/\$ EXCHANGE RATE - (R/\$ 13.8578 23/11/2017)

EXCHANGE RATE USED IN BASIC FUEL PRICE



INTERNATIONAL PRODUCT PRICES OF BASKET USED IN BASIC FUEL PRICE



BASIC FUEL PRICE IN SA CENTS PER LITRE

