

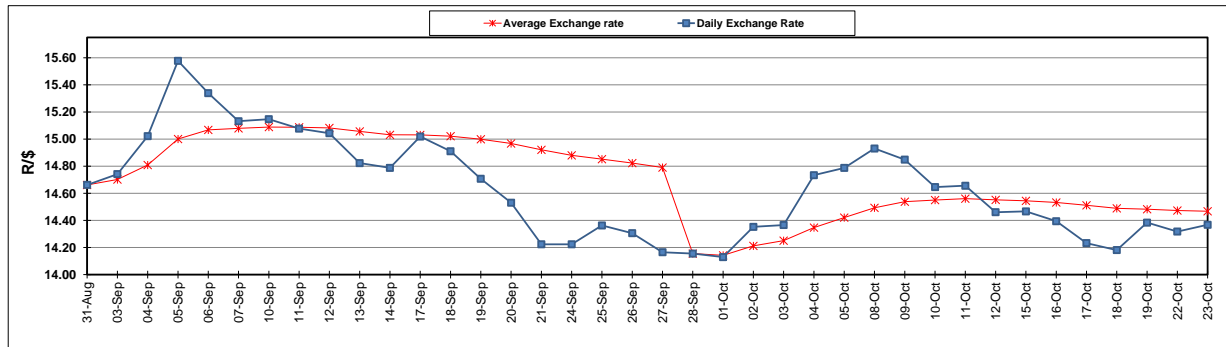
	PETROL 95 ULP	PETROL 93 ULP & LRP	DIESEL 0.05%	DIESEL 0.005%	ILL. PAR.
GAUTENG PUMP PRICE (SA c/l) AS FROM 03/10/2018	1 708.000	1 685.000	-	-	-
WHOLESALE PRICE (SA c/l) AS FROM 03/10/2018	-	-	1 564.830	1 569.230	1 057.088
SINGLE NATIONAL MAXIMUM RETAIL PRICE	-	-	-	-	1 372.000
BASIC FUEL PRICE - 23/10/2018 (SA c/l)	776.005	764.931	884.366	889.531	880.519
PRESS RELEASE CONTRIBUTION TO BFP 03/10/2018 - 23/10/2018 (SA c/l)	851.170	838.170	891.630	896.030	884.128
UNIT OVER/(UNDER) RECOVERY - 23/10/2018 (SA c/l)	75.165	73.239	7.264	6.499	3.609
AVERAGE BASIC FUEL PRICE 28/09/2018 - 23/10/2018	836.101	823.123	910.053	917.031	907.280
AVERAGE UNIT OVER/(UNDER) RECOVERY 28/09/2018 - 23/10/2018	(1.598)	(1.453)	(39.089)	(41.668)	(40.486)

### ANALYSIS MOVEMENT OF AVERAGE OVER/(UNDER) RECOVERY

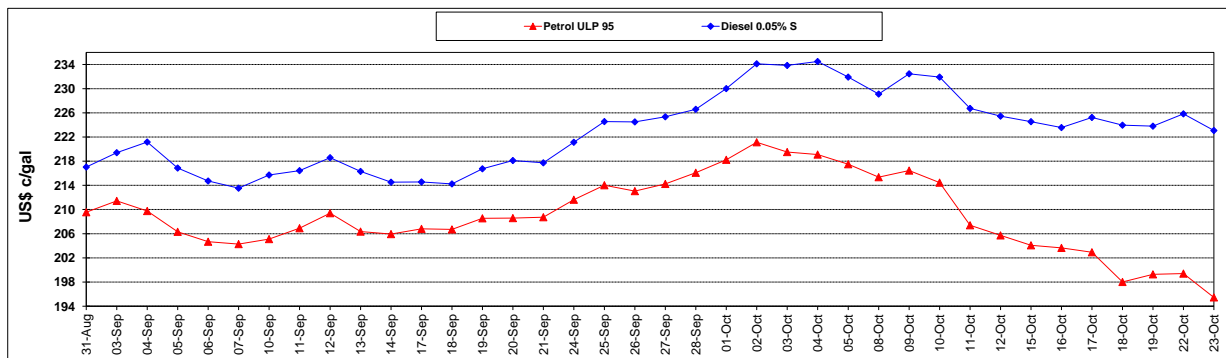
	PETROL 95	PETROL 93	DIESEL 0.05%	DIESEL 0.005%	ILL. PAR.
- MOVEMENT IN INTERNATIONAL PRODUCT PRICES	(20.260)	(19.825)	(59.402)	(62.136)	(60.735)
- MOVEMENT IN EXCHANGE RATE	18.662	18.372	20.312	20.468	20.250
AVERAGE UNIT OVER/(UNDER) RECOVERY 28/09/2018 - 23/10/2018	(1.598)	(1.453)	(39.089)	(41.668)	(40.486)

### R/\$ EXCHANGE RATE - (R/\$14.3678 - 23/10/2018)

#### EXCHANGE RATE USED IN BASIC FUEL PRICE



#### INTERNATIONAL PRODUCT PRICES OF BASKET USED IN BASIC FUEL PRICE



#### BASIC FUEL PRICE IN SA CENTS PER LITRE

