

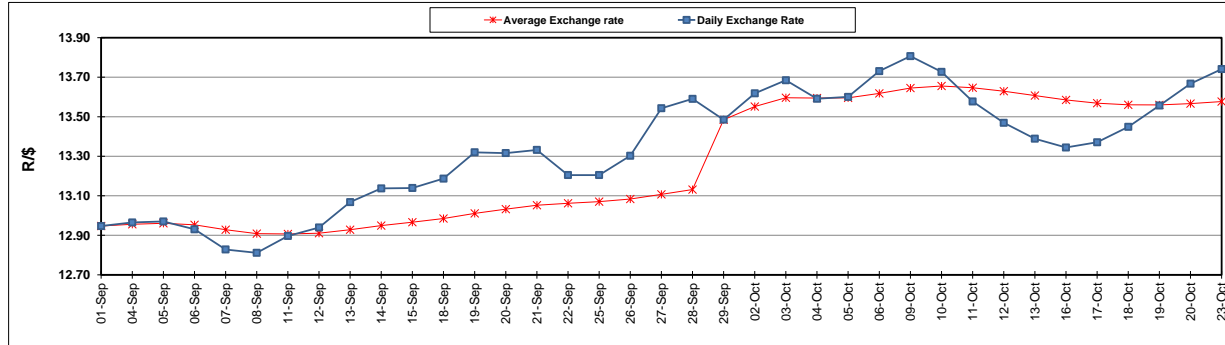
	PETROL 95 ULP	PETROL 93 ULP & LRP	DIESEL 0.05%	DIESEL 0.005%	ILL. PAR.
GAUTENG PUMP PRICE (SA c/l) AS FROM 04/10/2017	1 401.000	1 374.000	-	-	-
WHOLESALE PRICE (SA c/l) AS FROM 04/10/2017	-	-	1 212.330	1 217.730	771.088
SINGLE NATIONAL MAXIMUM RETAIL PRICE	-	-	-	-	992.000
BASIC FUEL PRICE - 23/10/2017 (SA c/l)	626.493	612.015	625.323	634.346	625.856
PRESS RELEASE CONTRIBUTION TO BFP 04/10/2017 - 23/10/2017 (SA c/l)	615.070	598.070	600.630	606.030	600.128
UNIT OVER/(UNDER) RECOVERY (SA c/l) - 23/10/2017	(11.423)	(13.945)	(24.693)	(28.316)	(25.728)
AVERAGE BASIC FUEL PRICE 29/09/2017 - 23/10/2017	612.024	596.024	614.657	624.136	610.540
AVERAGE UNIT OVER/(UNDER) RECOVERY 29/09/2017 - 23/10/2017	(2.071)	(2.366)	(21.438)	(25.517)	(17.294)

ANALYSIS MOVEMENT OF AVERAGE OVER/(UNDER) RECOVERY

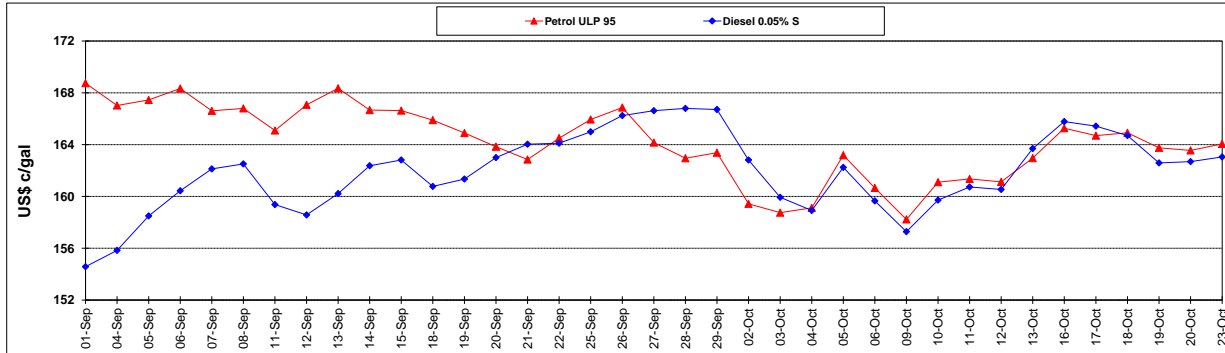
	PETROL 95	PETROL 93	DIESEL 0.05%	DIESEL 0.005%	ILL. PAR.
- MOVEMENT IN INTERNATIONAL PRODUCT PRICES	18.001	17.182	(1.279)	(5.048)	2.731
- MOVEMENT IN EXCHANGE RATE	(20.073)	(19.548)	(20.160)	(20.470)	(20.025)
AVERAGE UNIT OVER/(UNDER) RECOVERY 29/09/2017 - 23/10/2017	(2.071)	(2.366)	(21.438)	(25.517)	(17.294)

R/\$ EXCHANGE RATE - (R/\$ 13.7410- 23/10/2017)

EXCHANGE RATE USED IN BASIC FUEL PRICE



INTERNATIONAL PRODUCT PRICES OF BASKET USED IN BASIC FUEL PRICE



BASIC FUEL PRICE IN SA CENTS PER LITRE

