

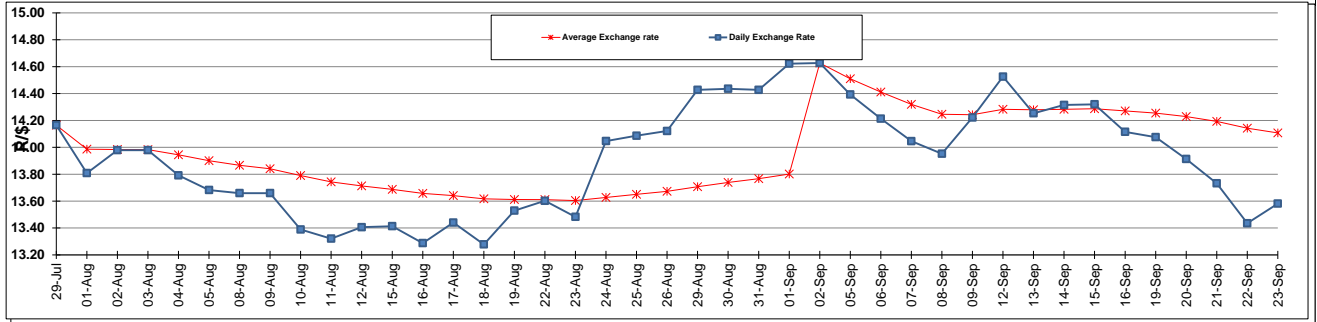
	PETROL 95 ULP	PETROL 93 ULP & LRP	DIESEL 0.05%	DIESEL 0.005%	ILL. PAR.
GAUTENG PUMP PRICE (SA c/l) AS FROM 07/09/2016	1 217.000	1 190.000	-	-	-
WHOLESALE PRICE (SA c/l) AS FROM 07/09/2016	-	-	1 048.870	1 052.270	647.628
SINGLE NATIONAL MAXIMUM RETAIL PRICE	-	-	-	-	828.000
BASIC FUEL PRICE - 23/09/2016 (SA c/l)	527.917	513.027	505.025	507.797	506.282
PRESS RELEASE CONTRIBUTION TO BFP 07/09/2016 - 23/09/2016 (SA c/l)	495.970	478.970	482.630	486.030	486.128
UNIT OVER/(UNDER) RECOVERY (SA c/l) - 23/09/2016	(31.947)	(34.057)	(22.395)	(21.767)	(20.154)
AVERAGE BASIC FUEL PRICE 02/09/2016 - 23/09/2016	545.144	529.553	515.987	518.824	517.631
AVERAGE UNIT OVER/(UNDER) RECOVERY 02/09/2016 - 23/09/2016	(45.799)	(47.208)	(24.357)	(23.607)	(22.691)

ANALYSIS MOVEMENT OF AVERAGE OVER/(UNDER) RECOVERY

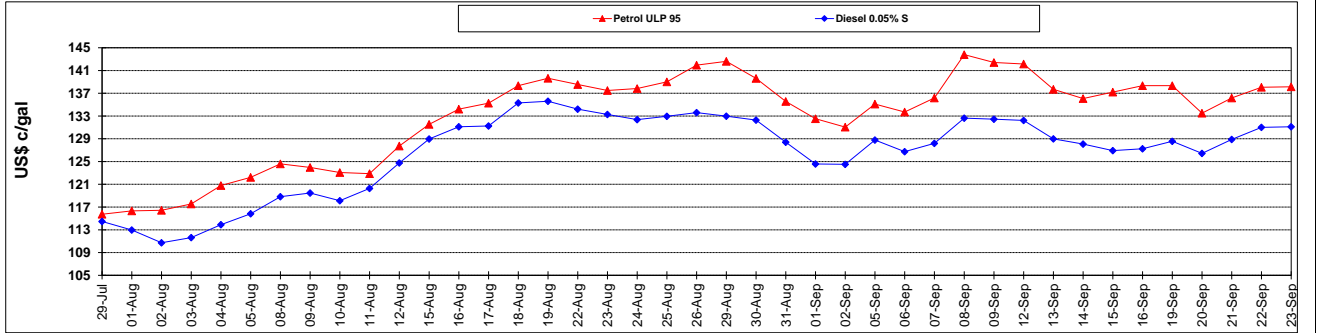
	PETROL 95	PETROL 93	DIESEL 0.05%	DIESEL 0.005%	ILL. PAR.
- MOVEMENT IN INTERNATIONAL PRODUCT PRICES	(33.978)	(35.725)	(13.169)	(12.356)	(11.466)
- MOVEMENT IN EXCHANGE RATE	(11.821)	(11.483)	(11.188)	(11.250)	(11.224)
AVERAGE UNIT OVER/(UNDER) RECOVERY 02/09/2016 - 23/09/2016	(45.799)	(47.208)	(24.357)	(23.607)	(22.691)

R/\$ EXCHANGE RATE - (R/\$ 13.5815 - 23/09/2016)

EXCHANGE RATE USED IN BASIC FUEL PRICE



INTERNATIONAL PRODUCT PRICES OF BASKET USED IN BASIC FUEL PRICE



BASIC FUEL PRICE IN SA CENTS PER LITRE

