

UPDATE OF THE BASIC FUEL PRICE

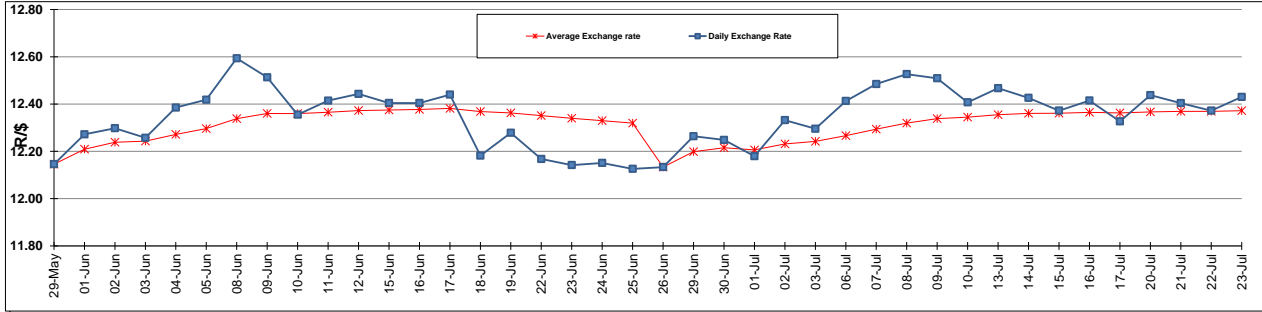
	PETROL 95 ULP	PETROL 93 ULP & LRP	DIESEL 0.05%	DIESEL 0.005%	ILL. PAR.
GAUTENG PUMP PRICE (SA c/l) AS FROM 01/07/2015	1,377.000	1,352.000	-	-	-
WHOLESALE PRICE (SA c/l) AS FROM 01/07/2015	-	-	1,170.790	1,174.190	786.828
SINGLE NATIONAL MAXIMUM RETAIL PRICE	-	-	-	-	1,014.000
BASIC FUEL PRICE - 23/07/2015 (SA c/l)	625.274	604.595	548.198	554.107	542.464
PRESS RELEASE CONTRIBUTION TO BFP 01/07/2015 - 23/07/2015 (SA c/l)	703.650	688.650	642.630	646.030	629.128
UNIT OVER/(UNDER) RECOVERY (SA c/l) - 23/07/2015	78.376	84.055	94.432	91.923	86.664
AVERAGE BASIC FUEL PRICE 26/06/2015 - 23/07/2015	655.550	638.544	574.102	579.707	564.386
AVERAGE UNIT OVER/(UNDER) RECOVERY 26/06/2015 - 23/07/2015	41.950	43.506	67.928	65.723	63.842

ANALYSIS MOVEMENT OF AVERAGE OVER/(UNDER) RECOVERY

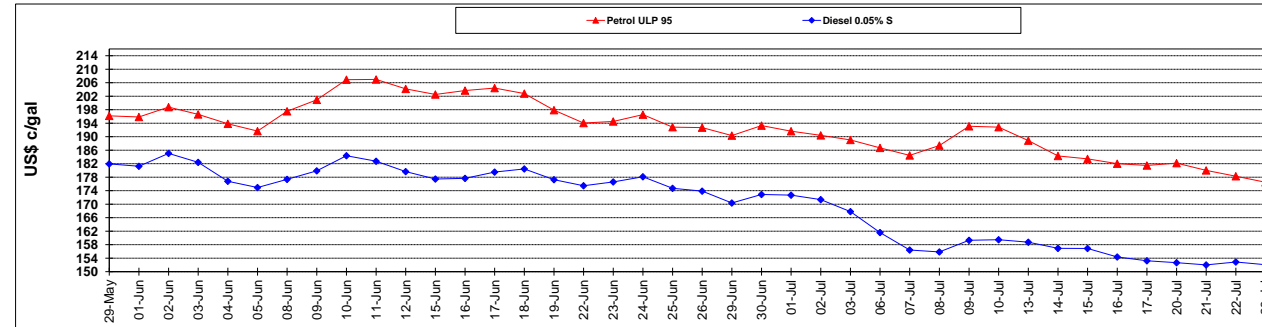
	PETROL 95	PETROL 93	DIESEL 0.05%	DIESEL 0.005%	ILL. PAR.
- MOVEMENT IN INTERNATIONAL PRODUCT PRICES	44.737	46.221	70.369	68.188	66.241
- MOVEMENT IN EXCHANGE RATE	(2.787)	(2.715)	(2.441)	(2.465)	(2.399)
AVERAGE UNIT OVER/(UNDER) RECOVERY 26/06/2015 - 23/07/2015	41.950	43.506	67.928	65.723	63.842

R/\$ EXCHANGE RATE - (R/\$ 12.4302 - 23/07/2015)

EXCHANGE RATE USED IN BASIC FUEL PRICE



INTERNATIONAL PRODUCT PRICES OF BASKET USED IN BASIC FUEL PRICE



BASIC FUEL PRICE IN SA CENTS PER LITRE

