

UPDATE OF THE BASIC FUEL PRICE

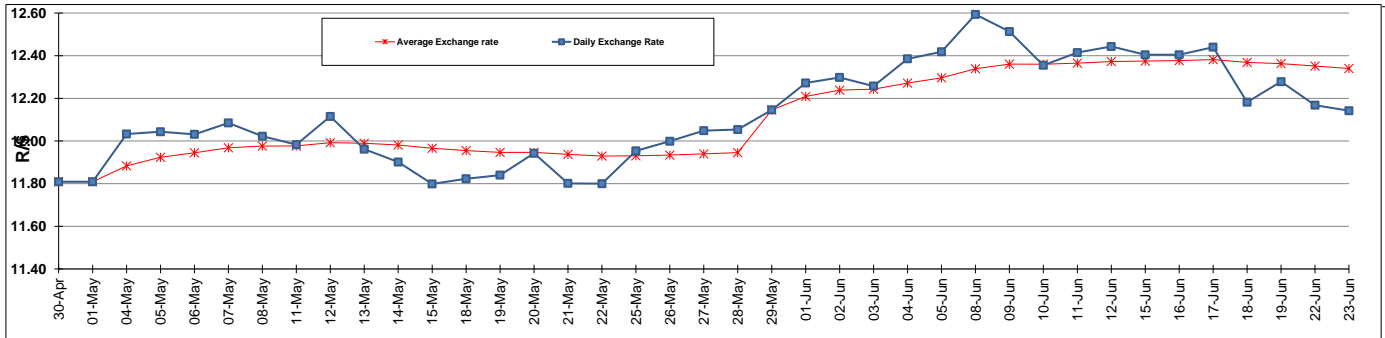
	PETROL 95 ULP	PETROL 93 ULP & LRP	DIESEL 0.05%	DIESEL 0.005%	ILL. PAR.
GAUTENG PUMP PRICE (SA c/l) AS FROM 03/06/2015	1,336.000	1,308.000	-	-	-
WHOLESALE PRICE (SA c/l) AS FROM 03/06/2015	-	-	1,166.790	1,170.190	780.828
SINGLE NATIONAL MAXIMUM RETAIL PRICE	-	-	-	-	1,006.000
BASIC FUEL PRICE - 23/06/2015 (SA c/l)	672.679	657.235	618.805	623.610	610.217
PRESS RELEASE CONTRIBUTION TO BFP 03/06/2015 - 23/06/2015 (SA c/l)	662.650	644.650	638.630	642.030	623.128
UNIT OVER/(UNDER) RECOVERY (SA c/l) - 23/06/2015	(10.029)	(12.585)	19.825	18.420	12.911
AVERAGE BASIC FUEL PRICE 29/05/2015 - 23/06/2015	699.584	684.577	638.256	641.175	623.525
AVERAGE UNIT OVER/(UNDER) RECOVERY 29/05/2015 - 23/06/2015	(44.767)	(47.760)	(7.793)	(6.812)	(7.397)

ANALYSIS MOVEMENT OF AVERAGE OVER/(UNDER) RECOVERY

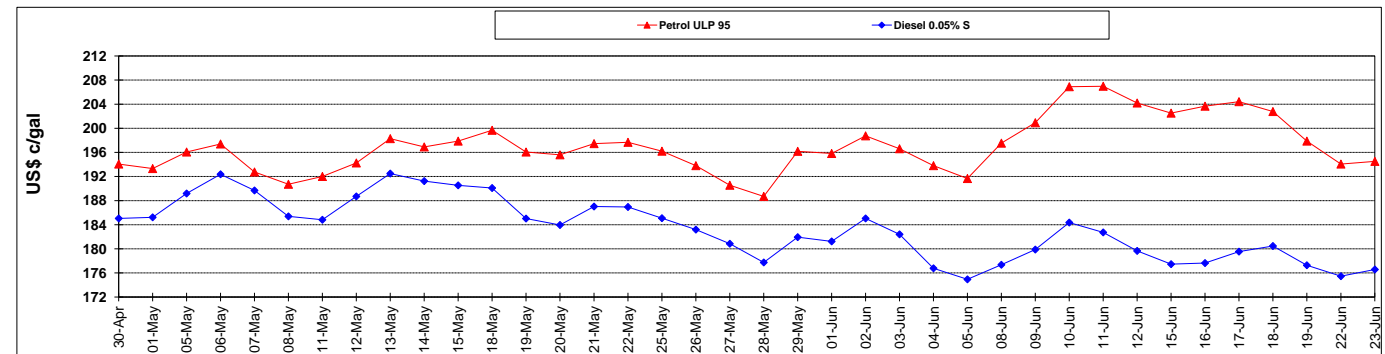
	PETROL 95	PETROL 93	DIESEL 0.05%	DIESEL 0.005%	ILL. PAR.
- MOVEMENT IN INTERNATIONAL PRODUCT PRICES	(22.413)	(25.885)	12.602	13.676	12.527
- MOVEMENT IN EXCHANGE RATE	(22.354)	(21.875)	(20.395)	(20.488)	(19.924)
AVERAGE UNIT OVER/(UNDER) RECOVERY 29/05/2015 - 23/06/2015	(44.767)	(47.760)	(7.793)	(6.812)	(7.397)

R/\$ EXCHANGE RATE - (R/\$ 12.1420 - 23/06/2015)

EXCHANGE RATE USED IN BASIC FUEL PRICE



INTERNATIONAL PRODUCT PRICES OF BASKET USED IN BASIC FUEL PRICE



BASIC FUEL PRICE IN SA CENTS PER LITRE

