

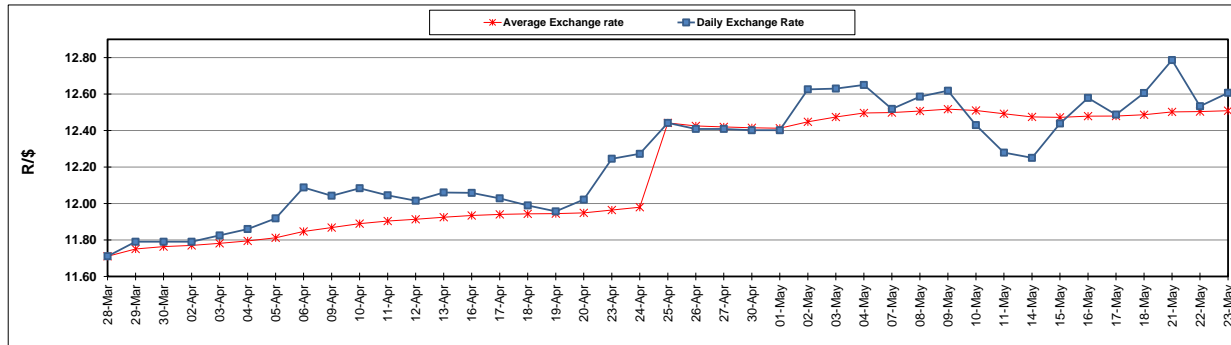
	PETROL 95 ULP	PETROL 93 ULP & LRP	DIESEL 0.05%	DIESEL 0.005%	ILL. PAR.
GAUTENG PUMP PRICE (SA c/l) AS FROM 02/05/2018	1 497.000	1 472.000	-	-	-
WHOLESALE PRICE (SA c/l) AS FROM 02/05/2018	-	-	1 333.830	1 338.230	845.088
SINGLE NATIONAL MAXIMUM RETAIL PRICE	-	-	-	-	1 089.000
BASIC FUEL PRICE - 23/05/2018 (SA c/l)	752.892	741.305	764.677	770.826	768.353
PRESS RELEASE CONTRIBUTION TO BFP 02/05/2018 - 23/05/2018 (SA c/l)	645.070	630.070	660.630	665.030	672.128
UNIT OVER/(UNDER) RECOVERY - 23/05/2018 (SA c/l)	(107.822)	(111.235)	(104.047)	(105.796)	(96.225)
AVERAGE BASIC FUEL PRICE 25/04/2018 - 23/05/2018	716.141	703.309	733.436	739.251	743.364
AVERAGE UNIT OVER/(UNDER) RECOVERY 25/04/2018 - 23/05/2018	(82.738)	(84.906)	(86.854)	(88.031)	(83.617)

### ANALYSIS MOVEMENT OF AVERAGE OVER/(UNDER) RECOVERY

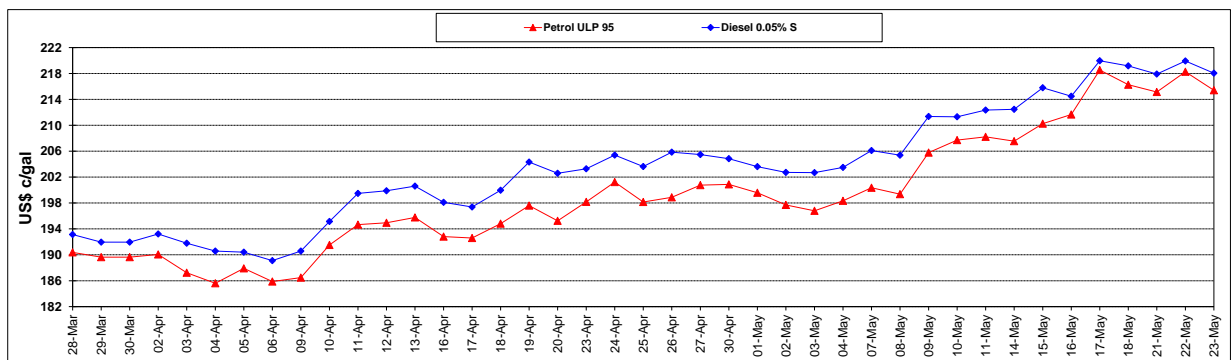
	PETROL 95	PETROL 93	DIESEL 0.05%	DIESEL 0.005%	ILL. PAR.
- MOVEMENT IN INTERNATIONAL PRODUCT PRICES	(52.436)	(55.147)	(55.820)	(56.751)	(52.163)
- MOVEMENT IN EXCHANGE RATE	(30.302)	(29.759)	(31.034)	(31.280)	(31.454)
AVERAGE UNIT OVER/(UNDER) RECOVERY 25/04/2018 - 23/05/2018	(82.738)	(84.906)	(86.854)	(88.031)	(83.617)

### R/\$ EXCHANGE RATE - (R/\$12.6068 - 23/05/2018)

#### EXCHANGE RATE USED IN BASIC FUEL PRICE



#### INTERNATIONAL PRODUCT PRICES OF BASKET USED IN BASIC FUEL PRICE



#### BASIC FUEL PRICE IN SA CENTS PER LITRE

