

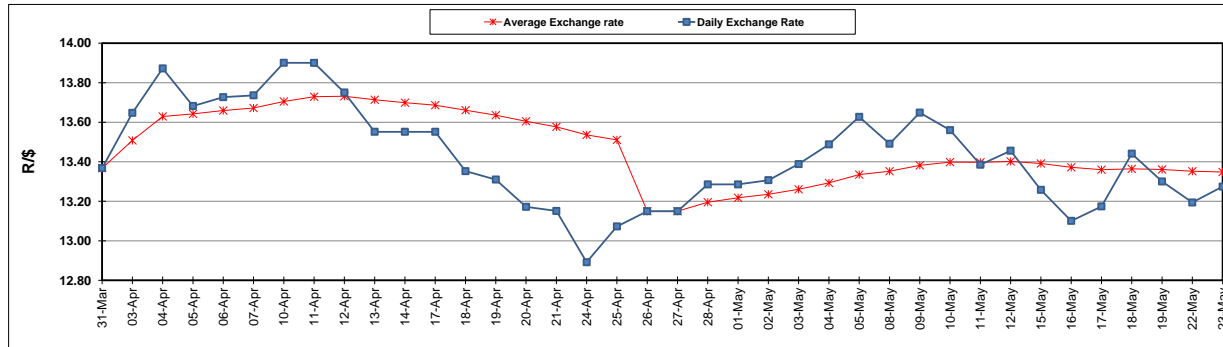
	PETROL 95 ULP	PETROL 93 ULP & LRP	DIESEL 0.05%	DIESEL 0.005%	ILL. PAR.
GAUTENG PUMP PRICE (SA c/l) AS FROM 03/05/2017	1 379.000	1 357.000	-	-	-
WHOLESALE PRICE (SA c/l) AS FROM 03/05/2017	-	-	1 180.330	1 184.730	736.088
SINGLE NATIONAL MAXIMUM RETAIL PRICE	-	-	-	-	947.000
BASIC FUEL PRICE - 23/05/2017 (SA c/l)	586.133	572.038	563.830	567.533	562.455
PRESS RELEASE CONTRIBUTION TO BFP 03/05/2017 - 23/05/2017 (SA c/l)	597.670	585.670	568.630	573.030	565.128
UNIT OVER/(UNDER) RECOVERY (SA c/l) - 23/05/2017	11.537	13.632	4.800	5.497	2.673
AVERAGE BASIC FUEL PRICE 26/04/2017 - 23/05/2017	565.063	549.057	541.959	545.466	536.677
AVERAGE UNIT OVER/(UNDER) RECOVERY 26/04/2017- 23/05/2017	20.357	24.363	19.171	19.565	19.951

ANALYSIS MOVEMENT OF AVERAGE OVER/(UNDER) RECOVERY

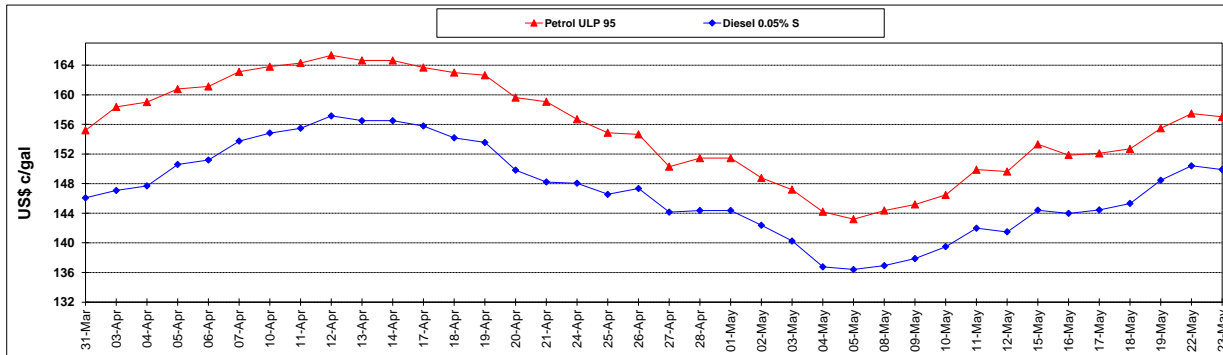
	PETROL 95	PETROL 93	DIESEL 0.05%	DIESEL 0.005%	ILL. PAR.
- MOVEMENT IN INTERNATIONAL PRODUCT PRICES	13.482	17.683	12.577	12.928	13.422
- MOVEMENT IN EXCHANGE RATE	6.875	6.680	6.594	6.636	6.529
AVERAGE UNIT OVER/(UNDER) RECOVERY 26/04/2017 - 23/05/2017	20.357	24.363	19.171	19.565	19.951

R/\$ EXCHANGE RATE - (R/\$ 13.2745 - 23/05/2017)

EXCHANGE RATE USED IN BASIC FUEL PRICE



INTERNATIONAL PRODUCT PRICES OF BASKET USED IN BASIC FUEL PRICE



BASIC FUEL PRICE IN SA CENTS PER LITRE

