

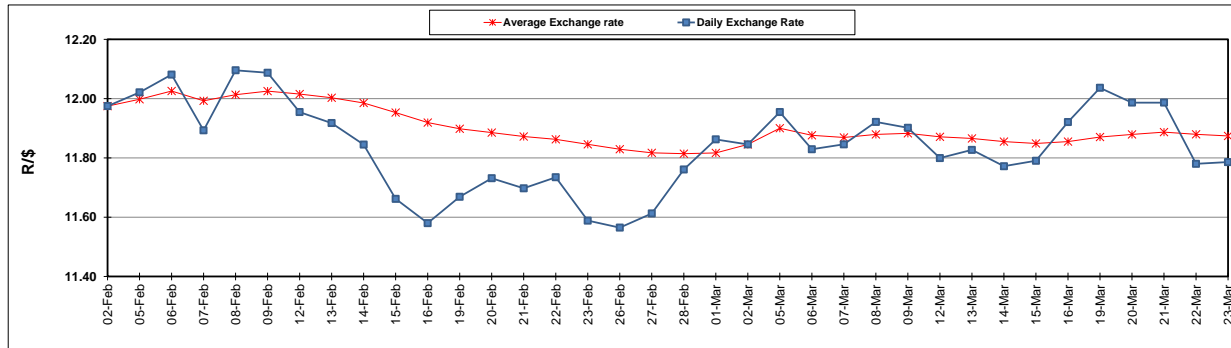
	PETROL 95 ULP	PETROL 93 ULP & LRP	DIESEL 0.05%	DIESEL 0.005%	ILL. PAR.
GAUTENG PUMP PRICE (SA c/l) AS FROM 07/03/2018	1 376.000	1 354.000	-	-	-
WHOLESALE PRICE (SA c/l) AS FROM 07/03/2018	-	-	1 209.630	1 215.030	795.388
SINGLE NATIONAL MAXIMUM RETAIL PRICE	-	-	-	-	1 026.000
BASIC FUEL PRICE - 23/03/2018 (SA c/l)	630.125	613.182	631.682	636.076	639.560
PRESS RELEASE CONTRIBUTION TO BFP 07/03/2018 - 23/03/2018 (SA c/l)	586.170	574.170	598.630	604.030	625.128
UNIT OVER/(UNDER) RECOVERY - 23/03/2018 (SA c/l)	(43.955)	(39.012)	(33.052)	(32.046)	(14.432)
AVERAGE BASIC FUEL PRICE 02/03/2018 - 23/03/2018	600.315	585.893	607.631	612.239	623.073
AVERAGE UNIT OVER/(UNDER) RECOVERY 02/03/2018 - 23/03/2018	(7.395)	(4.973)	(0.188)	0.041	6.367

ANALYSIS MOVEMENT OF AVERAGE OVER/(UNDER) RECOVERY

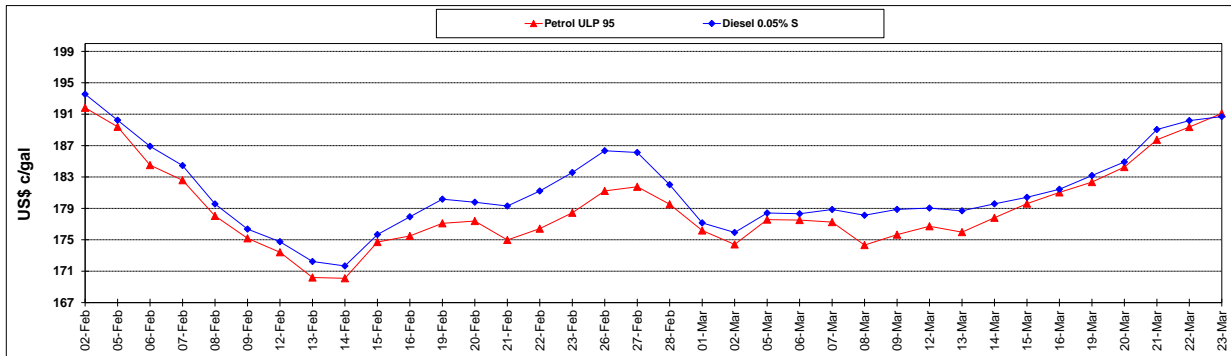
	PETROL 95	PETROL 93	DIESEL 0.05%	DIESEL 0.005%	ILL. PAR.
- MOVEMENT IN INTERNATIONAL PRODUCT PRICES	(4.498)	(2.146)	2.744	2.995	9.375
- MOVEMENT IN EXCHANGE RATE	(2.897)	(2.827)	(2.932)	(2.954)	(3.007)
AVERAGE UNIT OVER/(UNDER) RECOVERY 02/03/2018 - 23/03/2018	(7.395)	(4.973)	(0.188)	0.041	6.367

R/\$ EXCHANGE RATE - (R/\$11.7860 - 23/03/2018)

EXCHANGE RATE USED IN BASIC FUEL PRICE



INTERNATIONAL PRODUCT PRICES OF BASKET USED IN BASIC FUEL PRICE



BASIC FUEL PRICE IN SA CENTS PER LITRE

