

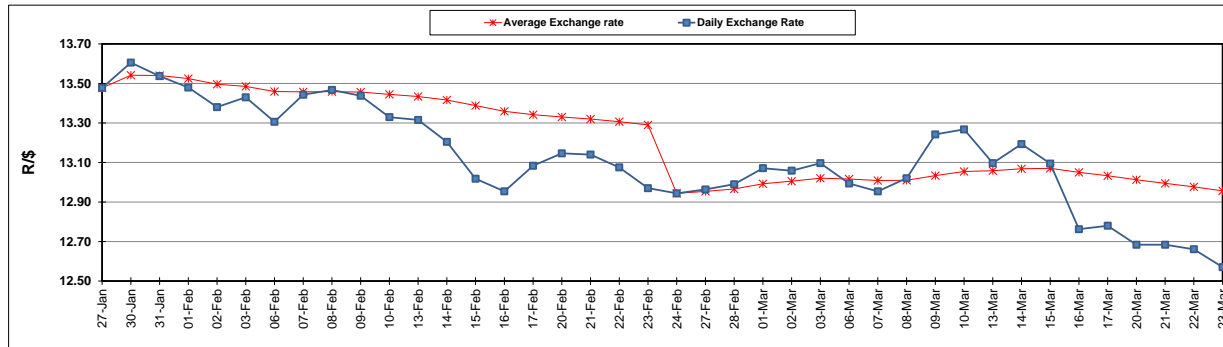
	PETROL 95 ULP	PETROL 93 ULP & LRP	DIESEL 0.05%	DIESEL 0.005%	ILL. PAR.
GAUTENG PUMP PRICE (SA c/l) AS FROM 01/03/2017	1 354.000	1 330.000	-	-	-
WHOLESALE PRICE (SA c/l) AS FROM 01/03/2017	-	-	1 160.830	1 163.230	750.588
SINGLE NATIONAL MAXIMUM RETAIL PRICE	-	-	-	-	966.000
BASIC FUEL PRICE - 23/03/2017 (SA c/l)	526.712	514.253	500.242	503.291	495.423
PRESS RELEASE CONTRIBUTION TO BFP 01/03/2017 - 23/03/2017 (SA c/l)	612.870	598.870	588.630	591.030	583.128
UNIT OVER/(UNDER) RECOVERY (SA c/l) - 23/03/2017	86.158	84.617	88.388	87.739	87.705
AVERAGE BASIC FUEL PRICE 24/02/2017 - 23/03/2017	552.581	540.756	545.127	548.042	537.625
AVERAGE UNIT OVER/(UNDER) RECOVERY 24/02/2017- 23/03/2017	61.489	59.314	43.804	43.288	46.703

ANALYSIS MOVEMENT OF AVERAGE OVER/(UNDER) RECOVERY

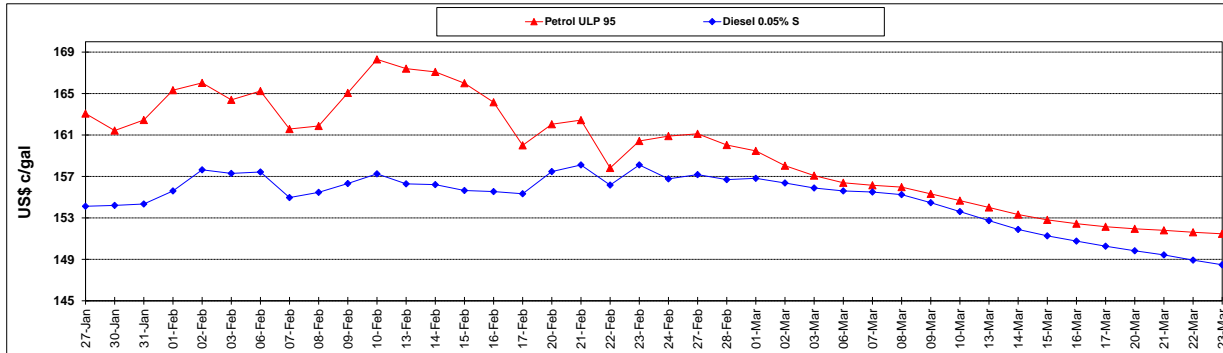
	PETROL 95	PETROL 93	DIESEL 0.05%	DIESEL 0.005%	ILL. PAR.
- MOVEMENT IN INTERNATIONAL PRODUCT PRICES	60.905	58.742	43.227	42.709	46.135
- MOVEMENT IN EXCHANGE RATE	0.584	0.572	0.576	0.579	0.568
AVERAGE UNIT OVER/(UNDER) RECOVERY 24/02/2017 - 23/03/2017	61.489	59.314	43.804	43.288	46.703

R/\$ EXCHANGE RATE - (R/\$ 12.5703 - 23/03/2017)

EXCHANGE RATE USED IN BASIC FUEL PRICE



INTERNATIONAL PRODUCT PRICES OF BASKET USED IN BASIC FUEL PRICE



BASIC FUEL PRICE IN SA CENTS PER LITRE

