

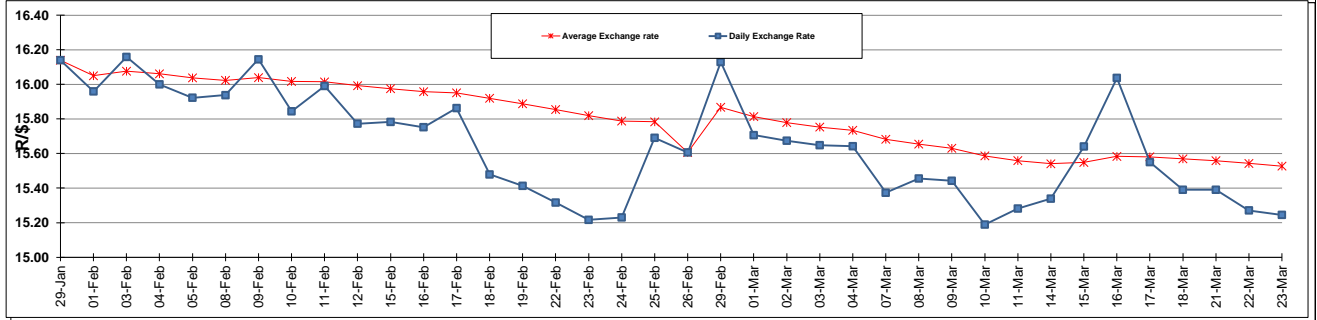
	PETROL 95 ULP	PETROL 93 ULP & LRP	DIESEL 0.05%	DIESEL 0.005%	ILL. PAR.
GAUTENG PUMP PRICE (SA c/l) AS FROM 02/03/2016	1 174.000	1 146.000	-	-	-
WHOLESALE PRICE (SA c/l) AS FROM 02/03/2016	-	-	958.170	961.570	605.028
SINGLE NATIONAL MAXIMUM RETAIL PRICE	-	-	-	-	772.000
BASIC FUEL PRICE - 23/03/2016 (SA c/l)	578.014	559.823	497.266	501.840	509.306
PRESS RELEASE CONTRIBUTION TO BFP 02/03/2016 - 23/03/2016 (SA c/l)	487.970	469.970	427.630	431.030	445.128
UNIT OVER/(UNDER) RECOVERY (SA c/l) - 23/03/2016	(90.044)	(89.853)	(69.636)	(70.810)	(64.178)
AVERAGE BASIC FUEL PRICE 23/03/2016 - 23/03/2016	545.251	523.583	487.470	493.228	498.552
AVERAGE UNIT OVER/(UNDER) RECOVERY 26/02/2016 - 23/03/2016	(46.386)	(42.718)	(62.208)	(64.409)	(56.108)

### ANALYSIS MOVEMENT OF AVERAGE OVER/(UNDER) RECOVERY

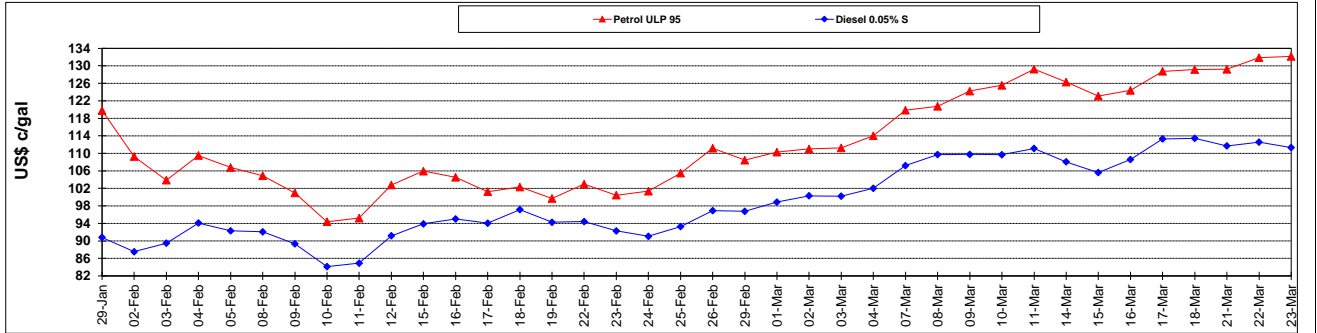
	PETROL 95	PETROL 93	DIESEL 0.05%	DIESEL 0.005%	ILL. PAR.
- MOVEMENT IN INTERNATIONAL PRODUCT PRICES	(55.379)	(51.354)	(70.248)	(72.544)	(64.331)
- MOVEMENT IN EXCHANGE RATE	8.993	8.636	8.040	8.135	8.223
AVERAGE UNIT OVER/(UNDER) RECOVERY 26/02/2016 - 23/03/2016	(46.386)	(42.718)	(62.208)	(64.409)	(56.108)

**R/\$ EXCHANGE RATE - (R/\$ 15.2450 - 23/03/2016)**

### EXCHANGE RATE USED IN BASIC FUEL PRICE



### INTERNATIONAL PRODUCT PRICES OF BASKET USED IN BASIC FUEL PRICE



### BASIC FUEL PRICE IN SA CENTS PER LITRE

