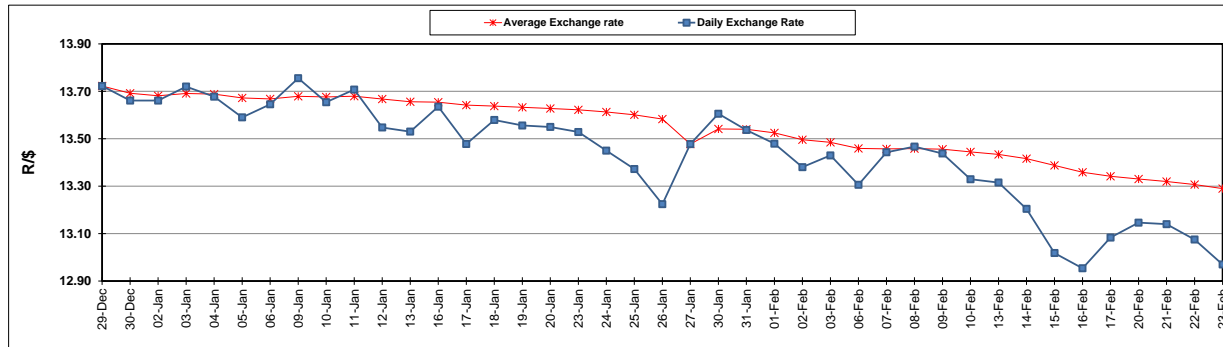


	PETROL 95 ULP	PETROL 93 ULP & LRP	DIESEL 0.05%	DIESEL 0.005%	ILL. PAR.
GAUTENG PUMP PRICE (SA c/l) AS FROM 01/02/2017	1 362.000	1 338.000	-	-	-
WHOLESALE PRICE (SA c/l) AS FROM 01/02/2017	-	-	1 162.830	1 165.230	758.588
SINGLE NATIONAL MAXIMUM RETAIL PRICE	-	-	-	-	976.000
BASIC FUEL PRICE - 23/02/2017 (SA c/l)	584.434	575.680	579.261	582.119	573.396
PRESS RELEASE CONTRIBUTION TO BFP 01/02/2017 - 23/02/2017 (SA c/l)	620.870	606.870	590.630	593.030	591.128
UNIT OVER/(UNDER) RECOVERY (SA c/l) - 23/02/2017	36.436	31.190	11.369	10.911	17.732
AVERAGE BASIC FUEL PRICE 27/01/2017 - 23/02/2017	609.311	595.666	585.838	588.253	580.215
AVERAGE UNIT OVER/(UNDER) RECOVERY 27/01/2017- 23/02/2017	7.209	6.854	1.642	1.627	8.364

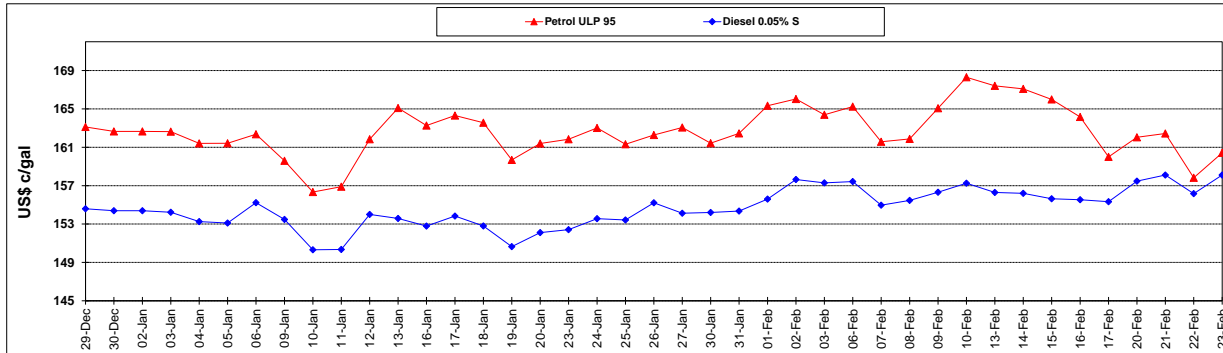
ANALYSIS MOVEMENT OF AVERAGE OVER/(UNDER) RECOVERY					
	PETROL 95	PETROL 93	DIESEL 0.05%	DIESEL 0.005%	ILL. PAR.
- MOVEMENT IN INTERNATIONAL PRODUCT PRICES	(6.234)	(6.288)	(11.283)	(11.351)	(4.438)
- MOVEMENT IN EXCHANGE RATE	13.443	13.142	12.925	12.978	12.801
AVERAGE UNIT OVER/(UNDER) RECOVERY 27/01/2017 - 23/02/2017	7.209	6.854	1.642	1.627	8.363

R/\$ EXCHANGE RATE - (R/\$ 12.9700- 23/02/2017)

EXCHANGE RATE USED IN BASIC FUEL PRICE



INTERNATIONAL PRODUCT PRICES OF BASKET USED IN BASIC FUEL PRICE



BASIC FUEL PRICE IN SA CENTS PER LITRE

