

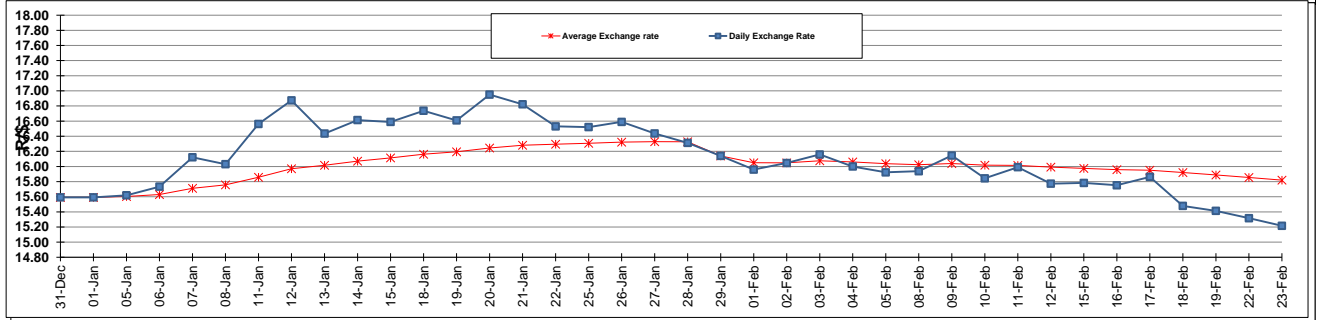
| | PETROL 95 ULP | PETROL 93 ULP & LRP | DIESEL 0.05% | DIESEL 0.005% | ILL. PAR. |
|--|------------------|------------------------|-----------------|------------------|-----------|
| GAUTENG PUMP PRICE (SA c/l) AS FROM 03/02/2016 | 1 243.000 | 1 215.000 | - | - | - |
| WHOLESALE PRICE (SA c/l) AS FROM 03/02/2016 | - | - | 943.170 | 947.570 | 588.028 |
| SINGLE NATIONAL MAXIMUM RETAIL PRICE | - | - | - | - | 749.000 |
| BASIC FUEL PRICE - 23/02/2016 (SA c/l) | 454.144 | 434.839 | 425.030 | 428.059 | 439.832 |
| PRESS RELEASE CONTRIBUTION TO BFP 03/02/2016 - 23/02/2016 (SA c/l) | 556.970 | 538.970 | 412.630 | 417.030 | 428.128 |
| UNIT OVER/(UNDER) RECOVERY (SA c/l) - 23/02/2016 | 102.826 | 104.131 | (12.400) | (11.029) | (11.704) |
| AVERAGE BASIC FUEL PRICE 29/01/2016 - 23/02/2016 | 489.018 | 468.625 | 437.815 | 441.697 | 453.984 |
| AVERAGE UNIT OVER/(UNDER) RECOVERY 29/01/2016 - 23/02/2016 | 66.953 | 69.345 | (14.851) | (14.167) | (16.023) |

ANALYSIS MOVEMENT OF AVERAGE OVER/(UNDER) RECOVERY

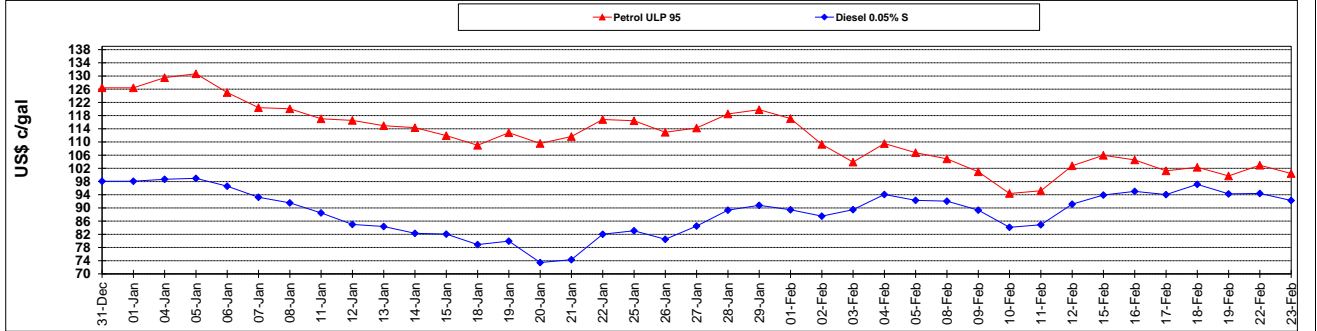
| | PETROL 95 | PETROL 93 | DIESEL 0.05% | DIESEL 0.005% | ILL. PAR. |
|--|-----------|-----------|--------------|---------------|-----------|
| - MOVEMENT IN INTERNATIONAL PRODUCT PRICES | 51.229 | 54.278 | (28.928) | (28.368) | (30.619) |
| - MOVEMENT IN EXCHANGE RATE | 15.723 | 15.067 | 14.076 | 14.201 | 14.596 |
| AVERAGE UNIT OVER/(UNDER) RECOVERY 29/01/2016 - 23/02/2016 | 66.953 | 69.345 | (14.851) | (14.167) | (16.023) |

R/\$ EXCHANGE RATE - (R/\$ 15.2164 - 23/02/2016)

EXCHANGE RATE USED IN BASIC FUEL PRICE



INTERNATIONAL PRODUCT PRICES OF BASKET USED IN BASIC FUEL PRICE



BASIC FUEL PRICE IN SA CENTS PER LITRE

