

## UPDATE OF THE BASIC FUEL PRICE

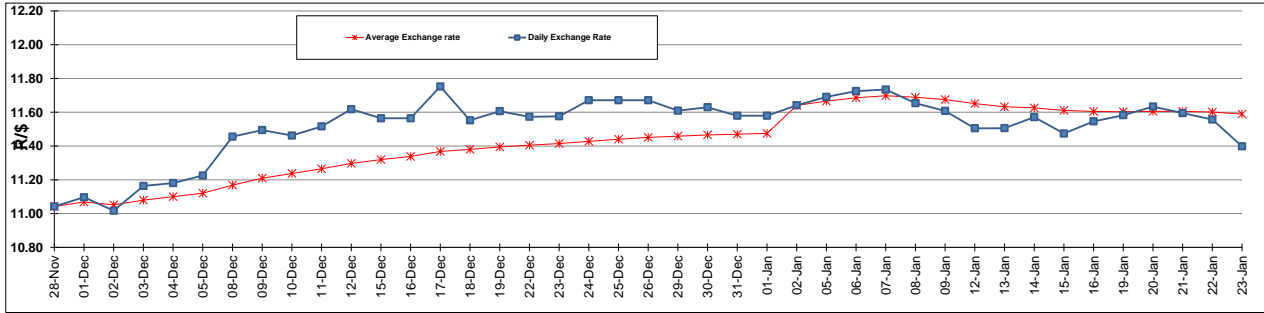
	PETROL 95 ULP	PETROL 93 ULP & LRP	DIESEL 0.05%	DIESEL 0.005%	ILL. PAR.
GAUTENG PUMP PRICE (SA c/l) AS FROM 07/01/2015	1,124.000	1,102.000	-	-	-
WHOLESALE PRICE (SA c/l) AS FROM 07/01/2015	-	-	1,028.090	1,032.490	747.928
SINGLE NATIONAL MAXIMUM RETAIL PRICE	-	-	-	-	969.000
BASIC FUEL PRICE - 23/01/2015 (SA c/l)	455.085	440.876	487.822	492.977	499.396
PRESS RELEASE CONTRIBUTION TO BFP 07/01/2015 - 23/01/2015 (SA c/l)	533.250	521.250	582.630	587.030	593.128
UNIT OVER/(UNDER) RECOVERY (SA c/l) - 23/01/2015	78.165	80.374	94.808	94.053	93.732
AVERAGE BASIC FUEL PRICE 02/01/2015 - 23/01/2015	460.533	447.456	499.841	504.019	508.341
AVERAGE UNIT OVER/(UNDER) RECOVERY 02/01/2015 - 23/01/2015	95.779	97.607	102.289	102.698	105.037

### ANALYSIS MOVEMENT OF AVERAGE OVER/(UNDER) RECOVERY

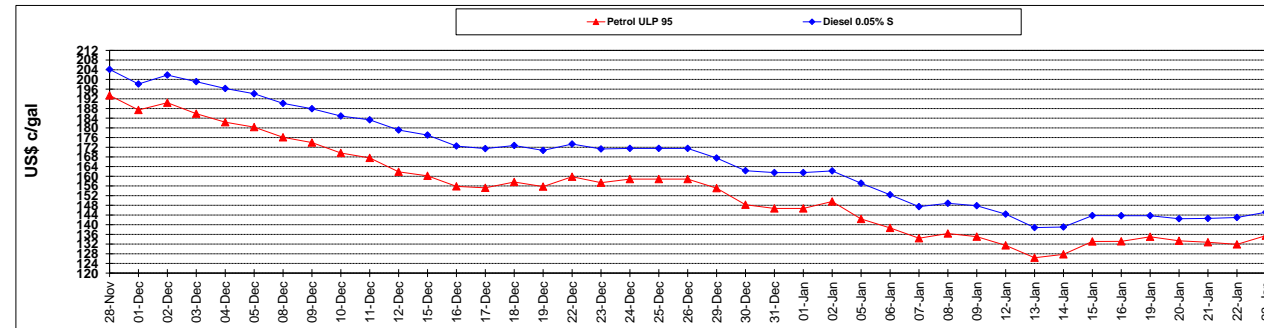
	PETROL 95	PETROL 93	DIESEL 0.05%	DIESEL 0.005%	ILL. PAR.
- MOVEMENT IN INTERNATIONAL PRODUCT PRICES	100.306	102.005	107.202	107.653	110.033
- MOVEMENT IN EXCHANGE RATE	(4.526)	(4.398)	(4.913)	(4.954)	(4.996)
AVERAGE UNIT OVER/(UNDER) RECOVERY 02/01/2015 - 23/01/2015	95.779	97.607	102.289	102.698	105.037

**R/\$ EXCHANGE RATE - (R/\$ 11.3981 - 23/01/2015)**

### EXCHANGE RATE USED IN BASIC FUEL PRICE



### INTERNATIONAL PRODUCT PRICES OF BASKET USED IN BASIC FUEL PRICE



### BASIC FUEL PRICE IN SA CENTS PER LITRE

