

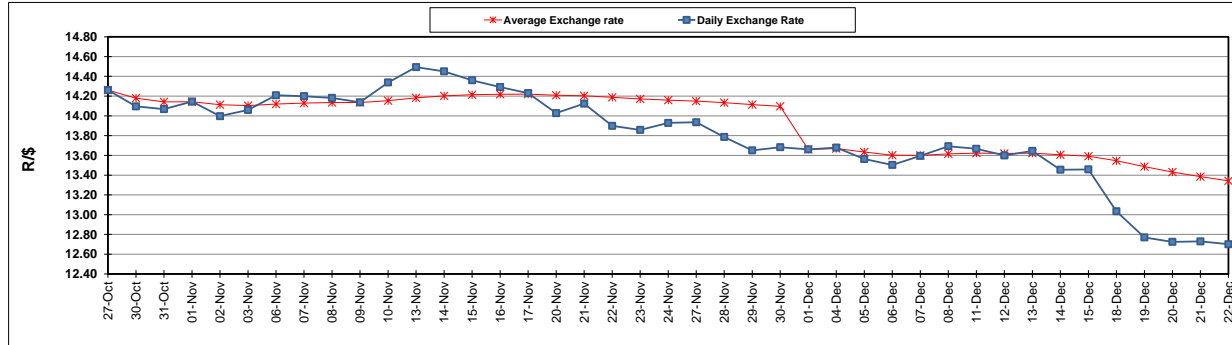
	PETROL 95 ULP	PETROL 93 ULP & LRP	DIESEL 0.05%	DIESEL 0.005%	ILL. PAR.
GAUTENG PUMP PRICE (SA c/l) AS FROM 07/12/2017	1 476.000	1 449.000	-	-	-
WHOLESALE PRICE (SA c/l) AS FROM 07/12/2017	-	-	1 295.630	1 302.030	865.388
SINGLE NATIONAL MAXIMUM RETAIL PRICE	-	-	-	-	1 119.000
BASIC FUEL PRICE - 22/12/2017 (SA c/l)	622.387	611.366	635.951	638.184	637.532
PRESS RELEASE CONTRIBUTION TO BFP 05/12/2017 - 22/12/2017 (SA c/l)	686.170	669.170	684.630	691.030	695.128
UNIT OVER/(UNDER) RECOVERY - 22/12/2017 (SA c/l)	63.783	57.804	48.679	52.846	57.596
AVERAGE BASIC FUEL PRICE 01/12/2017 - 22/12/2017	645.701	633.669	655.660	658.996	657.967
AVERAGE UNIT OVER/(UNDER) RECOVERY 01/12/2017 - 22/12/2017	27.887	22.920	17.532	21.159	23.286

### ANALYSIS MOVEMENT OF AVERAGE OVER/(UNDER) RECOVERY

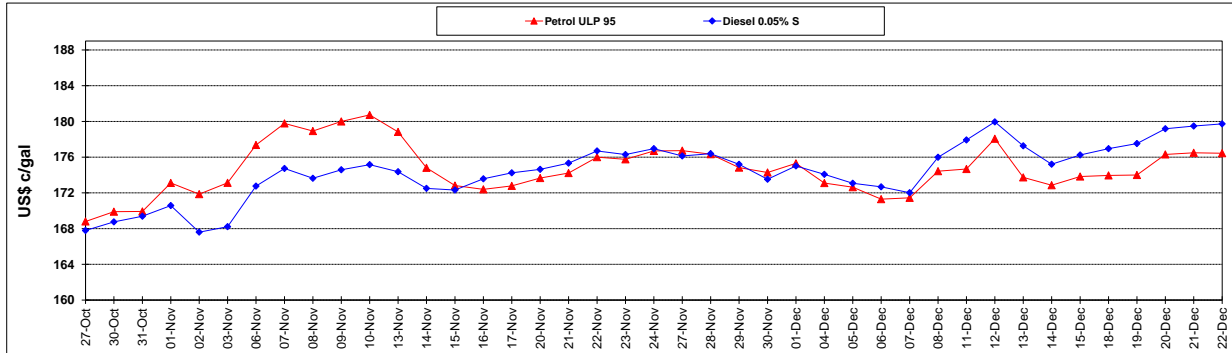
	PETROL 95	PETROL 93	DIESEL 0.05%	DIESEL 0.005%	ILL. PAR.
- MOVEMENT IN INTERNATIONAL PRODUCT PRICES	(8.602)	(12.890)	(19.519)	(16.082)	(13.897)
- MOVEMENT IN EXCHANGE RATE	36.490	35.810	37.052	37.241	37.183
AVERAGE UNIT OVER/(UNDER) RECOVERY 01/12/2017 - 22/12/2017	27.887	22.920	17.532	21.159	23.286

### R/\$ EXCHANGE RATE - (R/\$ 12.7013 - 22/12/2017)

#### EXCHANGE RATE USED IN BASIC FUEL PRICE



#### INTERNATIONAL PRODUCT PRICES OF BASKET USED IN BASIC FUEL PRICE



#### BASIC FUEL PRICE IN SA CENTS PER LITRE

