

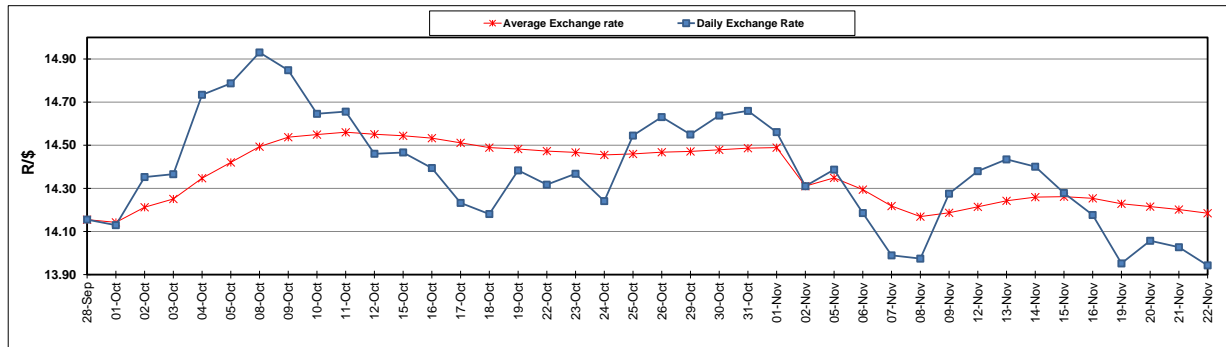
	PETROL 95 ULP	PETROL 93 ULP & LRP	DIESEL 0.05%	DIESEL 0.005%	ILL. PAR.
GAUTENG PUMP PRICE (SA c/l) AS FROM 07/11/2018	1 708.000	1 685.000	-	-	-
WHOLESALE PRICE (SA c/l) AS FROM 07/11/2018	-	-	1 612.750	1 620.150	1 085.088
SINGLE NATIONAL MAXIMUM RETAIL PRICE	-	-	-	-	1 409.000
BASIC FUEL PRICE - 22/11/2018 (SA c/l)	606.979	593.755	714.747	719.082	726.723
PRESS RELEASE CONTRIBUTION TO BFP 07/11/2018 - 22/11/2018 (SA c/l)	829.250	816.250	917.630	925.030	912.128
UNIT OVER/(UNDER) RECOVERY - 22/11/2018 (SA c/l)	222.271	222.495	202.883	205.948	185.405
AVERAGE BASIC FUEL PRICE 02/11/2018 - 22/11/2018	662.338	652.090	791.776	797.789	795.674
AVERAGE UNIT OVER/(UNDER) RECOVERY 02/11/2018 - 22/11/2018	171.296	168.544	120.654	121.441	110.854

### ANALYSIS MOVEMENT OF AVERAGE OVER/(UNDER) RECOVERY

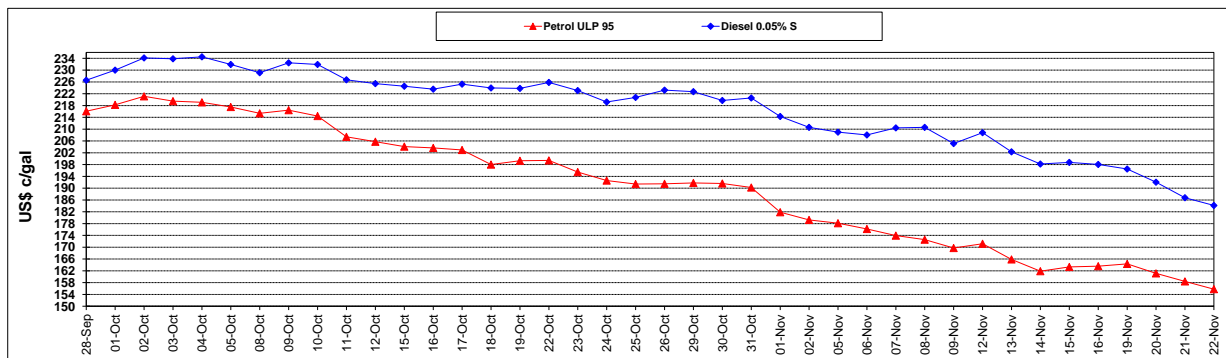
	PETROL 95	PETROL 93	DIESEL 0.05%	DIESEL 0.005%	ILL. PAR.
- MOVEMENT IN INTERNATIONAL PRODUCT PRICES	157.078	154.546	103.657	104.315	93.773
- MOVEMENT IN EXCHANGE RATE	14.218	13.998	16.997	17.126	17.081
AVERAGE UNIT OVER/(UNDER) RECOVERY 02/11/2018 - 22/11/2018	171.296	168.544	120.654	121.441	110.854

### R/\$ EXCHANGE RATE - (R/\$13.9425 - 22/11/2018)

#### EXCHANGE RATE USED IN BASIC FUEL PRICE



#### INTERNATIONAL PRODUCT PRICES OF BASKET USED IN BASIC FUEL PRICE



#### BASIC FUEL PRICE IN SA CENTS PER LITRE

