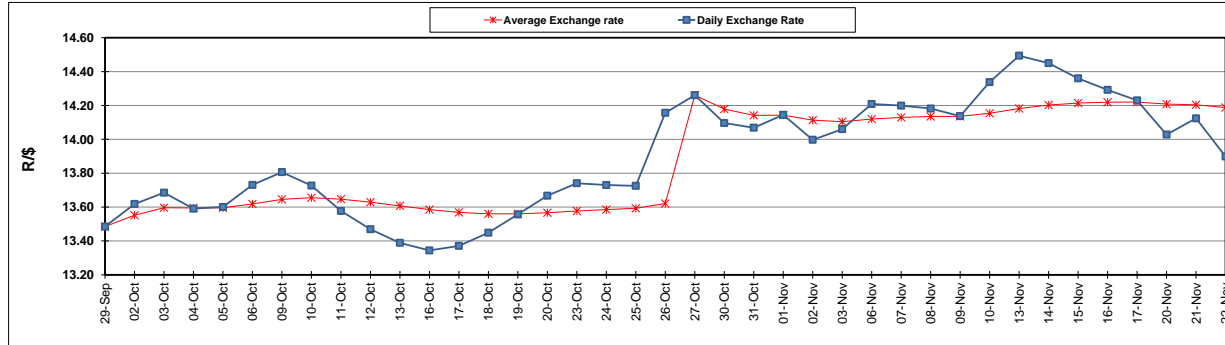


	PETROL 95 ULP	PETROL 93 ULP & LRP	DIESEL 0.05%	DIESEL 0.005%	ILL. PAR.
GAUTENG PUMP PRICE (SA c/l) AS FROM 01/11/2017	1 405.000	1 378.000	-	-	-
WHOLESALE PRICE (SA c/l) AS FROM 01/11/2017	-	-	1 235.330	1 244.730	792.088
SINGLE NATIONAL MAXIMUM RETAIL PRICE	-	-	-	-	1 021.000
BASIC FUEL PRICE -22/11/2017 (SA c/l)	681.046	665.644	686.509	691.114	695.851
PRESS RELEASE CONTRIBUTION TO BFP 01/11/2017 - 22/11/2017 (SA c/l)	619.070	602.070	623.630	633.030	621.128
UNIT OVER/(UNDER) RECOVERY (SA c/l) - 22/11/2017	(61.976)	(63.574)	(62.879)	(58.084)	(74.723)
AVERAGE BASIC FUEL PRICE 27/10/2017 - 22/11/2017	689.586	673.901	684.071	690.258	693.692
AVERAGE UNIT OVER/(UNDER) RECOVERY 27/10/2017 - 22/11/2017	(71.148)	(72.462)	(64.073)	(61.492)	(75.880)

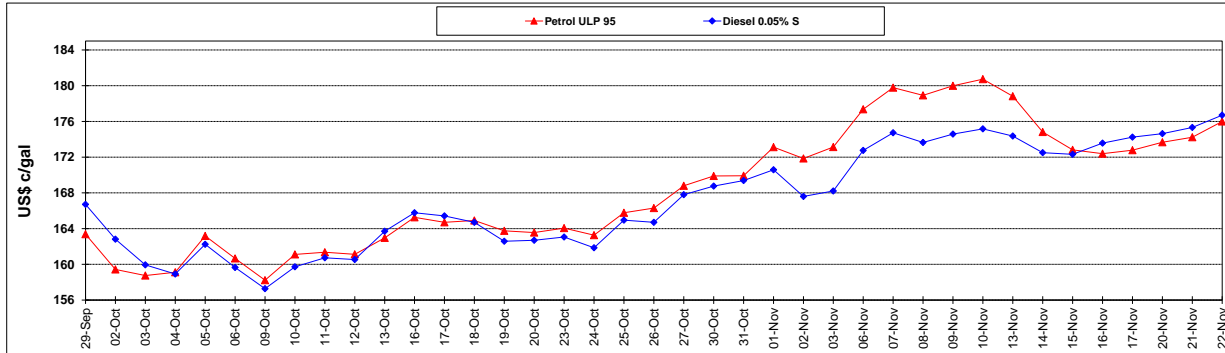
ANALYSIS MOVEMENT OF AVERAGE OVER/(UNDER) RECOVERY					
	PETROL 95	PETROL 93	DIESEL 0.05%	DIESEL 0.005%	ILL. PAR.
- MOVEMENT IN INTERNATIONAL PRODUCT PRICES	(43.599)	(45.541)	(36.744)	(33.915)	(48.167)
- MOVEMENT IN EXCHANGE RATE	(27.549)	(26.922)	(27.329)	(27.576)	(27.713)
AVERAGE UNIT OVER/(UNDER) RECOVERY 27/10/2017 - 22/11/2017	(71.148)	(72.462)	(64.073)	(61.492)	(75.880)

R/\$ EXCHANGE RATE - (R/\$ 13.8990 22/11/2017)

EXCHANGE RATE USED IN BASIC FUEL PRICE



INTERNATIONAL PRODUCT PRICES OF BASKET USED IN BASIC FUEL PRICE



BASIC FUEL PRICE IN SA CENTS PER LITRE

