

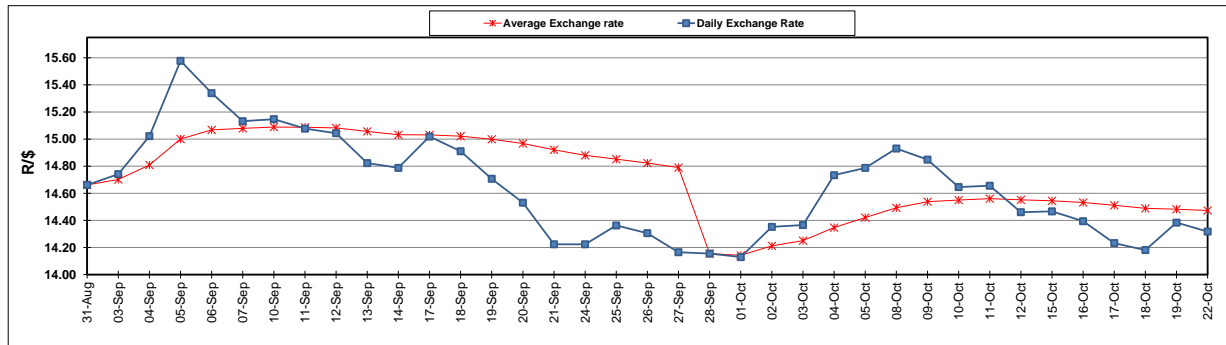
	PETROL 95 ULP	PETROL 93 ULP & LRP	DIESEL 0.05%	DIESEL 0.005%	ILL. PAR.
GAUTENG PUMP PRICE (SA c/l) AS FROM 03/10/2018	1 708.000	1 685.000	-	-	-
WHOLESALE PRICE (SA c/l) AS FROM 03/10/2018	-	-	1 564.830	1 569.230	1 057.088
SINGLE NATIONAL MAXIMUM RETAIL PRICE	-	-	-	-	1 372.000
BASIC FUEL PRICE - 22/10/2018 (SA c/l)	788.316	777.284	891.757	897.035	889.081
PRESS RELEASE CONTRIBUTION TO BFP 03/10/2018 - 22/10/2018 (SA c/l)	851.170	838.170	891.630	896.030	884.128
UNIT OVER/(UNDER) RECOVERY - 22/10/2018 (SA c/l)	62.854	60.886	(0.127)	(1.005)	(4.953)
AVERAGE BASIC FUEL PRICE 28/09/2018 - 22/10/2018	839.636	826.546	911.564	918.649	908.809
AVERAGE UNIT OVER/(UNDER) RECOVERY 28/09/2018 - 22/10/2018	(6.113)	(5.846)	(41.816)	(44.501)	(43.034)

ANALYSIS MOVEMENT OF AVERAGE OVER/(UNDER) RECOVERY

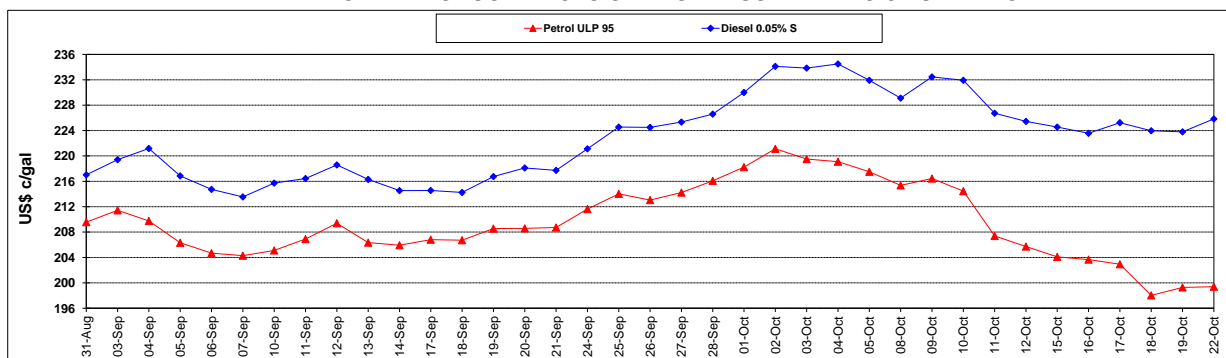
	PETROL 95	PETROL 93	DIESEL 0.05%	DIESEL 0.005%	ILL. PAR.
- MOVEMENT IN INTERNATIONAL PRODUCT PRICES	(24.504)	(23.951)	(61.782)	(64.622)	(62.940)
- MOVEMENT IN EXCHANGE RATE	18.391	18.104	19.966	20.121	19.906
AVERAGE UNIT OVER/(UNDER) RECOVERY 28/09/2018 - 22/10/2018	(6.113)	(5.846)	(41.816)	(44.501)	(43.034)

R/\$ EXCHANGE RATE - (R/\$14.3173 - 22/10/2018)

EXCHANGE RATE USED IN BASIC FUEL PRICE



INTERNATIONAL PRODUCT PRICES OF BASKET USED IN BASIC FUEL PRICE



BASIC FUEL PRICE IN SA CENTS PER LITRE

