

UPDATE OF THE BASIC FUEL PRICE

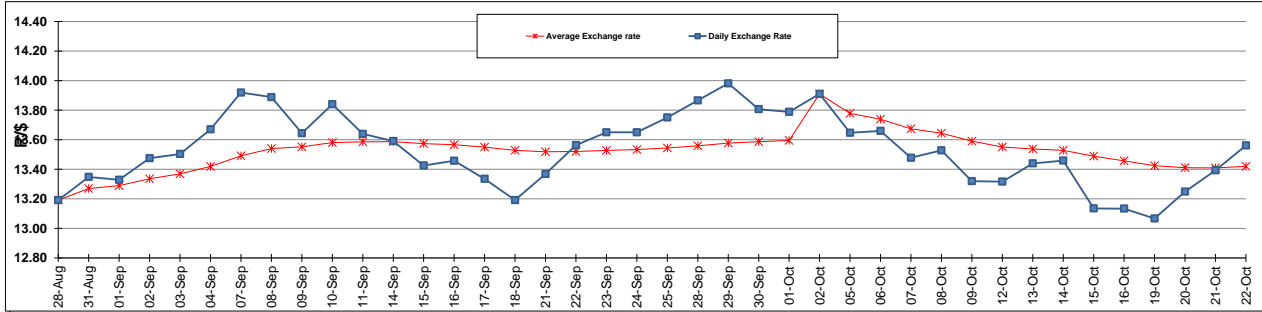
	PETROL 95 ULP	PETROL 93 ULP & LRP	DIESEL 0.05%	DIESEL 0.005%	ILL. PAR.
GAUTENG PUMP PRICE (SA c/l) AS FROM 07/10/2015	1,261.000	1,230.000	-	-	-
WHOLESALE PRICE (SA c/l) AS FROM 07/10/2015	-	-	1,093.970	1,100.370	711.828
SINGLE NATIONAL MAXIMUM RETAIL PRICE	-	-	-	-	914.000
BASIC FUEL PRICE - 22/10/2015 (SA c/l)	547.188	529.811	541.072	546.959	537.023
PRESS RELEASE CONTRIBUTION TO BFP 07/10/2015 - 22/10/2015 (SA c/l)	582.870	561.870	565.630	572.030	554.128
UNIT OVER/(UNDER) RECOVERY (SA c/l) - 22/10/2015	35.682	32.059	24.558	25.071	17.105
AVERAGE BASIC FUEL PRICE 02/10/2015 - 22/10/2015	563.650	547.790	551.158	556.765	544.804
AVERAGE UNIT OVER/(UNDER) RECOVERY 02/10/2015 - 22/10/2015	18.420	14.480	3.872	5.065	(0.676)

ANALYSIS MOVEMENT OF AVERAGE OVER/(UNDER) RECOVERY

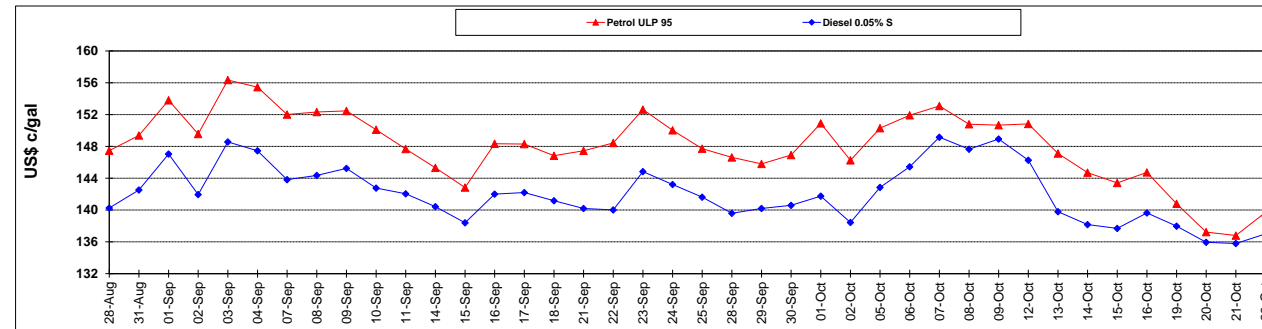
	PETROL 95	PETROL 93	DIESEL 0.05%	DIESEL 0.005%	ILL. PAR.
- MOVEMENT IN INTERNATIONAL PRODUCT PRICES	11.061	7.328	(3.324)	(2.204)	(7.789)
- MOVEMENT IN EXCHANGE RATE	7.359	7.152	7.196	7.269	7.113
AVERAGE UNIT OVER/(UNDER) RECOVERY 02/10/2015 - 22/10/2015	18.420	14.480	3.872	5.065	(0.676)

R/\$ EXCHANGE RATE - (R/\$ 13.5616 - 22/10/2015)

EXCHANGE RATE USED IN BASIC FUEL PRICE



INTERNATIONAL PRODUCT PRICES OF BASKET USED IN BASIC FUEL PRICE



BASIC FUEL PRICE IN SA CENTS PER LITRE

