

## UPDATE OF THE BASIC FUEL PRICE

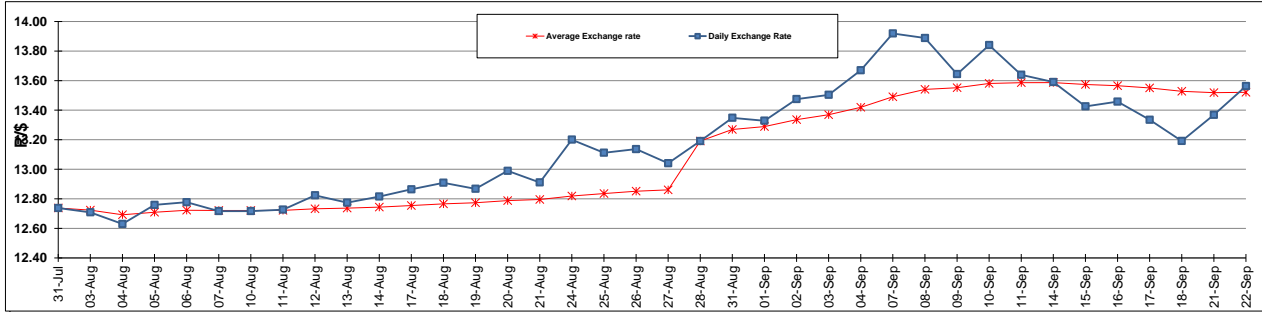
	PETROL 95 ULP	PETROL 93 ULP & LRP	DIESEL 0.05%	DIESEL 0.005%	ILL. PAR.
GAUTENG PUMP PRICE (SA c/l) AS FROM 02/09/2015	1,257.000	1,232.000	-	-	-
WHOLESALE PRICE (SA c/l) AS FROM 02/09/2015	-	-	1,040.970	1,049.370	661.828
SINGLE NATIONAL MAXIMUM RETAIL PRICE	-	-	-	-	847.000
BASIC FUEL PRICE - 22/09/2015 (SA c/l)	588.270	570.715	562.422	568.873	551.215
PRESS RELEASE CONTRIBUTION TO BFP 02/09/2015 - 22/09/2015 (SA c/l)	578.870	563.870	512.630	521.030	504.128
UNIT OVER/(UNDER) RECOVERY (SA c/l) - 22/09/2015	(9.400)	(6.845)	(49.792)	(47.843)	(47.087)
AVERAGE BASIC FUEL PRICE 28/08/2015 - 22/09/2015	590.831	569.088	570.593	577.255	559.598
AVERAGE UNIT OVER/(UNDER) RECOVERY 28/08/2015 - 22/09/2015	0.306	7.048	(48.963)	(47.725)	(46.303)

## ANALYSIS MOVEMENT OF AVERAGE OVER/(UNDER) RECOVERY

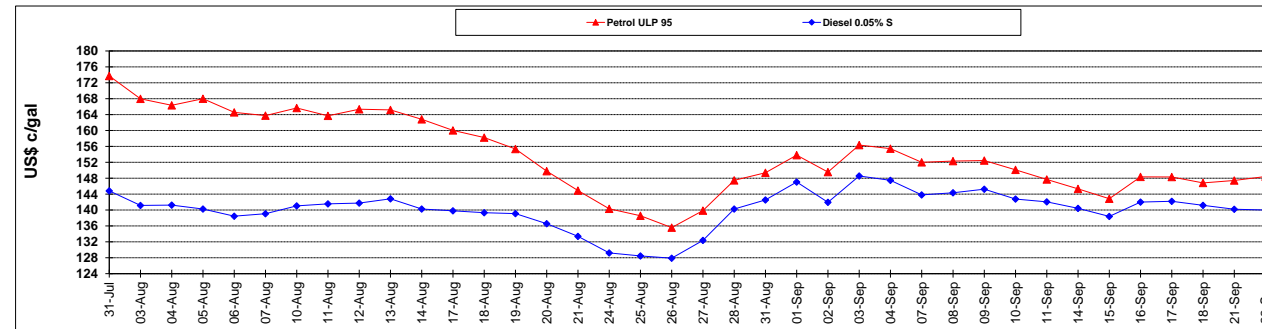
	PETROL 95	PETROL 93	DIESEL 0.05%	DIESEL 0.005%	ILL. PAR.
- MOVEMENT IN INTERNATIONAL PRODUCT PRICES	29.151	34.832	(21.106)	(19.543)	(18.983)
- MOVEMENT IN EXCHANGE RATE	(28.845)	(27.783)	(27.857)	(28.182)	(27.320)
AVERAGE UNIT OVER/(UNDER) RECOVERY 28/08/2015 - 22/09/2015	0.306	7.048	(48.963)	(47.725)	(46.303)

**R/\$ EXCHANGE RATE - (R/\$ 13.5629 - 22/09/2015)**

## EXCHANGE RATE USED IN BASIC FUEL PRICE



## INTERNATIONAL PRODUCT PRICES OF BASKET USED IN BASIC FUEL PRICE



## BASIC FUEL PRICE IN SA CENTS PER LITRE

