

UPDATE OF THE BASIC FUEL PRICE

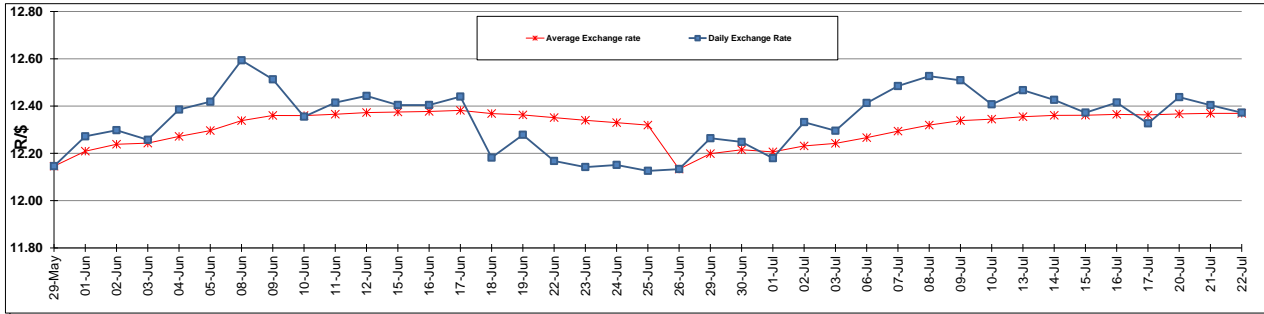
	PETROL 95 ULP	PETROL 93 ULP & LRP	DIESEL 0.05%	DIESEL 0.005%	ILL. PAR.
GAUTENG PUMP PRICE (SA c/l) AS FROM 01/07/2015	1,377.000	1,352.000	-	-	-
WHOLESALE PRICE (SA c/l) AS FROM 01/07/2015	-	-	1,170.790	1,174.190	786.828
SINGLE NATIONAL MAXIMUM RETAIL PRICE	-	-	-	-	1,014.000
BASIC FUEL PRICE - 22/07/2015 (SA c/l)	628.299	607.715	548.385	553.693	539.817
PRESS RELEASE CONTRIBUTION TO BFP 01/07/2015 - 22/07/2015 (SA c/l)	703.650	688.650	642.630	646.030	629.128
UNIT OVER/(UNDER) RECOVERY (SA c/l) - 22/07/2015	75.351	80.935	94.245	92.337	89.311
AVERAGE BASIC FUEL PRICE 26/06/2015 - 22/07/2015	657.144	640.331	575.465	581.055	565.540
AVERAGE UNIT OVER/(UNDER) RECOVERY 26/06/2015 - 22/07/2015	40.032	41.372	66.533	64.344	62.641

ANALYSIS MOVEMENT OF AVERAGE OVER/(UNDER) RECOVERY

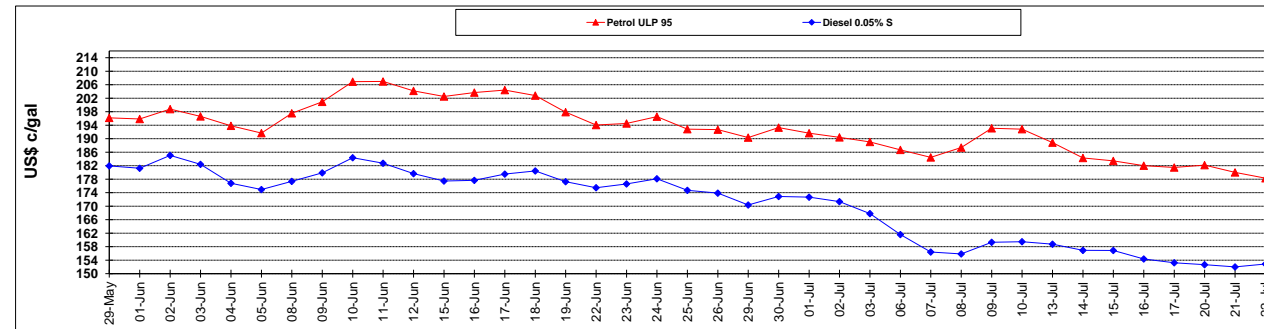
	PETROL 95	PETROL 93	DIESEL 0.05%	DIESEL 0.005%	ILL. PAR.
- MOVEMENT IN INTERNATIONAL PRODUCT PRICES	42.662	43.935	68.836	66.668	64.904
- MOVEMENT IN EXCHANGE RATE	(2.630)	(2.563)	(2.303)	(2.325)	(2.263)
AVERAGE UNIT OVER/(UNDER) RECOVERY 26/06/2015 - 22/07/2015	40.032	41.372	66.533	64.344	62.641

R/\$ EXCHANGE RATE - (R/\$ 12.3722 - 22/07/2015)

EXCHANGE RATE USED IN BASIC FUEL PRICE



INTERNATIONAL PRODUCT PRICES OF BASKET USED IN BASIC FUEL PRICE



BASIC FUEL PRICE IN SA CENTS PER LITRE

