

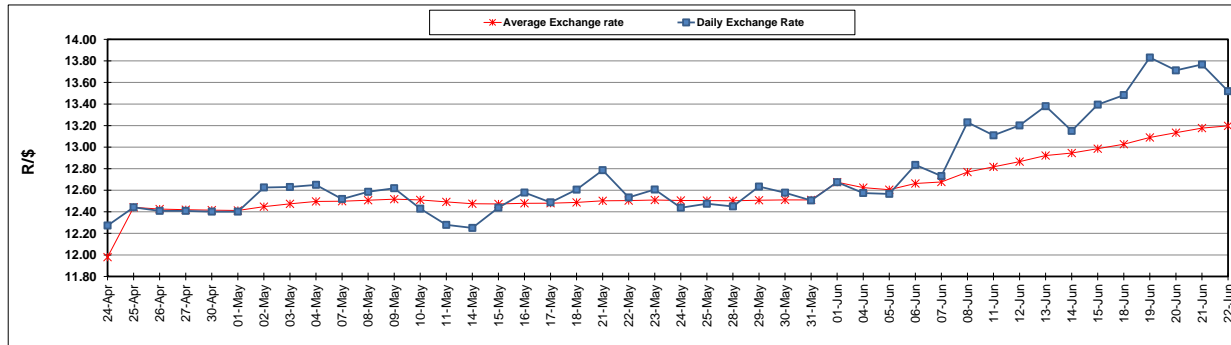
	PETROL 95 ULP	PETROL 93 ULP & LRP	DIESEL 0.05%	DIESEL 0.005%	ILL. PAR.
GAUTENG PUMP PRICE (SA c/l) AS FROM 06/06/2018	1 579.000	1 554.000	-	-	-
WHOLESALE PRICE (SA c/l) AS FROM 06/06/2018	-	-	1 418.830	1 425.230	927.088
SINGLE NATIONAL MAXIMUM RETAIL PRICE	-	-	-	-	1 198.000
BASIC FUEL PRICE - 22/06/2018 (SA c/l)	733.821	722.707	754.213	758.664	761.951
PRESS RELEASE CONTRIBUTION TO BFP 06/06/2018 - 22/06/2018 (SA c/l)	727.070	712.070	745.630	752.030	754.128
UNIT OVER/(UNDER) RECOVERY - 22/06/2018 (SA c/l)	(6.751)	(10.637)	(8.583)	(6.634)	(7.823)
AVERAGE BASIC FUEL PRICE 01/06/2018 - 22/06/2018	734.771	722.971	754.910	759.165	758.548
AVERAGE UNIT OVER/(UNDER) RECOVERY 01/06/2018 - 22/06/2018	(23.076)	(26.276)	(25.218)	(23.447)	(19.795)

### ANALYSIS MOVEMENT OF AVERAGE OVER/(UNDER) RECOVERY

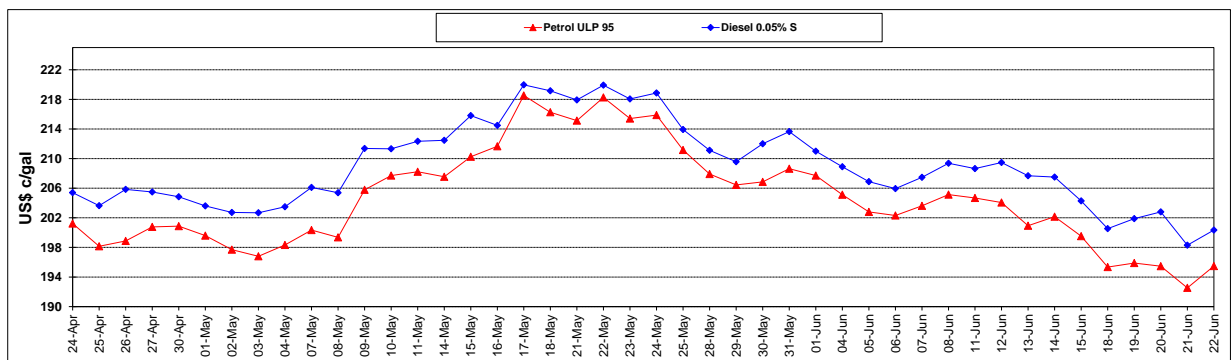
	PETROL 95	PETROL 93	DIESEL 0.05%	DIESEL 0.005%	ILL. PAR.
- MOVEMENT IN INTERNATIONAL PRODUCT PRICES	15.206	11.391	14.114	16.106	19.726
- MOVEMENT IN EXCHANGE RATE	(38.282)	(37.667)	(39.331)	(39.553)	(39.521)
AVERAGE UNIT OVER/(UNDER) RECOVERY 01/06/2018 - 22/06/2018	(23.076)	(26.276)	(25.218)	(23.447)	(19.795)

### R/\$ EXCHANGE RATE - (R/\$13.5195 - 22/06/2018)

#### EXCHANGE RATE USED IN BASIC FUEL PRICE



#### INTERNATIONAL PRODUCT PRICES OF BASKET USED IN BASIC FUEL PRICE



#### BASIC FUEL PRICE IN SA CENTS PER LITRE

