

UPDATE OF THE BASIC FUEL PRICE

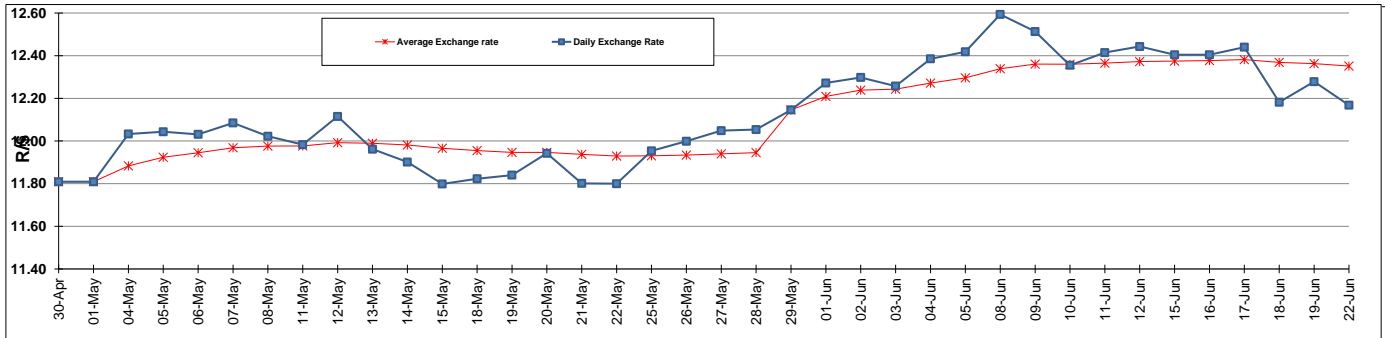
	PETROL 95 ULP	PETROL 93 ULP & LRP	DIESEL 0.05%	DIESEL 0.005%	ILL. PAR.
GAUTENG PUMP PRICE (SA c/l) AS FROM 03/06/2015	1,336.000	1,308.000	-	-	-
WHOLESALE PRICE (SA c/l) AS FROM 03/06/2015	-	-	1,166.790	1,170.190	780.828
SINGLE NATIONAL MAXIMUM RETAIL PRICE	-	-	-	-	1,006.000
BASIC FUEL PRICE - 22/06/2015 (SA c/l)	672.681	657.205	616.479	620.128	606.732
PRESS RELEASE CONTRIBUTION TO BFP 03/06/2015 - 22/06/2015 (SA c/l)	662.650	664.650	638.630	642.030	623.128
UNIT OVER/(UNDER) RECOVERY (SA c/l) - 22/06/2015	(10.031)	7.445	22.151	21.902	16.396
AVERAGE BASIC FUEL PRICE 29/05/2015 - 22/06/2015	701.166	686.185	639.400	642.209	624.308
AVERAGE UNIT OVER/(UNDER) RECOVERY 29/05/2015 - 22/06/2015	(46.811)	(33.358)	(9.417)	(8.296)	(8.591)

ANALYSIS MOVEMENT OF AVERAGE OVER/(UNDER) RECOVERY

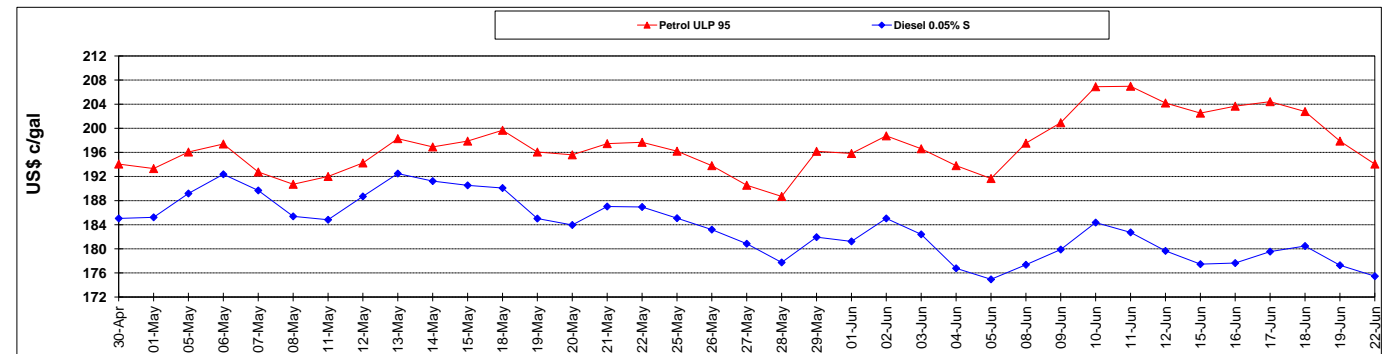
	PETROL 95	PETROL 93	DIESEL 0.05%	DIESEL 0.005%	ILL. PAR.
- MOVEMENT IN INTERNATIONAL PRODUCT PRICES	(23.768)	(10.809)	11.596	12.808	11.925
- MOVEMENT IN EXCHANGE RATE	(23.042)	(22.550)	(21.013)	(21.105)	(20.517)
AVERAGE UNIT OVER/(UNDER) RECOVERY 29/05/2015 - 22/06/2015	(46.811)	(33.358)	(9.417)	(8.296)	(8.591)

R/\$ EXCHANGE RATE - (R/\$ 12.1678 - 22/06/2015)

EXCHANGE RATE USED IN BASIC FUEL PRICE



INTERNATIONAL PRODUCT PRICES OF BASKET USED IN BASIC FUEL PRICE



BASIC FUEL PRICE IN SA CENTS PER LITRE

