

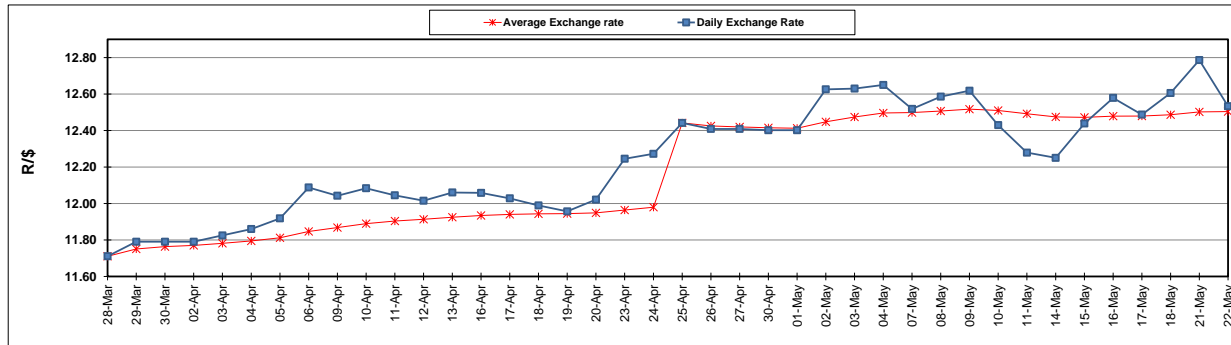
	PETROL 95 ULP	PETROL 93 ULP & LRP	DIESEL 0.05%	DIESEL 0.005%	ILL. PAR.
GAUTENG PUMP PRICE (SA c/l) AS FROM 02/05/2018	1 497.000	1 472.000	-	-	-
WHOLESALE PRICE (SA c/l) AS FROM 02/05/2018	-	-	1 333.830	1 338.230	845.088
SINGLE NATIONAL MAXIMUM RETAIL PRICE	-	-	-	-	1 089.000
BASIC FUEL PRICE - 22/05/2018 (SA c/l)	758.057	746.551	766.520	772.698	770.781
PRESS RELEASE CONTRIBUTION TO BFP 02/05/2018 - 22/05/2018 (SA c/l)	645.070	630.070	660.630	665.030	672.128
UNIT OVER/(UNDER) RECOVERY - 22/05/2018 (SA c/l)	(112.987)	(116.481)	(105.890)	(107.668)	(98.653)
AVERAGE BASIC FUEL PRICE 25/04/2018 - 22/05/2018	714.303	701.409	731.874	737.673	742.114
AVERAGE UNIT OVER/(UNDER) RECOVERY 25/04/2018 - 22/05/2018	(81.483)	(83.589)	(85.994)	(87.143)	(82.986)

ANALYSIS MOVEMENT OF AVERAGE OVER/(UNDER) RECOVERY

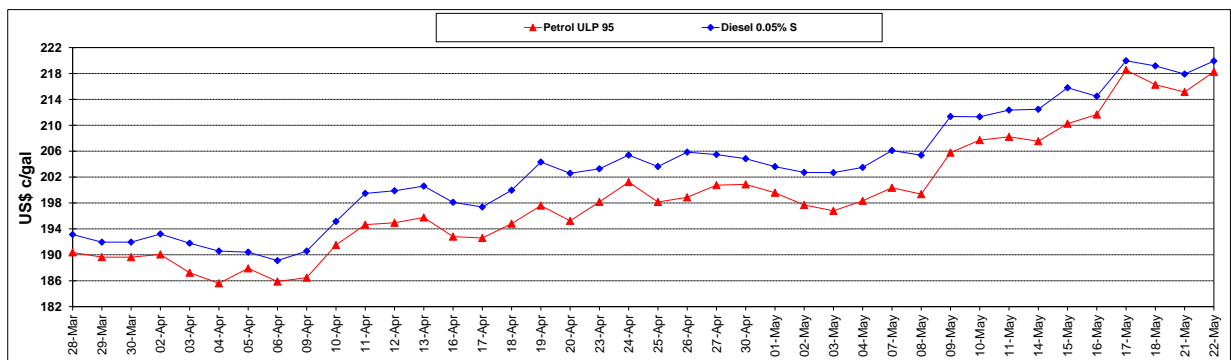
	PETROL 95	PETROL 93	DIESEL 0.05%	DIESEL 0.005%	ILL. PAR.
- MOVEMENT IN INTERNATIONAL PRODUCT PRICES	(51.526)	(54.173)	(55.300)	(56.206)	(51.863)
- MOVEMENT IN EXCHANGE RATE	(29.957)	(29.416)	(30.694)	(30.937)	(31.123)
AVERAGE UNIT OVER/(UNDER) RECOVERY 25/04/2018 - 22/05/2018	(81.483)	(83.589)	(85.994)	(87.143)	(82.986)

R/\$ EXCHANGE RATE - (R/\$12.5335 - 22/05/2018)

EXCHANGE RATE USED IN BASIC FUEL PRICE



INTERNATIONAL PRODUCT PRICES OF BASKET USED IN BASIC FUEL PRICE



BASIC FUEL PRICE IN SA CENTS PER LITRE

