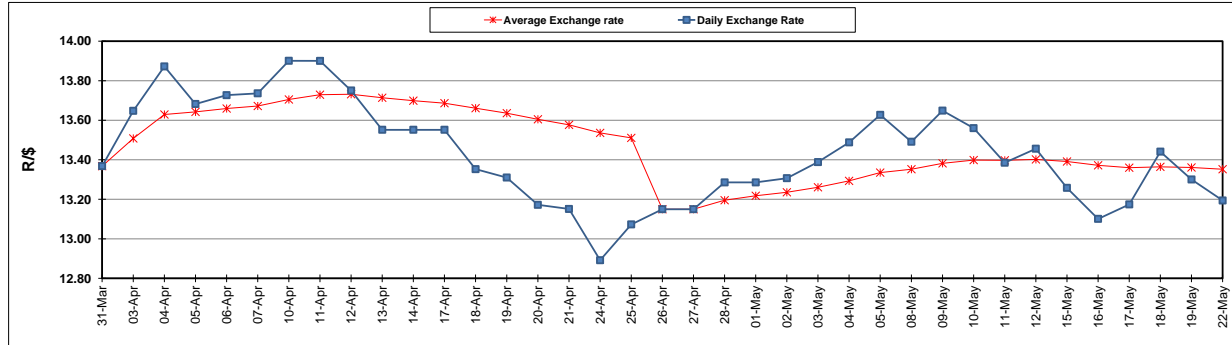


	PETROL 95 ULP	PETROL 93 ULP & LRP	DIESEL 0.05%	DIESEL 0.005%	ILL. PAR.
GAUTENG PUMP PRICE (SA c/l) AS FROM 03/05/2017	1 379.000	1 357.000	-	-	-
WHOLESALE PRICE (SA c/l) AS FROM 03/05/2017	-	-	1 180.330	1 184.730	736.088
SINGLE NATIONAL MAXIMUM RETAIL PRICE	-	-	-	-	947.000
BASIC FUEL PRICE - 22/05/2017 (SA c/l)	584.188	571.270	562.194	565.620	559.213
PRESS RELEASE CONTRIBUTION TO BFP 03/05/2017 - 22/05/2017 (SA c/l)	597.670	585.670	568.630	573.030	565.128
UNIT OVER/(UNDER) RECOVERY (SA c/l) - 22/05/2017	13.482	14.400	6.436	7.410	5.915
AVERAGE BASIC FUEL PRICE 26/04/2017 - 22/05/2017	563.954	547.848	540.808	544.304	535.320
AVERAGE UNIT OVER/(UNDER) RECOVERY 26/04/2017 - 22/05/2017	20.821	24.927	19.928	20.305	20.861

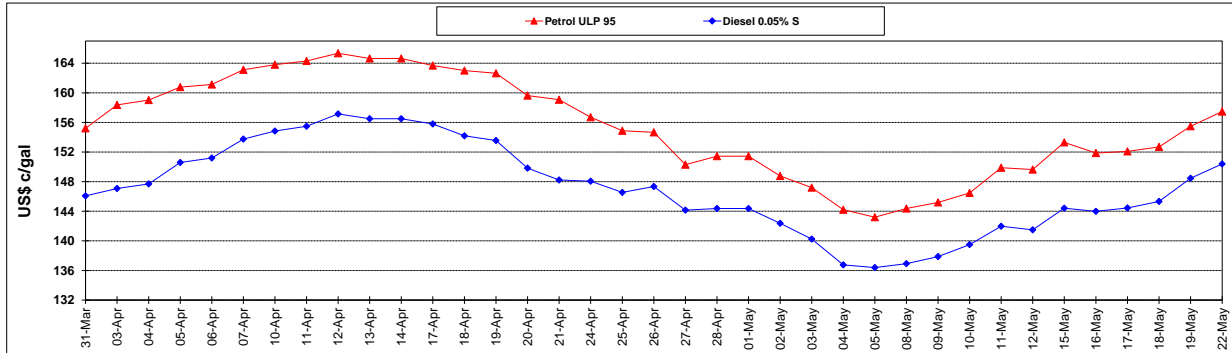
ANALYSIS MOVEMENT OF AVERAGE OVER/(UNDER) RECOVERY					
	PETROL 95	PETROL 93	DIESEL 0.05%	DIESEL 0.005%	ILL. PAR.
- MOVEMENT IN INTERNATIONAL PRODUCT PRICES	14.126	18.424	13.507	13.844	14.506
- MOVEMENT IN EXCHANGE RATE	6.695	6.503	6.420	6.461	6.355
AVERAGE UNIT OVER/(UNDER) RECOVERY 26/04/2017 - 22/05/2017	20.821	24.927	19.928	20.305	20.861

R/\$ EXCHANGE RATE - (R/\$ 13.1940 - 22/05/2017)

EXCHANGE RATE USED IN BASIC FUEL PRICE



INTERNATIONAL PRODUCT PRICES OF BASKET USED IN BASIC FUEL PRICE



BASIC FUEL PRICE IN SA CENTS PER LITRE

