

UPDATE OF THE BASIC FUEL PRICE

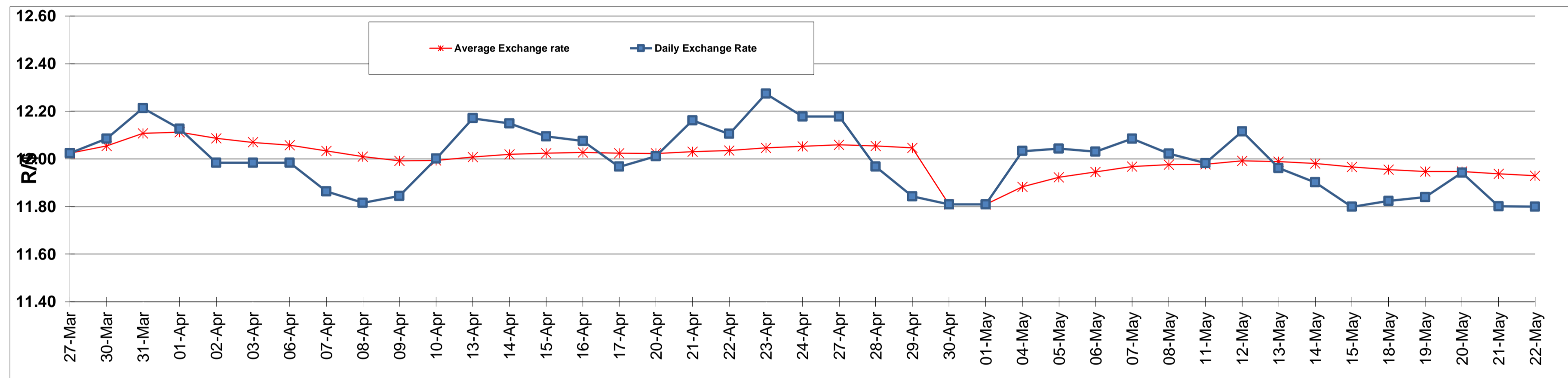
	PETROL 95 ULP	PETROL 93 ULP & LRP	DIESEL 0.05%	DIESEL 0.005%	ILL. PAR.
GAUTENG PUMP PRICE (SA c/l) AS FROM 07/05/2015	1,289.000	1,261.000	-	-	-
WHOLESALE PRICE (SA c/l) AS FROM 07/05/2015	-	-	1,122.790	1,129.190	743.828
SINGLE NATIONAL MAXIMUM RETAIL PRICE	-	-	-	-	957.000
BASIC FUEL PRICE - 22/05/2015 (SA c/l)	663.640	650.907	633.791	635.708	615.143
PRESS RELEASE CONTRIBUTION TO BFP 06/05/2015 - 22/05/2015 (SA c/l)	615.650	597.650	589.630	596.030	581.128
UNIT OVER/(UNDER) RECOVERY (SA c/l) - 22/05/2015	(47.990)	(53.257)	(44.161)	(39.678)	(34.015)
AVERAGE BASIC FUEL PRICE 30/04/2015 - 22/05/2015	663.950	650.566	643.412	645.799	626.912
AVERAGE UNIT OVER/(UNDER) RECOVERY 30/04/2015 - 22/05/2015	(48.300)	(52.916)	(52.606)	(48.592)	(44.608)

ANALYSIS MOVEMENT OF AVERAGE OVER/(UNDER) RECOVERY

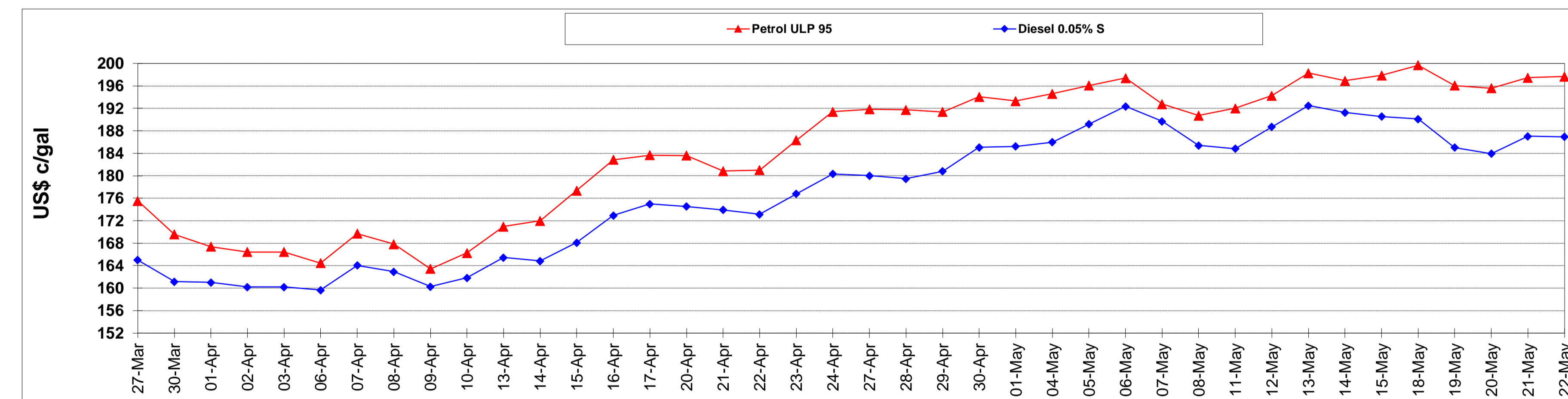
	PETROL 95	PETROL 93	DIESEL 0.05%	DIESEL 0.005%	ILL. PAR.
- MOVEMENT IN INTERNATIONAL PRODUCT PRICES	(54.790)	(59.275)	(58.895)	(54.905)	(50.736)
- MOVEMENT IN EXCHANGE RATE	6.490	6.359	6.289	6.312	6.128
AVERAGE UNIT OVER/(UNDER) RECOVERY 30/04/2015 - 22/05/2015	(48.300)	(52.916)	(52.606)	(48.592)	(44.608)

R/\$ EXCHANGE RATE - (R/\$ 11.8000 - 22/05/2015)

EXCHANGE RATE USED IN BASIC FUEL PRICE



INTERNATIONAL PRODUCT PRICES OF BASKET USED IN BASIC FUEL PRICE



BASIC FUEL PRICE IN SA CENTS PER LITRE

