

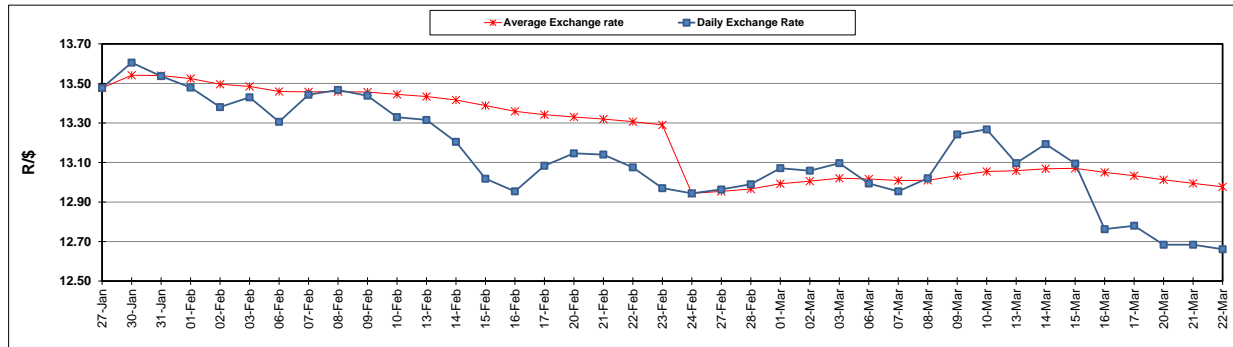
	PETROL 95 ULP	PETROL 93 ULP & LRP	DIESEL 0.05%	DIESEL 0.005%	ILL. PAR.
GAUTENG PUMP PRICE (SA c/l) AS FROM 01/03/2017	1 354.000	1 330.000	-	-	-
WHOLESALE PRICE (SA c/l) AS FROM 01/03/2017	-	-	1 160.830	1 163.230	750.588
SINGLE NATIONAL MAXIMUM RETAIL PRICE	-	-	-	-	966.000
BASIC FUEL PRICE - 22/03/2017 (SA c/l)	529.049	516.500	503.784	506.803	497.766
PRESS RELEASE CONTRIBUTION TO BFP 01/03/2017 - 22/03/2017 (SA c/l)	612.870	598.870	588.630	591.030	583.128
UNIT OVER/(UNDER) RECOVERY (SA c/l) - 22/03/2017	83.821	82.370	84.846	84.227	85.362
AVERAGE BASIC FUEL PRICE 24/02/2017 - 22/03/2017	553.943	542.151	547.489	550.398	539.846
AVERAGE UNIT OVER/(UNDER) RECOVERY 24/02/2017 - 22/03/2017	60.190	57.982	41.457	40.948	44.545

ANALYSIS MOVEMENT OF AVERAGE OVER/(UNDER) RECOVERY

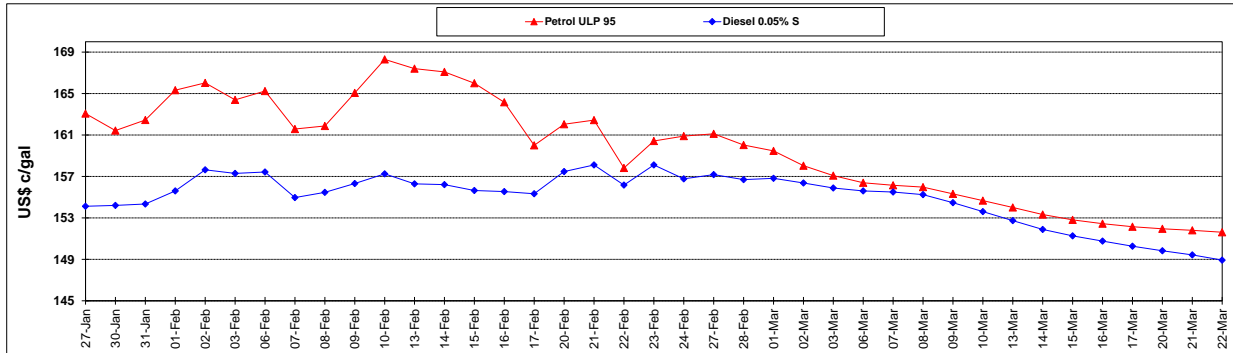
	PETROL 95	PETROL 93	DIESEL 0.05%	DIESEL 0.005%	ILL. PAR.
- MOVEMENT IN INTERNATIONAL PRODUCT PRICES	60.472	58.258	41.735	41.228	44.820
- MOVEMENT IN EXCHANGE RATE	(0.282)	(0.276)	(0.278)	(0.280)	(0.275)
AVERAGE UNIT OVER/(UNDER) RECOVERY 24/02/2017 - 22/03/2017	60.190	57.982	41.457	40.948	44.545

R/\$ EXCHANGE RATE - (R/\$ 12.6610 - 22/03/2017)

EXCHANGE RATE USED IN BASIC FUEL PRICE



INTERNATIONAL PRODUCT PRICES OF BASKET USED IN BASIC FUEL PRICE



BASIC FUEL PRICE IN SA CENTS PER LITRE

