

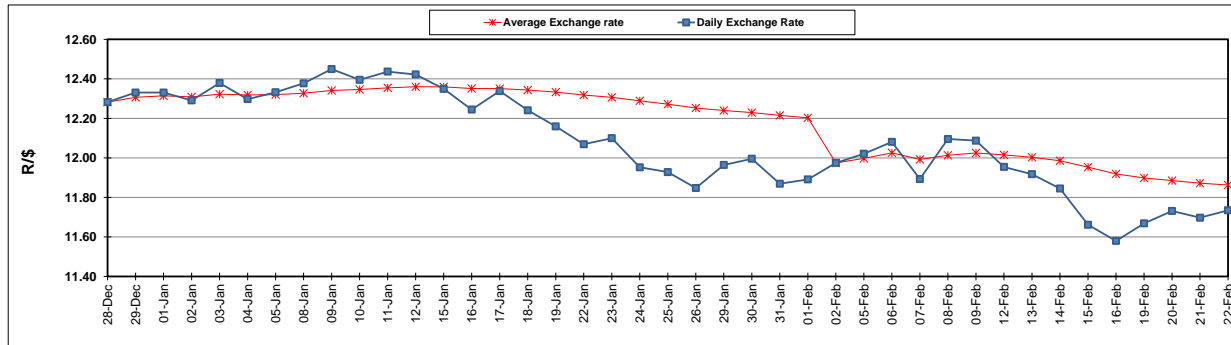
	PETROL 95 ULP	PETROL 93 ULP & LRP	DIESEL 0.05%	DIESEL 0.005%	ILL. PAR.
GAUTENG PUMP PRICE (SA c/l) AS FROM 07/02/2018	1 412.000	1 419.000	-	-	-
WHOLESALE PRICE (SA c/l) AS FROM 07/02/2018	-	-	1 256.630	1 259.030	818.388
SINGLE NATIONAL MAXIMUM RETAIL PRICE	-	-	-	-	1 056.000
BASIC FUEL PRICE - 22/02/2018 (SA c/l)	581.161	567.209	598.825	603.188	629.884
PRESS RELEASE CONTRIBUTION TO BFP 07/02/2018 - 22/02/2018 (SA c/l)	622.170	610.170	645.630	648.030	648.128
UNIT OVER/(UNDER) RECOVERY - 22/02/2018 (SA c/l)	41.009	42.961	46.805	44.842	18.244
AVERAGE BASIC FUEL PRICE 02/02/2018 - 22/02/2018	592.775	578.518	602.308	606.826	624.832
AVERAGE UNIT OVER/(UNDER) RECOVERY 02/02/2018 - 22/02/2018	35.395	37.652	46.722	44.604	27.096

ANALYSIS MOVEMENT OF AVERAGE OVER/(UNDER) RECOVERY

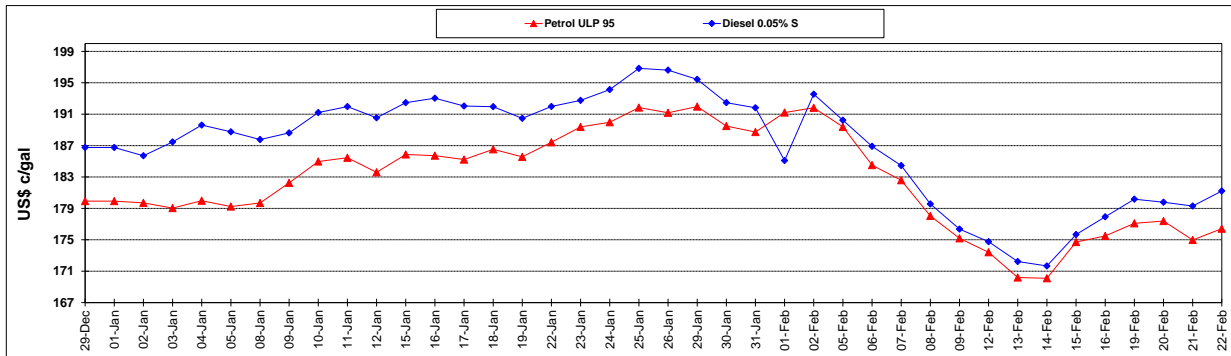
	PETROL 95	PETROL 93	DIESEL 0.05%	DIESEL 0.005%	ILL. PAR.
- MOVEMENT IN INTERNATIONAL PRODUCT PRICES	18.406	21.071	29.459	27.212	9.188
- MOVEMENT IN EXCHANGE RATE	16.989	16.581	17.263	17.392	17.908
AVERAGE UNIT OVER/(UNDER) RECOVERY 02/02/2018 - 22/02/2018	35.395	37.652	46.722	44.604	27.096

R/\$ EXCHANGE RATE - (R/\$11.7348 - 22/02/2018)

EXCHANGE RATE USED IN BASIC FUEL PRICE



INTERNATIONAL PRODUCT PRICES OF BASKET USED IN BASIC FUEL PRICE



BASIC FUEL PRICE IN SA CENTS PER LITRE

