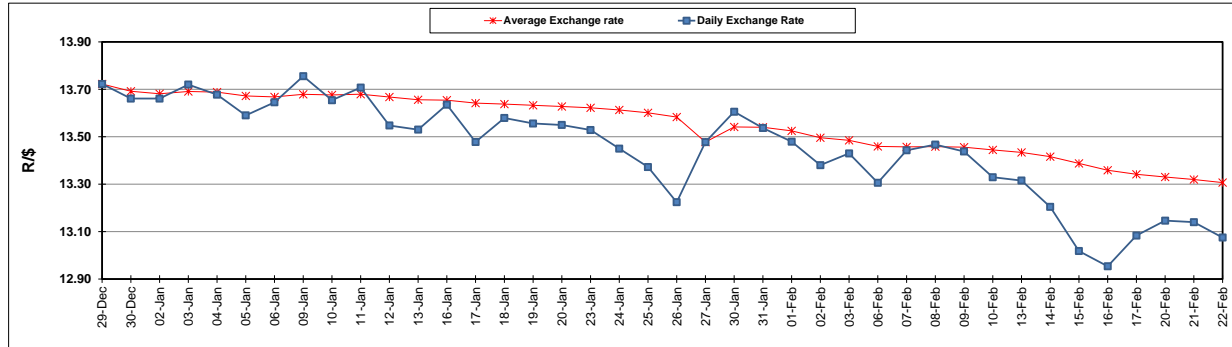


	PETROL 95 ULP	PETROL 93 ULP & LRP	DIESEL 0.05%	DIESEL 0.005%	ILL. PAR.
GAUTENG PUMP PRICE (SA c/l) AS FROM 01/02/2017	1 362.000	1 338.000	-	-	-
WHOLESALE PRICE (SA c/l) AS FROM 01/02/2017	-	-	1 162.830	1 165.230	758.588
SINGLE NATIONAL MAXIMUM RETAIL PRICE	-	-	-	-	976.000
BASIC FUEL PRICE - 22/02/2017 (SA c/l)	580.053	570.237	577.137	579.211	571.409
PRESS RELEASE CONTRIBUTION TO BFP 01/02/2017 - 22/02/2017 (SA c/l)	620.870	606.870	590.630	593.030	591.128
UNIT OVER/(UNDER) RECOVERY (SA c/l) - 22/02/2017	40.817	36.633	13.493	13.819	19.719
AVERAGE BASIC FUEL PRICE 27/01/2017 - 22/02/2017	610.620	596.717	586.184	588.575	580.573
AVERAGE UNIT OVER/(UNDER) RECOVERY 27/01/2017- 22/02/2017	5.671	5.574	1.130	1.139	7.870

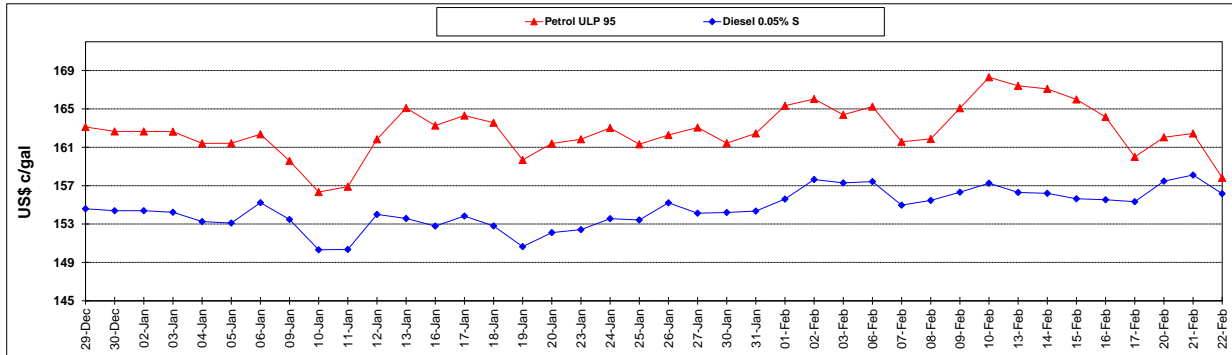
ANALYSIS MOVEMENT OF AVERAGE OVER/(UNDER) RECOVERY					
	PETROL 95	PETROL 93	DIESEL 0.05%	DIESEL 0.005%	ILL. PAR.
- MOVEMENT IN INTERNATIONAL PRODUCT PRICES	(7.008)	(6.816)	(11.041)	(11.082)	(4.184)
- MOVEMENT IN EXCHANGE RATE	12.679	12.390	12.171	12.221	12.055
AVERAGE UNIT OVER/(UNDER) RECOVERY 27/01/2017 - 22/02/2017	5.671	5.574	1.130	1.139	7.871

R/\$ EXCHANGE RATE - (R/\$ 13.0750- 22/02/2017)

EXCHANGE RATE USED IN BASIC FUEL PRICE



INTERNATIONAL PRODUCT PRICES OF BASKET USED IN BASIC FUEL PRICE



BASIC FUEL PRICE IN SA CENTS PER LITRE

