

## UPDATE OF THE BASIC FUEL PRICE

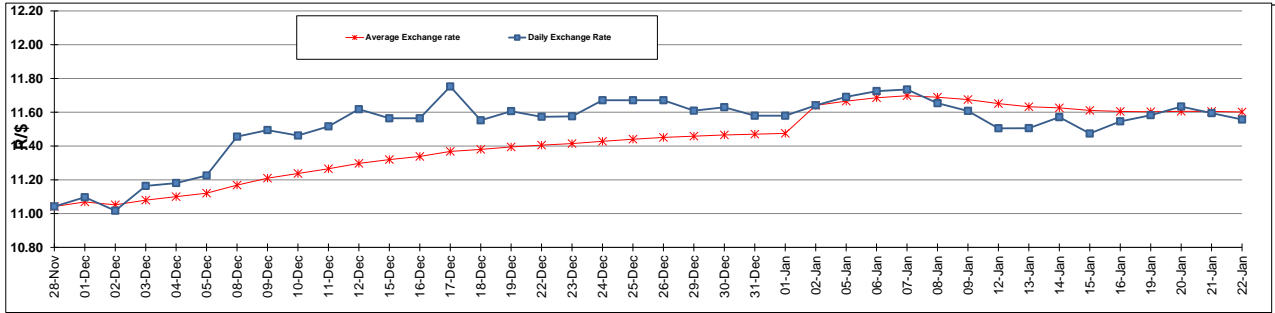
	PETROL 95 ULP	PETROL 93 ULP & LRP	DIESEL 0.05%	DIESEL 0.005%	ILL. PAR.
GAUTENG PUMP PRICE (SA c/l) AS FROM 07/01/2015	1,124.000	1,102.000	-	-	-
WHOLESALE PRICE (SA c/l) AS FROM 07/01/2015	-	-	1,028.090	1,032.490	747.928
SINGLE NATIONAL MAXIMUM RETAIL PRICE	-	-	-	-	969.000
BASIC FUEL PRICE - 22/01/2015 (SA c/l)	450.318	435.619	487.889	492.730	499.227
PRESS RELEASE CONTRIBUTION TO BFP 07/01/2015 - 22/01/2015 (SA c/l)	533.250	521.250	582.630	587.030	593.128
UNIT OVER/(UNDER) RECOVERY (SA c/l) - 22/01/2015	82.932	85.631	94.741	94.300	93.901
AVERAGE BASIC FUEL PRICE 02/01/2015 - 22/01/2015	460.897	447.895	500.642	504.755	508.938
AVERAGE UNIT OVER/(UNDER) RECOVERY 02/01/2015 - 22/01/2015	96.953	98.755	102.788	103.275	105.790

### ANALYSIS MOVEMENT OF AVERAGE OVER/(UNDER) RECOVERY

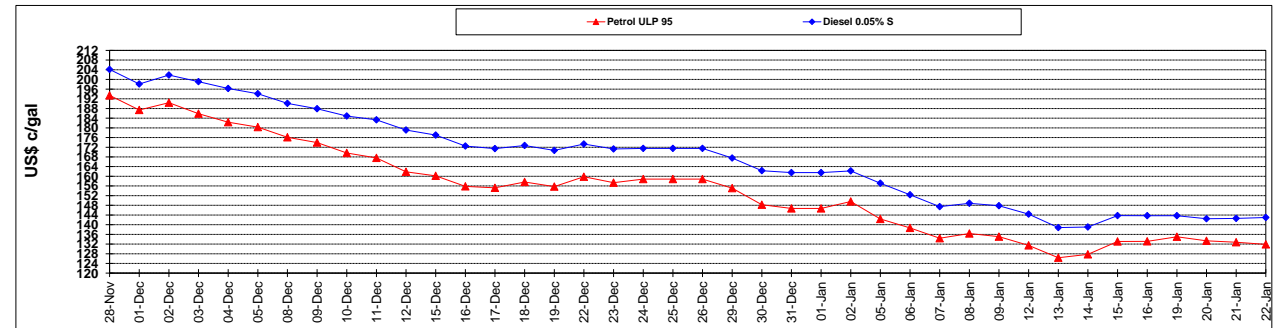
	PETROL 95	PETROL 93	DIESEL 0.05%	DIESEL 0.005%	ILL. PAR.
- MOVEMENT IN INTERNATIONAL PRODUCT PRICES	101.982	103.643	108.251	108.783	111.344
- MOVEMENT IN EXCHANGE RATE	(5.029)	(4.888)	(5.463)	(5.508)	(5.554)
AVERAGE UNIT OVER/(UNDER) RECOVERY 02/01/2015 - 22/01/2015	96.953	98.755	102.788	103.275	105.790

**R/\$ EXCHANGE RATE - (R/\$ 11.5571 - 22/01/2015)**

### EXCHANGE RATE USED IN BASIC FUEL PRICE



### INTERNATIONAL PRODUCT PRICES OF BASKET USED IN BASIC FUEL PRICE



### BASIC FUEL PRICE IN SA CENTS PER LITRE

