

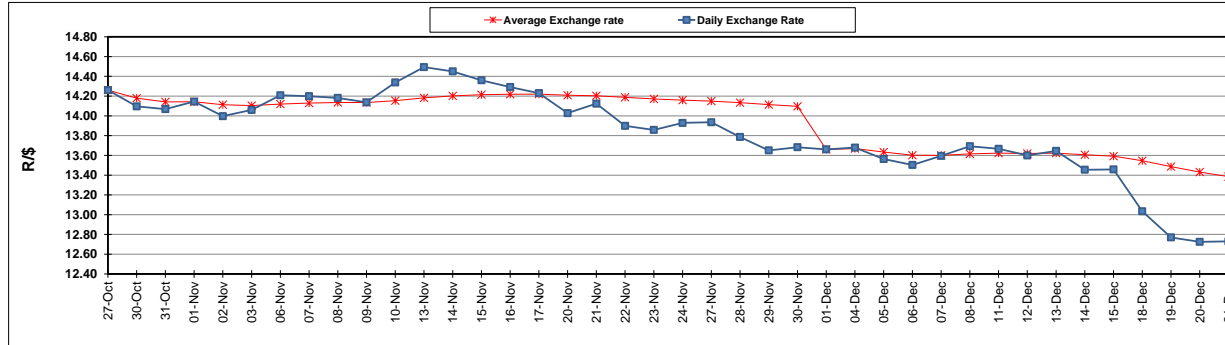
	PETROL 95 ULP	PETROL 93 ULP & LRP	DIESEL 0.05%	DIESEL 0.005%	ILL. PAR.
GAUTENG PUMP PRICE (SA c/l) AS FROM 07/12/2017	1 476.000	1 449.000	-	-	-
WHOLESALE PRICE (SA c/l) AS FROM 07/12/2017	-	-	1 295.630	1 302.030	865.388
SINGLE NATIONAL MAXIMUM RETAIL PRICE	-	-	-	-	1 119.000
BASIC FUEL PRICE - 21/12/2017 (SA c/l)	623.916	612.871	636.522	639.004	639.097
PRESS RELEASE CONTRIBUTION TO BFP 05/12/2017 - 21/12/2017 (SA c/l)	686.170	669.170	684.630	691.030	695.128
UNIT OVER/(UNDER) RECOVERY - 21/12/2017 (SA c/l)	62.254	56.299	48.108	52.026	56.031
AVERAGE BASIC FUEL PRICE 01/12/2017 - 21/12/2017	647.256	635.156	656.974	660.383	659.330
AVERAGE UNIT OVER/(UNDER) RECOVERY 01/12/2017 - 21/12/2017	25.494	20.594	15.456	19.047	20.998

ANALYSIS MOVEMENT OF AVERAGE OVER/(UNDER) RECOVERY

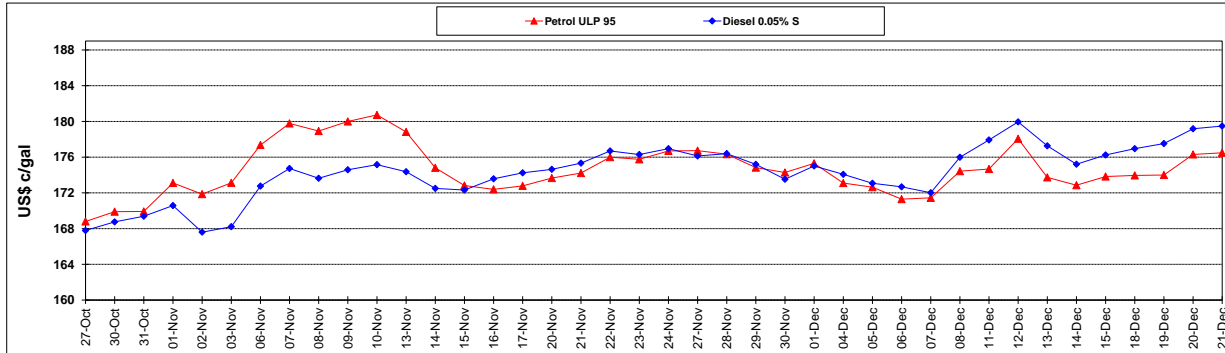
	PETROL 95	PETROL 93	DIESEL 0.05%	DIESEL 0.005%	ILL. PAR.
- MOVEMENT IN INTERNATIONAL PRODUCT PRICES	(8.902)	(13.159)	(19.456)	(16.047)	(14.040)
- MOVEMENT IN EXCHANGE RATE	34.396	33.753	34.912	35.094	35.038
AVERAGE UNIT OVER/(UNDER) RECOVERY 01/12/2017 - 21/12/2017	25.494	20.594	15.456	19.047	20.998

R/\$ EXCHANGE RATE - (R/\$ 12.7295 - 21/12/2017)

EXCHANGE RATE USED IN BASIC FUEL PRICE



INTERNATIONAL PRODUCT PRICES OF BASKET USED IN BASIC FUEL PRICE



BASIC FUEL PRICE IN SA CENTS PER LITRE

