

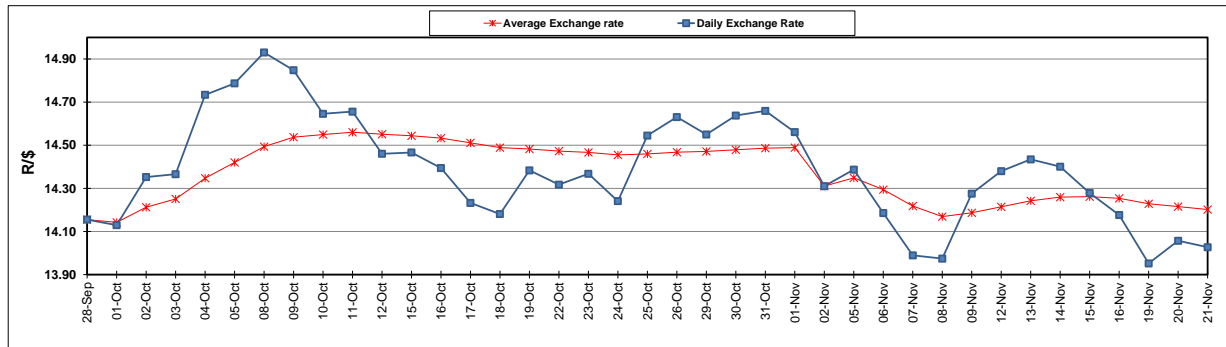
	PETROL 95 ULP	PETROL 93 ULP & LRP	DIESEL 0.05%	DIESEL 0.005%	ILL. PAR.
GAUTENG PUMP PRICE (SA c/l) AS FROM 07/11/2018	1 708.000	1 685.000	-	-	-
WHOLESALE PRICE (SA c/l) AS FROM 07/11/2018	-	-	1 612.750	1 620.150	1 085.088
SINGLE NATIONAL MAXIMUM RETAIL PRICE	-	-	-	-	1 409.000
BASIC FUEL PRICE - 21/11/2018 (SA c/l)	620.382	607.673	728.800	733.433	739.561
PRESS RELEASE CONTRIBUTION TO BFP 07/11/2018 - 21/11/2018 (SA c/l)	829.250	816.250	917.630	925.030	912.128
UNIT OVER/(UNDER) RECOVERY - 21/11/2018 (SA c/l)	208.868	208.577	188.830	191.597	172.567
AVERAGE BASIC FUEL PRICE 02/11/2018 - 21/11/2018	666.293	656.257	797.278	803.411	800.600
AVERAGE UNIT OVER/(UNDER) RECOVERY 02/11/2018 - 21/11/2018	167.655	164.690	114.781	115.405	105.528

ANALYSIS MOVEMENT OF AVERAGE OVER/(UNDER) RECOVERY

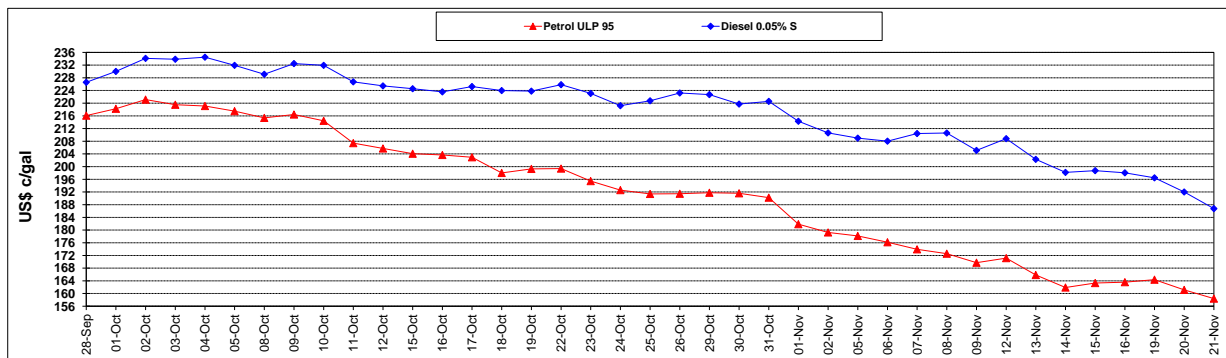
	PETROL 95	PETROL 93	DIESEL 0.05%	DIESEL 0.005%	ILL. PAR.
- MOVEMENT IN INTERNATIONAL PRODUCT PRICES	154.180	151.419	98.658	99.158	89.338
- MOVEMENT IN EXCHANGE RATE	13.474	13.271	16.123	16.247	16.190
AVERAGE UNIT OVER/(UNDER) RECOVERY 02/11/2018 - 21/11/2018	167.655	164.690	114.781	115.405	105.528

R/\$ EXCHANGE RATE - (R/\$14.0270 - 21/11/2018)

EXCHANGE RATE USED IN BASIC FUEL PRICE



INTERNATIONAL PRODUCT PRICES OF BASKET USED IN BASIC FUEL PRICE



BASIC FUEL PRICE IN SA CENTS PER LITRE

