

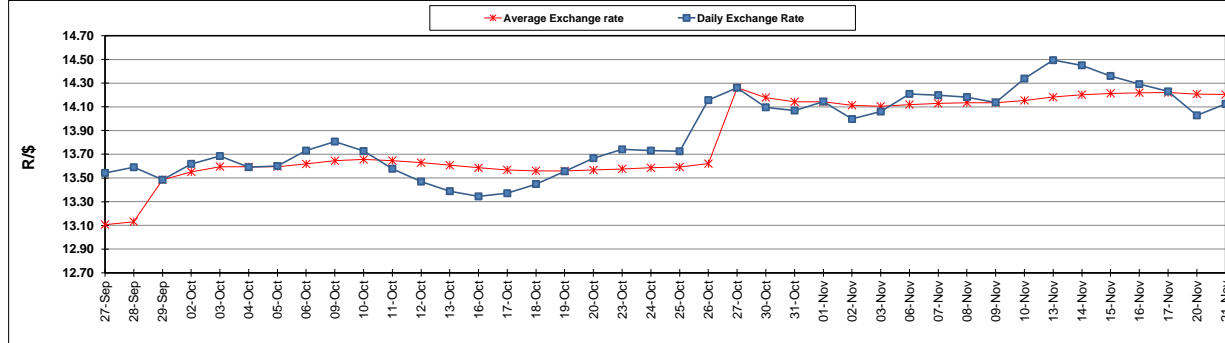
	PETROL 95 ULP	PETROL 93 ULP & LRP	DIESEL 0.05%	DIESEL 0.005%	ILL. PAR.
GAUTENG PUMP PRICE (SA c/l) AS FROM 01/11/2017	1 405.000	1 378.000	-	-	-
WHOLESALE PRICE (SA c/l) AS FROM 01/11/2017	-	-	1 235.330	1 244.730	792.088
SINGLE NATIONAL MAXIMUM RETAIL PRICE	-	-	-	-	1 021.000
BASIC FUEL PRICE -21/11/2017 (SA c/l)	685.304	670.837	692.340	696.265	699.921
PRESS RELEASE CONTRIBUTION TO BFP 01/11/2017 - 21/11/2017 (SA c/l)	619.070	602.070	623.630	633.030	621.128
UNIT OVER/(UNDER) RECOVERY (SA c/l) - 21/11/2017	(66.234)	(68.767)	(68.710)	(63.235)	(78.793)
AVERAGE BASIC FUEL PRICE 27/10/2017 - 21/11/2017	690.061	674.360	683.936	690.211	693.572
AVERAGE UNIT OVER/(UNDER) RECOVERY 27/10/2017 - 21/11/2017	(71.658)	(72.956)	(64.139)	(61.681)	(75.944)

### ANALYSIS MOVEMENT OF AVERAGE OVER/(UNDER) RECOVERY

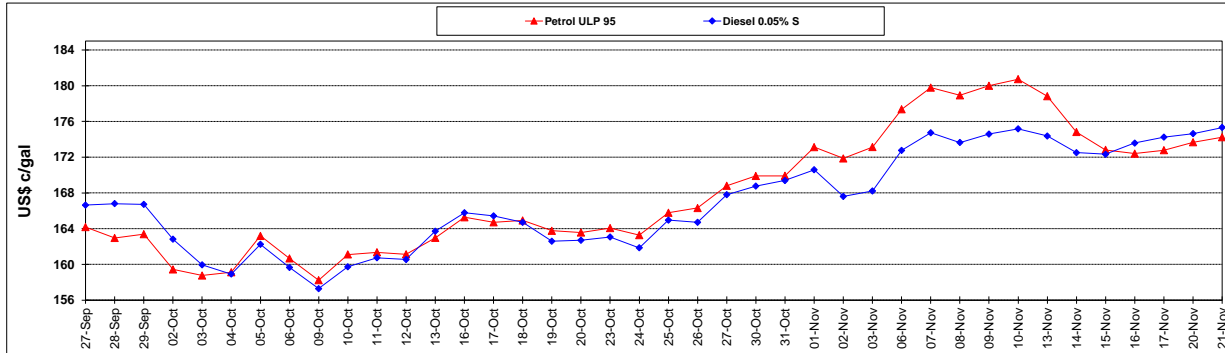
	PETROL 95	PETROL 93	DIESEL 0.05%	DIESEL 0.005%	ILL. PAR.
- MOVEMENT IN INTERNATIONAL PRODUCT PRICES	(43.344)	(45.287)	(36.076)	(33.361)	(47.486)
- MOVEMENT IN EXCHANGE RATE	(28.314)	(27.670)	(28.063)	(28.320)	(28.458)
AVERAGE UNIT OVER/(UNDER) RECOVERY 27/10/2017 - 21/11/2017	(71.658)	(72.956)	(64.139)	(61.681)	(75.944)

### R/\$ EXCHANGE RATE - (R/\$ 14.1240- 21/11/2017)

#### EXCHANGE RATE USED IN BASIC FUEL PRICE



#### INTERNATIONAL PRODUCT PRICES OF BASKET USED IN BASIC FUEL PRICE



#### BASIC FUEL PRICE IN SA CENTS PER LITRE

