

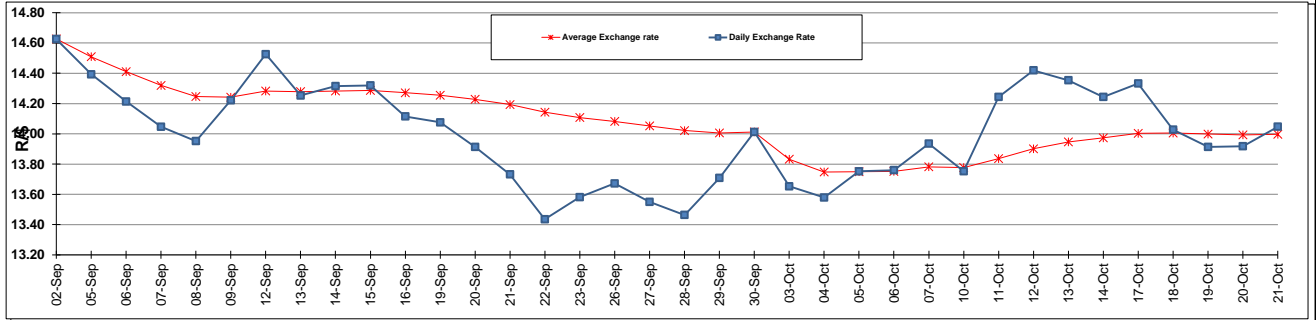
	PETROL 95 ULP	PETROL 93 ULP & LRP	DIESEL 0.05%	DIESEL 0.005%	ILL. PAR.
GAUTENG PUMP PRICE (SA c/l) AS FROM 05/10/2016	1 260.000	1 234.000	-	-	-
WHOLESALE PRICE (SA c/l) AS FROM 05/10/2016	-	-	1 071.870	1 075.270	669.628
SINGLE NATIONAL MAXIMUM RETAIL PRICE	-	-	-	-	858.000
BASIC FUEL PRICE - 21/10/2016 (SA c/l)	586.440	566.173	571.451	575.397	563.139
PRESS RELEASE CONTRIBUTION TO BFP 05/10/2016 - 21/10/2016 (SA c/l)	538.970	522.970	505.630	509.030	508.128
UNIT OVER/(UNDER) RECOVERY (SA c/l) - 21/10/2016	(47.470)	(43.203)	(65.821)	(66.367)	(55.011)
AVERAGE BASIC FUEL PRICE 30/09/2016 - 21/10/2016	578.148	561.886	566.463	569.758	562.618
AVERAGE UNIT OVER/(UNDER) RECOVERY 30/09/2016 - 21/10/2016	(47.240)	(47.166)	(65.145)	(65.040)	(58.615)

ANALYSIS MOVEMENT OF AVERAGE OVER/(UNDER) RECOVERY

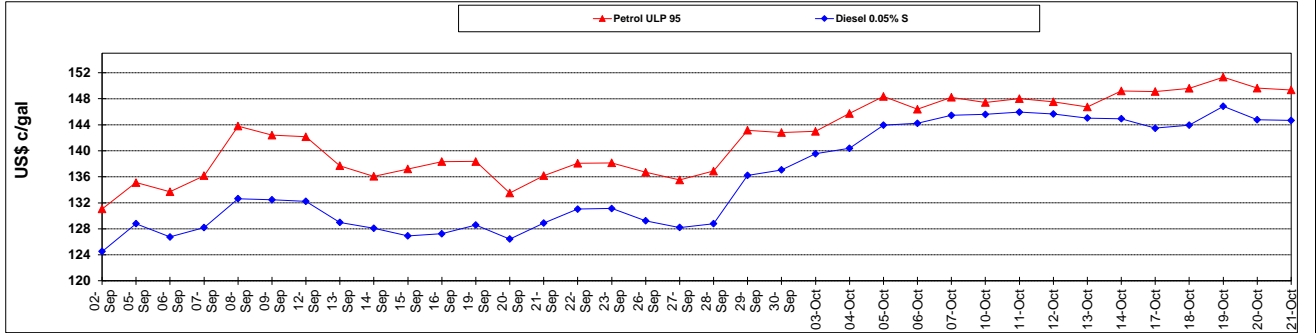
	PETROL 95	PETROL 93	DIESEL 0.05%	DIESEL 0.005%	ILL. PAR.
- MOVEMENT IN INTERNATIONAL PRODUCT PRICES	(47.624)	(47.539)	(65.521)	(65.419)	(58.989)
- MOVEMENT IN EXCHANGE RATE	0.384	0.373	0.376	0.379	0.374
AVERAGE UNIT OVER/(UNDER) RECOVERY 30/09/2016 - 21/10/2016	(47.240)	(47.166)	(65.145)	(65.040)	(58.615)

R/\$ EXCHANGE RATE - (R/\$14.0470- 21/10/2016)

EXCHANGE RATE USED IN BASIC FUEL PRICE



INTERNATIONAL PRODUCT PRICES OF BASKET USED IN BASIC FUEL PRICE



BASIC FUEL PRICE IN SA CENTS PER LITRE

