

UPDATE OF THE BASIC FUEL PRICE

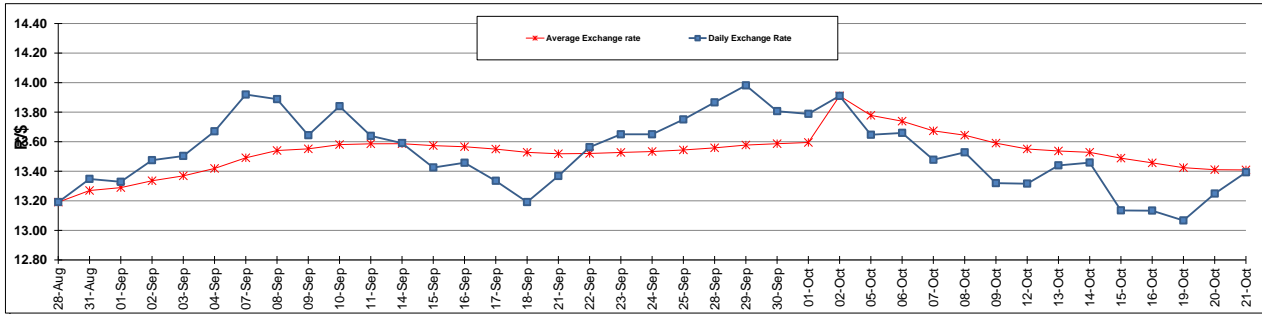
	PETROL 95 ULP	PETROL 93 ULP & LRP	DIESEL 0.05%	DIESEL 0.005%	ILL. PAR.
GAUTENG PUMP PRICE (SA c/l) AS FROM 07/10/2015	1,261.000	1,230.000	-	-	-
WHOLESALE PRICE (SA c/l) AS FROM 07/10/2015	-	-	1,093.970	1,100.370	711.828
SINGLE NATIONAL MAXIMUM RETAIL PRICE	-	-	-	-	914.000
BASIC FUEL PRICE - 21/10/2015 (SA c/l)	530.107	517.342	530.112	536.631	526.560
PRESS RELEASE CONTRIBUTION TO BFP 07/10/2015 - 21/10/2015 (SA c/l)	582.870	561.870	565.630	572.030	554.128
UNIT OVER/(UNDER) RECOVERY (SA c/l) - 21/10/2015	52.763	44.528	35.518	35.399	27.568
AVERAGE BASIC FUEL PRICE 02/10/2015 - 21/10/2015	564.826	549.074	551.879	557.465	545.360
AVERAGE UNIT OVER/(UNDER) RECOVERY 02/10/2015 - 21/10/2015	17.187	13.224	2.394	3.636	(1.946)

ANALYSIS MOVEMENT OF AVERAGE OVER/(UNDER) RECOVERY

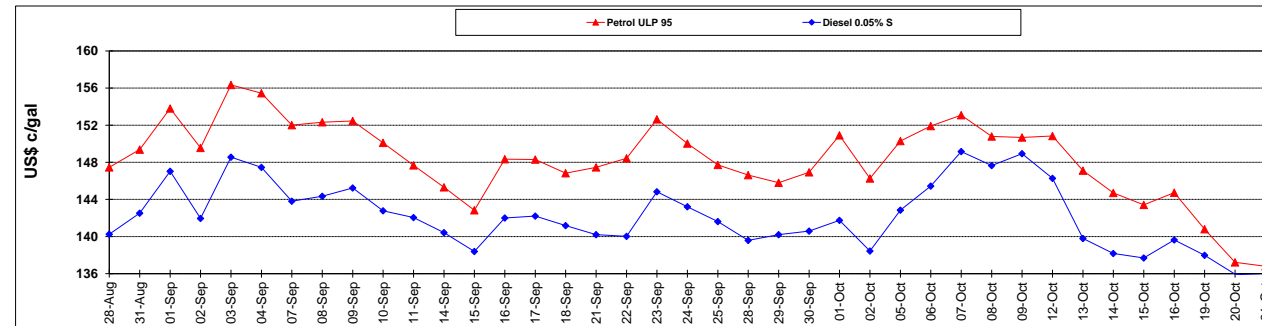
	PETROL 95	PETROL 93	DIESEL 0.05%	DIESEL 0.005%	ILL. PAR.
- MOVEMENT IN INTERNATIONAL PRODUCT PRICES	9.382	5.638	(5.232)	(4.067)	(9.482)
- MOVEMENT IN EXCHANGE RATE	7.805	7.587	7.626	7.703	7.536
AVERAGE UNIT OVER/(UNDER) RECOVERY 02/10/2015 - 21/10/2015	17.187	13.224	2.394	3.636	(1.946)

R/\$ EXCHANGE RATE - (R/\$ 13.3927 - 21/10/2015)

EXCHANGE RATE USED IN BASIC FUEL PRICE



INTERNATIONAL PRODUCT PRICES OF BASKET USED IN BASIC FUEL PRICE



BASIC FUEL PRICE IN SA CENTS PER LITRE

