

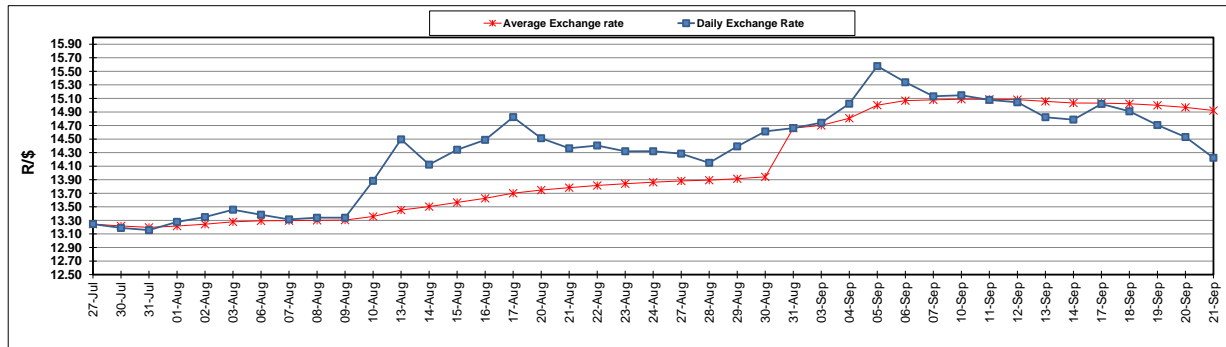
	PETROL 95 ULP	PETROL 93 ULP & LRP	DIESEL 0.05%	DIESEL 0.005%	ILL. PAR.
GAUTENG PUMP PRICE (SA c/l) AS FROM 05/09/2018	1 608.000	1 586.000	-	-	-
WHOLESALE PRICE (SA c/l) AS FROM 05/09/2018	-	-	1 440.830	1 445.230	953.088
SINGLE NATIONAL MAXIMUM RETAIL PRICE	-	-	-	-	1 233.000
BASIC FUEL PRICE - 21/09/2018 (SA c/l)	819.301	807.004	856.271	860.681	848.590
PRESS RELEASE CONTRIBUTION TO BFP 05/09/2018 - 21/09/2018 (SA c/l)	751.170	739.170	767.630	772.030	780.128
UNIT OVER/(UNDER) RECOVERY - 21/09/2018 (SA c/l)	(68.131)	(67.834)	(88.641)	(88.651)	(68.462)
AVERAGE BASIC FUEL PRICE 31/08/2018 - 21/09/2018	853.951	841.188	893.386	898.132	886.905
AVERAGE UNIT OVER/(UNDER) RECOVERY 31/08/2018 - 21/09/2018	(102.799)	(102.037)	(125.756)	(126.102)	(106.777)

ANALYSIS MOVEMENT OF AVERAGE OVER/(UNDER) RECOVERY

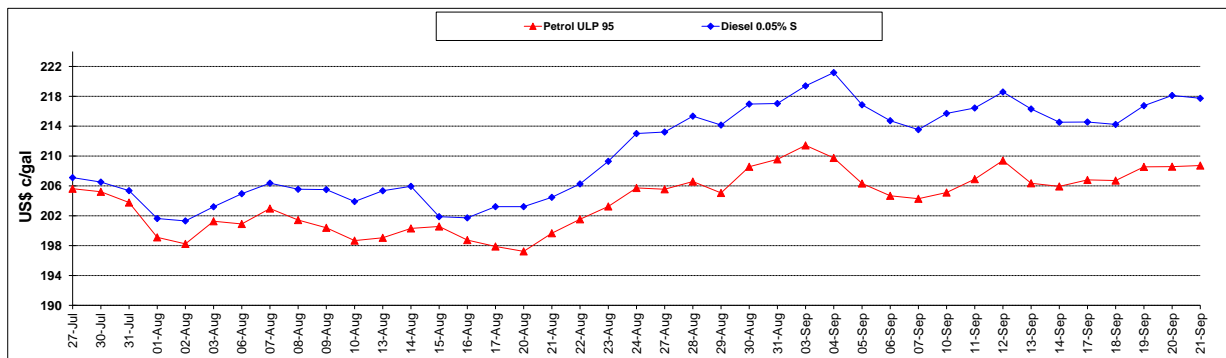
	PETROL 95	PETROL 93	DIESEL 0.05%	DIESEL 0.005%	ILL. PAR.
- MOVEMENT IN INTERNATIONAL PRODUCT PRICES	(46.812)	(46.885)	(67.182)	(67.217)	(48.628)
- MOVEMENT IN EXCHANGE RATE	(55.988)	(55.152)	(58.574)	(58.885)	(58.149)
AVERAGE UNIT OVER/(UNDER) RECOVERY 31/08/2018 - 21/09/2018	(102.799)	(102.037)	(125.756)	(126.102)	(106.777)

R/\$ EXCHANGE RATE - (R/\$14.2235 - 21/09/2018)

EXCHANGE RATE USED IN BASIC FUEL PRICE



INTERNATIONAL PRODUCT PRICES OF BASKET USED IN BASIC FUEL PRICE



BASIC FUEL PRICE IN SA CENTS PER LITRE

