

## UPDATE OF THE BASIC FUEL PRICE

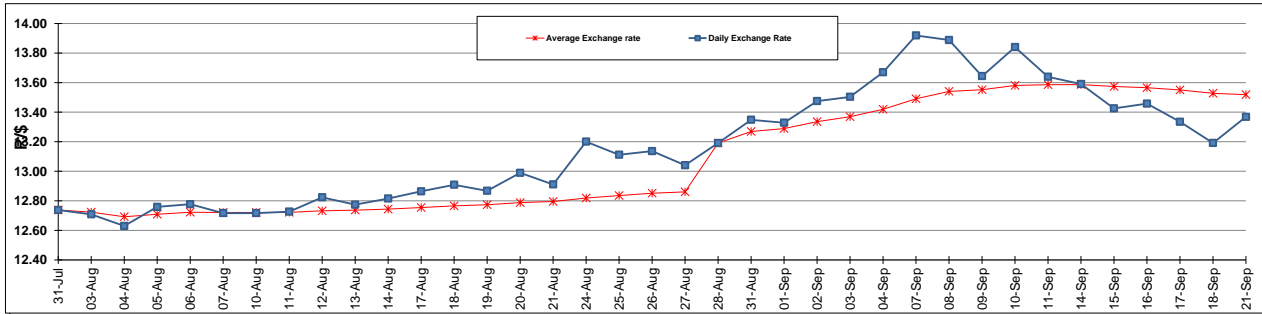
	PETROL 95 ULP	PETROL 93 ULP & LRP	DIESEL 0.05%	DIESEL 0.005%	ILL. PAR.
GAUTENG PUMP PRICE (SA c/l) AS FROM 02/09/2015	1,257.000	1,232.000	-	-	-
WHOLESALE PRICE (SA c/l) AS FROM 02/09/2015	-	-	1,040.970	1,049.370	661.828
SINGLE NATIONAL MAXIMUM RETAIL PRICE	-	-	-	-	847.000
BASIC FUEL PRICE - 21/09/2015 (SA c/l)	576.451	557.420	555.132	561.326	543.974
PRESS RELEASE CONTRIBUTION TO BFP 02/09/2015 - 21/09/2015 (SA c/l)	578.870	563.870	512.630	521.030	504.128
UNIT OVER/(UNDER) RECOVERY (SA c/l) - 21/09/2015	2.419	6.450	(42.502)	(40.296)	(39.846)
AVERAGE BASIC FUEL PRICE 28/08/2015 - 21/09/2015	590.981	568.993	571.073	577.748	560.091
AVERAGE UNIT OVER/(UNDER) RECOVERY 28/08/2015 - 21/09/2015	0.877	7.866	(48.914)	(47.718)	(46.257)

## ANALYSIS MOVEMENT OF AVERAGE OVER/(UNDER) RECOVERY

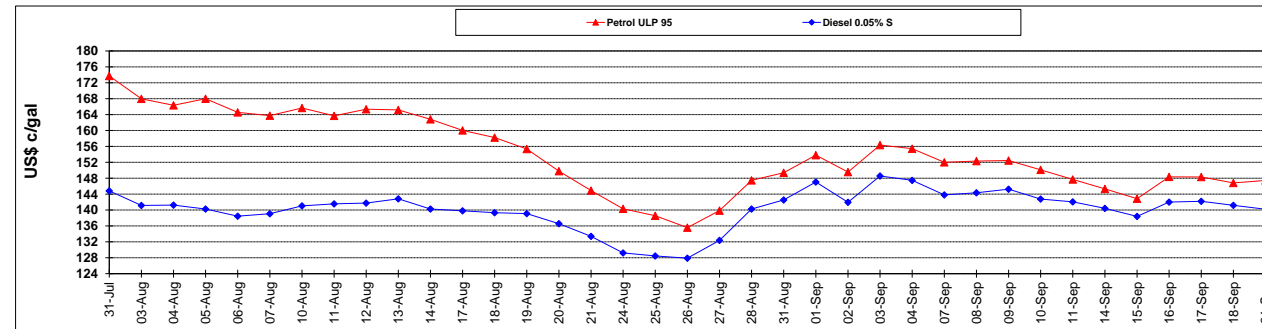
	PETROL 95	PETROL 93	DIESEL 0.05%	DIESEL 0.005%	ILL. PAR.
- MOVEMENT IN INTERNATIONAL PRODUCT PRICES	29.625	35.543	(21.134)	(19.614)	(19.012)
- MOVEMENT IN EXCHANGE RATE	(28.748)	(27.678)	(27.780)	(28.104)	(27.245)
AVERAGE UNIT OVER/(UNDER) RECOVERY 28/08/2015 - 21/09/2015	0.877	7.866	(48.914)	(47.718)	(46.257)

**R/\$ EXCHANGE RATE - (R/\$ 13.3682 - 21/09/2015)**

## EXCHANGE RATE USED IN BASIC FUEL PRICE



## INTERNATIONAL PRODUCT PRICES OF BASKET USED IN BASIC FUEL PRICE



## BASIC FUEL PRICE IN SA CENTS PER LITRE

