

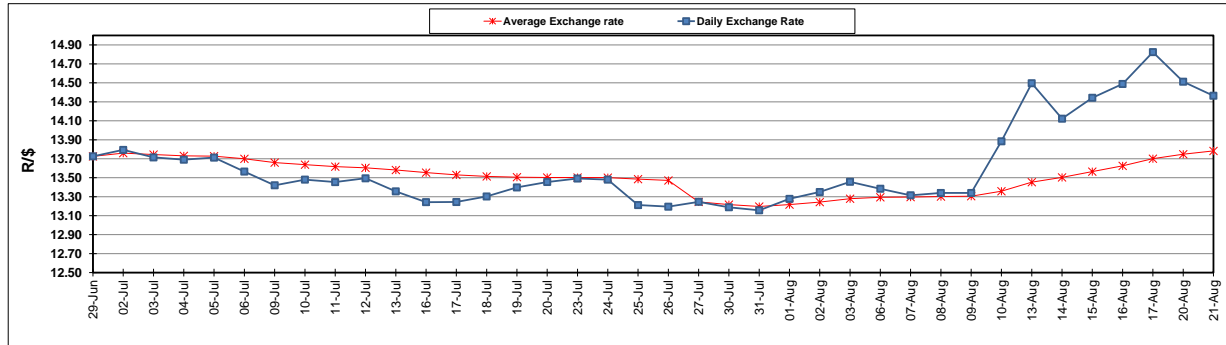
	PETROL 95 ULP	PETROL 93 ULP & LRP	DIESEL 0.05%	DIESEL 0.005%	ILL. PAR.
GAUTENG PUMP PRICE (SA c/l) AS FROM 04/08/2018	1 603.000	1 582.000	-	-	-
WHOLESALE PRICE (SA c/l) AS FROM 04/08/2018	-	-	1 440.830	1 445.230	953.088
SINGLE NATIONAL MAXIMUM RETAIL PRICE	-	-	-	-	1 233.000
BASIC FUEL PRICE - 21/08/2018 (SA c/l)	793.450	778.490	814.753	819.222	809.845
PRESS RELEASE CONTRIBUTION TO BFP 01/08/2018 - 21/08/2018 (SA c/l)	751.070	739.070	767.630	772.030	780.128
UNIT OVER/(UNDER) RECOVERY - 21/08/2018 (SA c/l)	(42.380)	(39.420)	(47.123)	(47.192)	(29.717)
AVERAGE BASIC FUEL PRICE 27/07/2018 - 21/08/2018	765.116	751.049	781.582	786.015	784.576
AVERAGE UNIT OVER/(UNDER) RECOVERY 27/06/2018 - 21/08/2018	(14.213)	(12.146)	(13.286)	(13.319)	(5.115)

ANALYSIS MOVEMENT OF AVERAGE OVER/(UNDER) RECOVERY

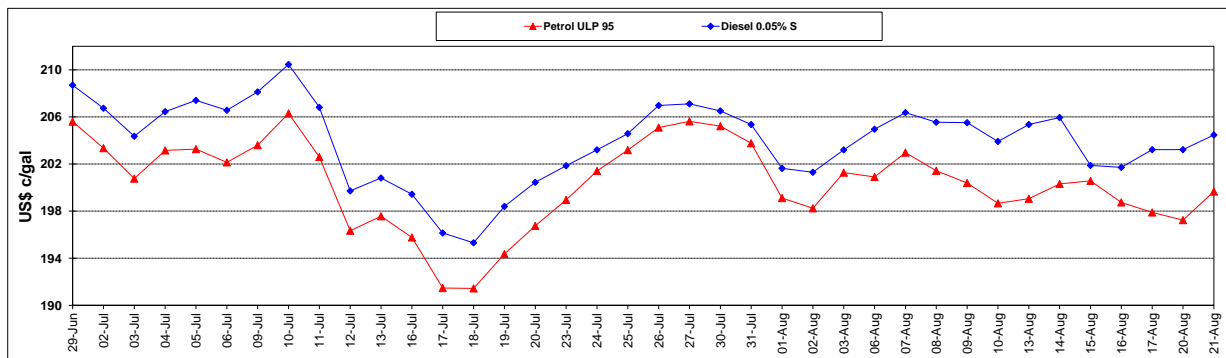
	PETROL 95	PETROL 93	DIESEL 0.05%	DIESEL 0.005%	ILL. PAR.
- MOVEMENT IN INTERNATIONAL PRODUCT PRICES	3.074	4.823	4.374	4.441	12.611
- MOVEMENT IN EXCHANGE RATE	(17.287)	(16.969)	(17.659)	(17.759)	(17.726)
AVERAGE UNIT OVER/(UNDER) RECOVERY 27/07/2018 - 21/08/2018	(14.213)	(12.146)	(13.286)	(13.319)	(5.115)

R/\$ EXCHANGE RATE - (R/\$14.3643 - 21/08/2018)

EXCHANGE RATE USED IN BASIC FUEL PRICE



INTERNATIONAL PRODUCT PRICES OF BASKET USED IN BASIC FUEL PRICE



BASIC FUEL PRICE IN SA CENTS PER LITRE

