

UPDATE OF THE BASIC FUEL PRICE

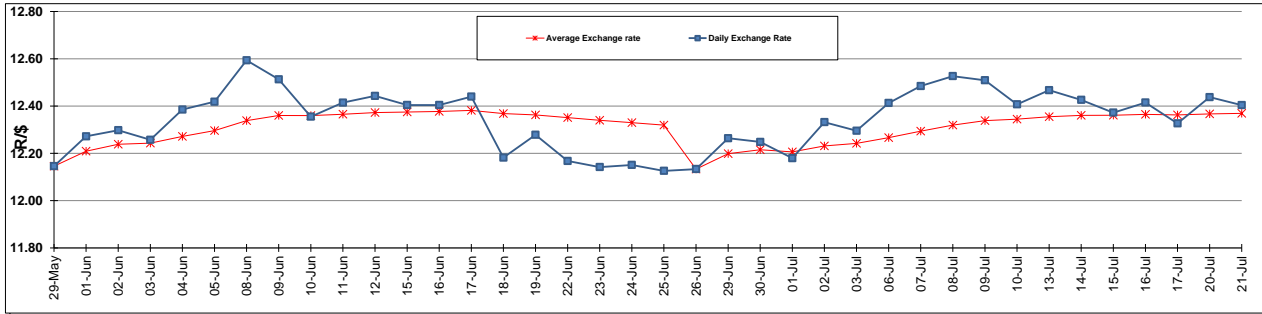
	PETROL 95 ULP	PETROL 93 ULP & LRP	DIESEL 0.05%	DIESEL 0.005%	ILL. PAR.
GAUTENG PUMP PRICE (SA c/l) AS FROM 01/07/2015	1,377.000	1,352.000	-	-	-
WHOLESALE PRICE (SA c/l) AS FROM 01/07/2015	-	-	1,170.790	1,174.190	786.828
SINGLE NATIONAL MAXIMUM RETAIL PRICE	-	-	-	-	1,014.000
BASIC FUEL PRICE - 21/07/2015 (SA c/l)	635.529	616.709	546.908	552.143	537.252
PRESS RELEASE CONTRIBUTION TO BFP 01/07/2015 - 21/07/2015 (SA c/l)	703.650	688.650	642.630	646.030	629.128
UNIT OVER/(UNDER) RECOVERY (SA c/l) - 21/07/2015	68.121	71.941	95.722	93.887	91.876
AVERAGE BASIC FUEL PRICE 26/06/2015 - 21/07/2015	658.746	642.143	576.970	582.575	566.969
AVERAGE UNIT OVER/(UNDER) RECOVERY 26/06/2015 - 21/07/2015	38.070	39.174	64.994	62.788	61.159

ANALYSIS MOVEMENT OF AVERAGE OVER/(UNDER) RECOVERY

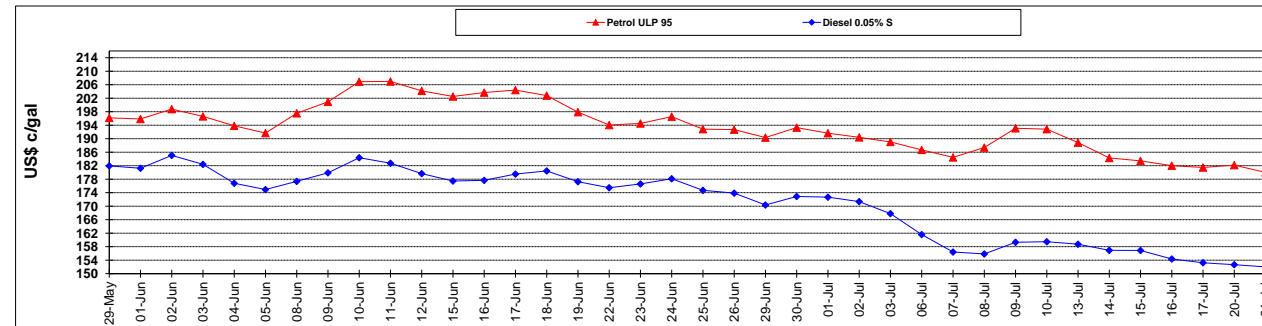
	PETROL 95	PETROL 93	DIESEL 0.05%	DIESEL 0.005%	ILL. PAR.
- MOVEMENT IN INTERNATIONAL PRODUCT PRICES	40.702	41.739	67.297	65.115	63.423
- MOVEMENT IN EXCHANGE RATE	(2.631)	(2.565)	(2.304)	(2.327)	(2.264)
AVERAGE UNIT OVER/(UNDER) RECOVERY 26/06/2015 - 21/07/2015	38.070	39.174	64.994	62.788	61.159

R/\$ EXCHANGE RATE - (R/\$ 12.4040 - 21/07/2015)

EXCHANGE RATE USED IN BASIC FUEL PRICE



INTERNATIONAL PRODUCT PRICES OF BASKET USED IN BASIC FUEL PRICE



BASIC FUEL PRICE IN SA CENTS PER LITRE

