

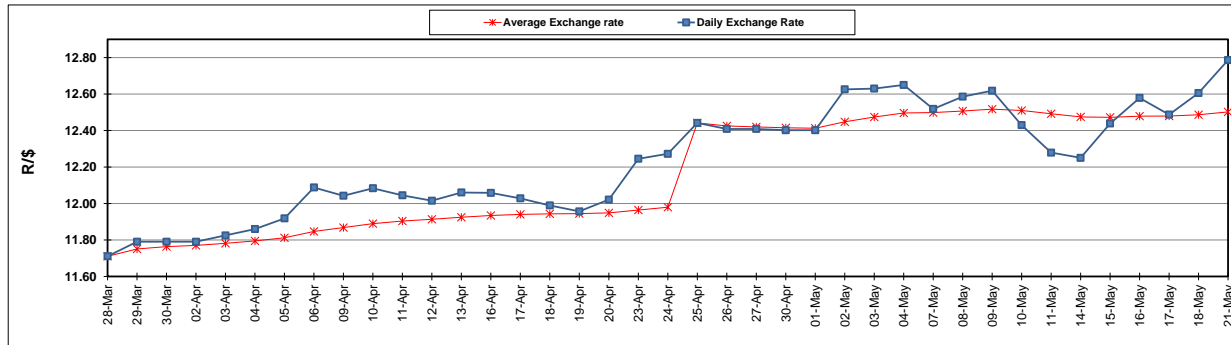
	PETROL 95 ULP	PETROL 93 ULP & LRP	DIESEL 0.05%	DIESEL 0.005%	ILL. PAR.
GAUTENG PUMP PRICE (SA c/l) AS FROM 02/05/2018	1 497.000	1 472.000	-	-	-
WHOLESALE PRICE (SA c/l) AS FROM 02/05/2018	-	-	1 333.830	1 338.230	845.088
SINGLE NATIONAL MAXIMUM RETAIL PRICE	-	-	-	-	1 089.000
BASIC FUEL PRICE - 21/05/2018 (SA c/l)	762.565	750.283	775.008	781.181	782.467
PRESS RELEASE CONTRIBUTION TO BFP 02/05/2018 - 21/05/2018 (SA c/l)	645.070	630.070	660.630	665.030	672.128
UNIT OVER/(UNDER) RECOVERY - 21/05/2018 (SA c/l)	(117.495)	(120.213)	(114.378)	(116.151)	(110.339)
AVERAGE BASIC FUEL PRICE 25/04/2018 - 21/05/2018	712.001	699.034	730.051	735.829	740.605
AVERAGE UNIT OVER/(UNDER) RECOVERY 25/04/2018 - 21/05/2018	(79.825)	(81.858)	(84.947)	(86.062)	(82.162)

ANALYSIS MOVEMENT OF AVERAGE OVER/(UNDER) RECOVERY

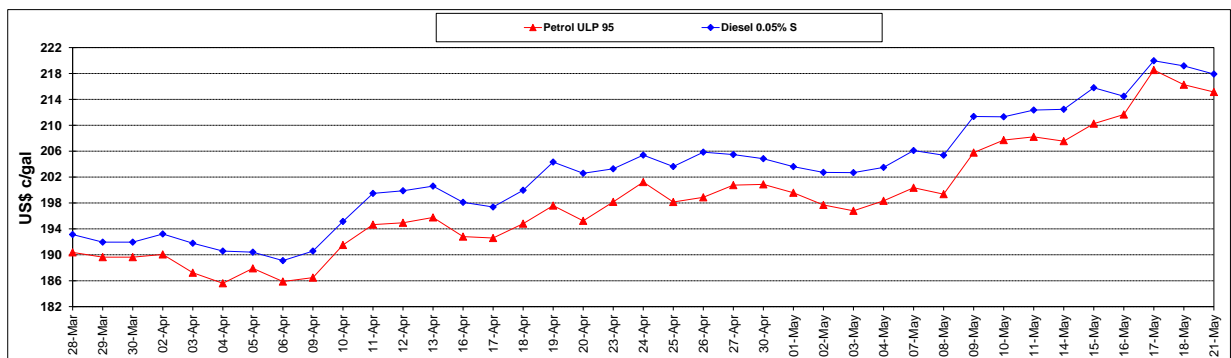
	PETROL 95	PETROL 93	DIESEL 0.05%	DIESEL 0.005%	ILL. PAR.
- MOVEMENT IN INTERNATIONAL PRODUCT PRICES	(50.053)	(52.628)	(54.419)	(55.293)	(51.192)
- MOVEMENT IN EXCHANGE RATE	(29.773)	(29.231)	(30.528)	(30.769)	(30.969)
AVERAGE UNIT OVER/(UNDER) RECOVERY 25/04/2018 - 21/05/2018	(79.825)	(81.858)	(84.947)	(86.062)	(82.162)

R/\$ EXCHANGE RATE - (R/\$12.7863 - 21/05/2018)

EXCHANGE RATE USED IN BASIC FUEL PRICE



INTERNATIONAL PRODUCT PRICES OF BASKET USED IN BASIC FUEL PRICE



BASIC FUEL PRICE IN SA CENTS PER LITRE

