

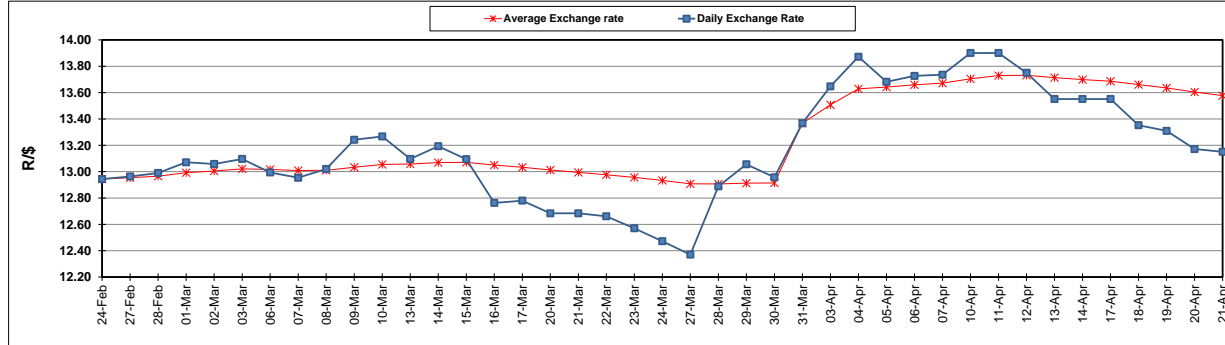
	PETROL 95 ULP	PETROL 93 ULP & LRP	DIESEL 0.05%	DIESEL 0.005%	ILL. PAR.
GAUTENG PUMP PRICE (SA c/l) AS FROM 05/04/2017	1 330.000	1 308.000	-	-	-
WHOLESALE PRICE (SA c/l) AS FROM 05/04/2017	-	-	1 150.330	1 152.730	702.088
SINGLE NATIONAL MAXIMUM RETAIL PRICE	-	-	-	-	901.000
BASIC FUEL PRICE - 21/04/2017 (SA c/l)	585.232	568.489	549.908	554.014	545.856
PRESS RELEASE CONTRIBUTION TO BFP 05/04/2017 - 21/04/2017 (SA c/l)	548.670	536.670	538.630	541.030	531.128
UNIT OVER/(UNDER) RECOVERY (SA c/l) - 21/04/2017	(36.562)	(31.819)	(11.278)	(12.984)	(14.728)
AVERAGE BASIC FUEL PRICE 31/03/2017 - 21/04/2017	613.853	597.578	582.725	586.756	579.490
AVERAGE UNIT OVER/(UNDER) RECOVERY 31/03/2017 - 21/04/2017	(53.146)	(49.246)	(34.720)	(36.351)	(38.612)

ANALYSIS MOVEMENT OF AVERAGE OVER/(UNDER) RECOVERY

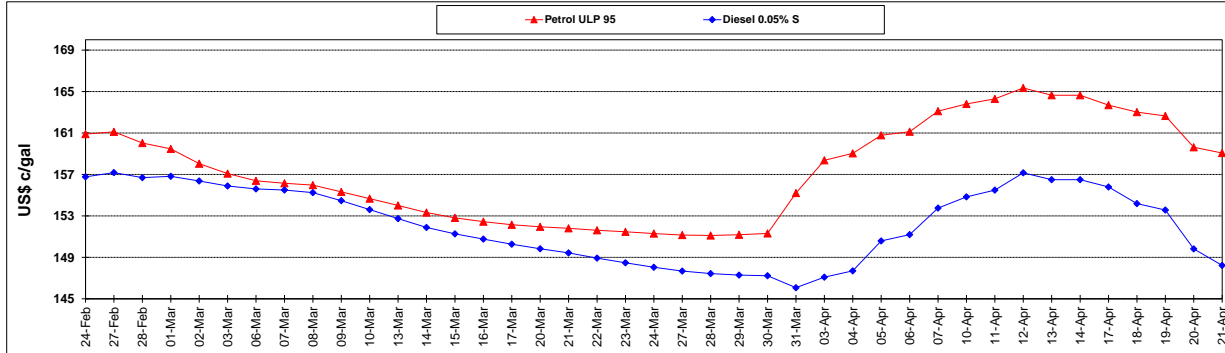
	PETROL 95	PETROL 93	DIESEL 0.05%	DIESEL 0.005%	ILL. PAR.
- MOVEMENT IN INTERNATIONAL PRODUCT PRICES	(23.227)	(20.120)	(6.319)	(7.753)	(10.368)
- MOVEMENT IN EXCHANGE RATE	(29.918)	(29.125)	(28.401)	(28.598)	(28.244)
AVERAGE UNIT OVER/(UNDER) RECOVERY 31/03/2017 - 21/04/2017	(53.146)	(49.246)	(34.720)	(36.351)	(38.612)

R/\$ EXCHANGE RATE - (R/\$ 13.1510 - 21/04/2017)

EXCHANGE RATE USED IN BASIC FUEL PRICE



INTERNATIONAL PRODUCT PRICES OF BASKET USED IN BASIC FUEL PRICE



BASIC FUEL PRICE IN SA CENTS PER LITRE

