

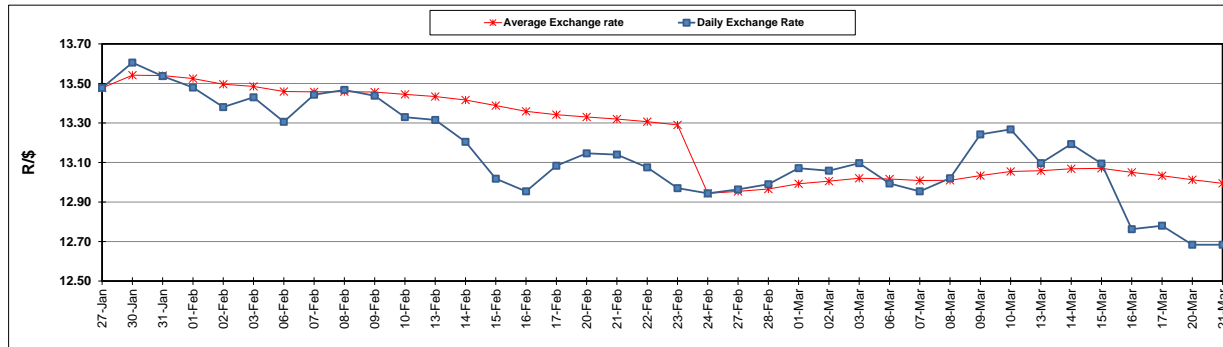
	PETROL 95 ULP	PETROL 93 ULP & LRP	DIESEL 0.05%	DIESEL 0.005%	ILL. PAR.
GAUTENG PUMP PRICE (SA c/l) AS FROM 01/03/2017	1 354.000	1 330.000	-	-	-
WHOLESALE PRICE (SA c/l) AS FROM 01/03/2017	-	-	1 160.830	1 163.230	750.588
SINGLE NATIONAL MAXIMUM RETAIL PRICE	-	-	-	-	966.000
BASIC FUEL PRICE - 21/03/2017 (SA c/l)	534.153	522.389	513.916	516.621	507.849
PRESS RELEASE CONTRIBUTION TO BFP 01/03/2017 - 21/03/2017 (SA c/l)	612.870	598.870	588.630	591.030	583.128
UNIT OVER/(UNDER) RECOVERY (SA c/l) - 21/03/2017	78.717	76.481	74.714	74.409	75.279
AVERAGE BASIC FUEL PRICE 24/02/2017 - 21/03/2017	555.326	543.576	549.917	552.820	542.184
AVERAGE UNIT OVER/(UNDER) RECOVERY 24/02/2017- 21/03/2017	58.877	56.627	39.046	38.544	42.277

ANALYSIS MOVEMENT OF AVERAGE OVER/(UNDER) RECOVERY

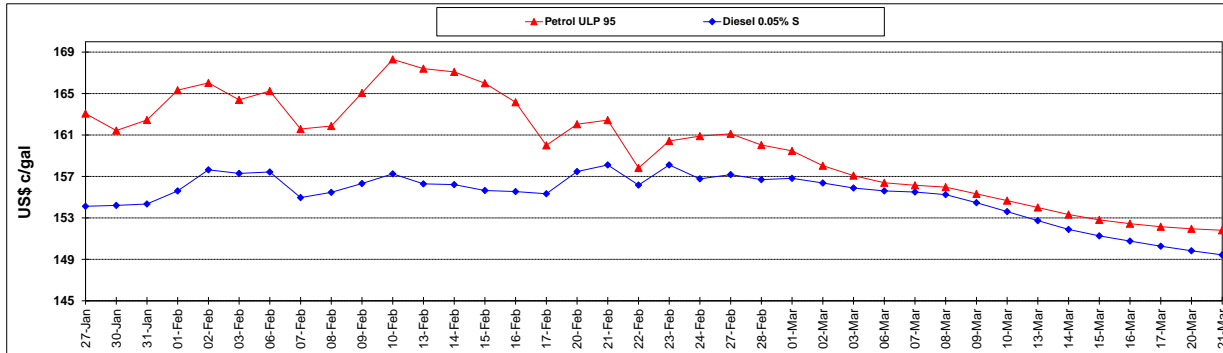
	PETROL 95	PETROL 93	DIESEL 0.05%	DIESEL 0.005%	ILL. PAR.
- MOVEMENT IN INTERNATIONAL PRODUCT PRICES	59.911	57.639	40.070	39.573	43.287
- MOVEMENT IN EXCHANGE RATE	(1.034)	(1.012)	(1.024)	(1.030)	(1.010)
AVERAGE UNIT OVER/(UNDER) RECOVERY 24/02/2017 - 21/03/2017	58.877	56.627	39.046	38.544	42.277

R/\$ EXCHANGE RATE - (R/\$ 12.6838 - 21/03/2017)

EXCHANGE RATE USED IN BASIC FUEL PRICE



INTERNATIONAL PRODUCT PRICES OF BASKET USED IN BASIC FUEL PRICE



BASIC FUEL PRICE IN SA CENTS PER LITRE

