

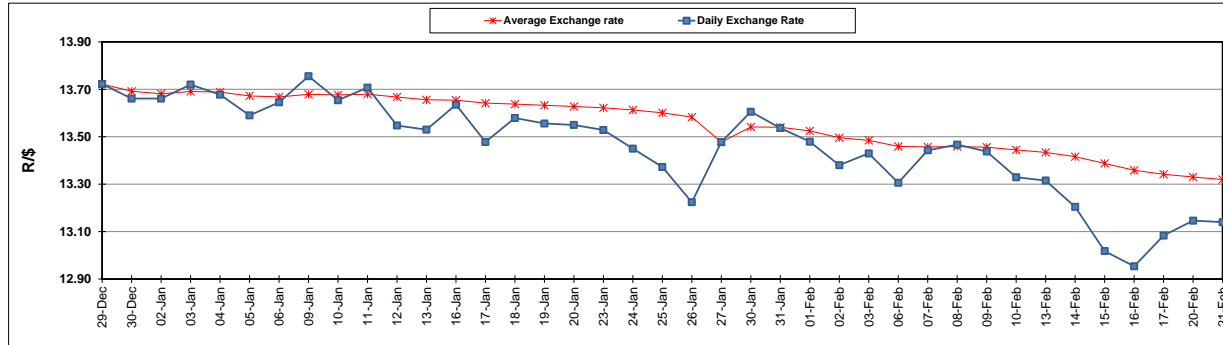
	PETROL 95 ULP	PETROL 93 ULP & LRP	DIESEL 0.05%	DIESEL 0.005%	ILL. PAR.
GAUTENG PUMP PRICE (SA c/l) AS FROM 01/02/2017	1 362.000	1 338.000	-	-	-
WHOLESALE PRICE (SA c/l) AS FROM 01/02/2017	-	-	1 162.830	1 165.230	758.588
SINGLE NATIONAL MAXIMUM RETAIL PRICE	-	-	-	-	976.000
BASIC FUEL PRICE - 21/02/2017 (SA c/l)	599.015	589.309	586.753	588.956	582.202
PRESS RELEASE CONTRIBUTION TO BFP 01/02/2017 - 21/02/2017 (SA c/l)	620.870	606.870	590.630	593.030	591.128
UNIT OVER/(UNDER) RECOVERY (SA c/l) - 21/02/2017	21.855	17.561	3.877	4.074	8.926
AVERAGE BASIC FUEL PRICE 27/01/2017 - 21/02/2017	612.319	598.189	586.687	589.096	581.083
AVERAGE UNIT OVER/(UNDER) RECOVERY 27/01/2017- 21/02/2017	3.718	3.848	0.443	0.434	7.212

ANALYSIS MOVEMENT OF AVERAGE OVER/(UNDER) RECOVERY

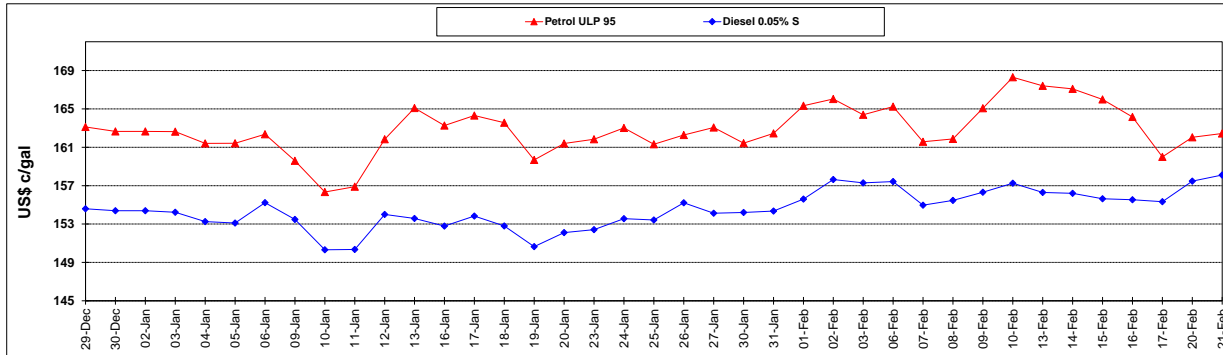
	PETROL 95	PETROL 93	DIESEL 0.05%	DIESEL 0.005%	ILL. PAR.
- MOVEMENT IN INTERNATIONAL PRODUCT PRICES	(8.391)	(7.981)	(11.159)	(11.216)	(4.279)
- MOVEMENT IN EXCHANGE RATE	12.109	11.829	11.602	11.650	11.491
AVERAGE UNIT OVER/(UNDER) RECOVERY 27/01/2017 - 21/02/2017	3.718	3.848	0.443	0.434	7.212

R/\$ EXCHANGE RATE - (R/\$ 13.1400- 21/02/2017)

EXCHANGE RATE USED IN BASIC FUEL PRICE



INTERNATIONAL PRODUCT PRICES OF BASKET USED IN BASIC FUEL PRICE



BASIC FUEL PRICE IN SA CENTS PER LITRE

