

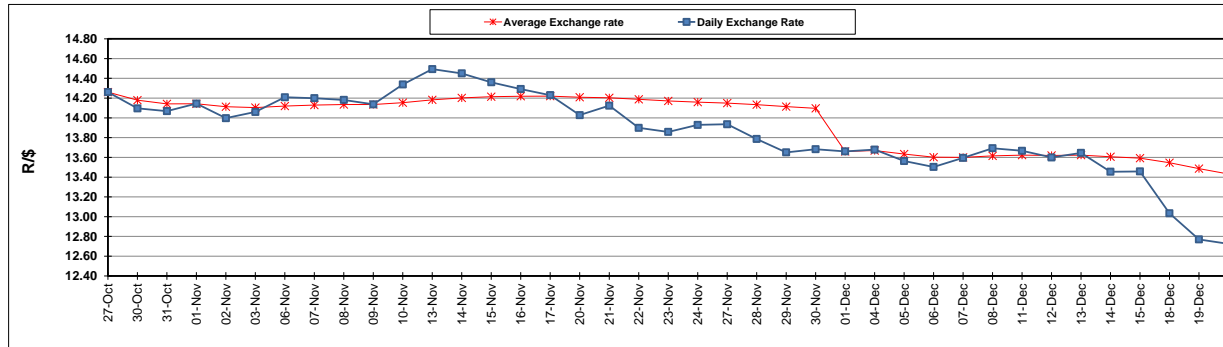
	PETROL 95 ULP	PETROL 93 ULP & LRP	DIESEL 0.05%	DIESEL 0.005%	ILL. PAR.
GAUTENG PUMP PRICE (SA c/l) AS FROM 07/12/2017	1 476.000	1 449.000	-	-	-
WHOLESALE PRICE (SA c/l) AS FROM 07/12/2017	-	-	1 295.630	1 302.030	865.388
SINGLE NATIONAL MAXIMUM RETAIL PRICE	-	-	-	-	1 119.000
BASIC FUEL PRICE - 20/12/2017 (SA c/l)	623.096	612.260	635.271	637.894	637.265
PRESS RELEASE CONTRIBUTION TO BFP 05/12/2017 - 20/12/2017 (SA c/l)	686.170	669.170	684.630	691.030	695.128
UNIT OVER/(UNDER) RECOVERY - 20/12/2017 (SA c/l)	63.074	56.910	49.359	53.136	57.863
AVERAGE BASIC FUEL PRICE 01/12/2017 - 20/12/2017	648.923	636.748	658.435	661.910	660.775
AVERAGE UNIT OVER/(UNDER) RECOVERY 01/12/2017 - 20/12/2017	22.869	18.044	13.123	16.691	18.496

ANALYSIS MOVEMENT OF AVERAGE OVER/(UNDER) RECOVERY

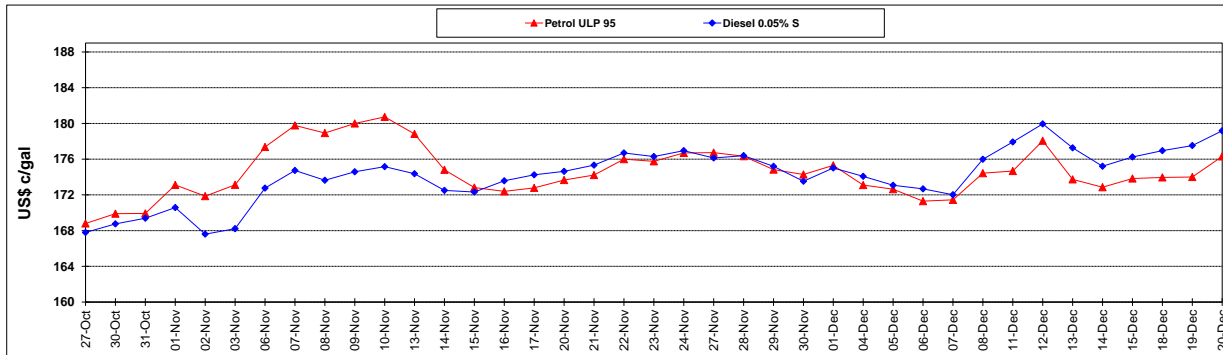
	PETROL 95	PETROL 93	DIESEL 0.05%	DIESEL 0.005%	ILL. PAR.
- MOVEMENT IN INTERNATIONAL PRODUCT PRICES	(9.230)	(13.453)	(19.445)	(16.050)	(14.189)
- MOVEMENT IN EXCHANGE RATE	32.098	31.496	32.569	32.741	32.685
AVERAGE UNIT OVER/(UNDER) RECOVERY 01/12/2017 - 20/12/2017	22.869	18.044	13.123	16.691	18.496

R/\$ EXCHANGE RATE - (R/\$ 12.7250 - 20/12/2017)

EXCHANGE RATE USED IN BASIC FUEL PRICE



INTERNATIONAL PRODUCT PRICES OF BASKET USED IN BASIC FUEL PRICE



BASIC FUEL PRICE IN SA CENTS PER LITRE

