

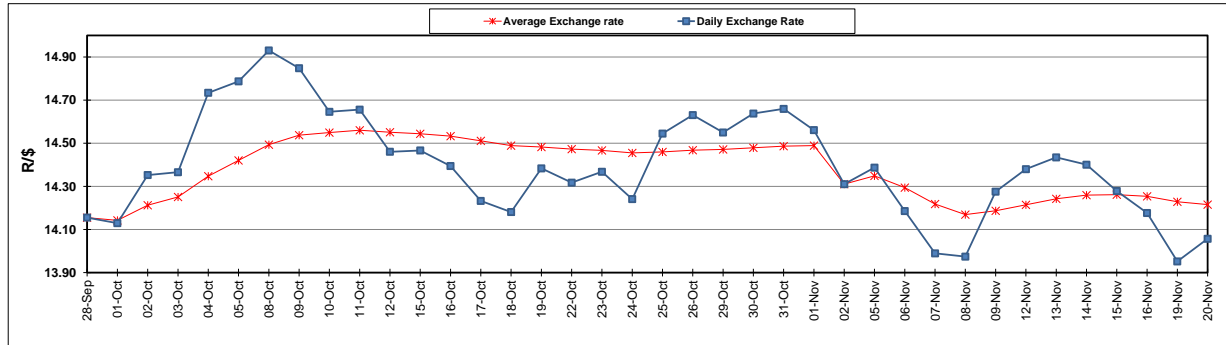
	PETROL 95 ULP	PETROL 93 ULP & LRP	DIESEL 0.05%	DIESEL 0.005%	ILL. PAR.
GAUTENG PUMP PRICE (SA c/l) AS FROM 07/11/2018	1 708.000	1 685.000	-	-	-
WHOLESALE PRICE (SA c/l) AS FROM 07/11/2018	-	-	1 612.750	1 620.150	1 085.088
SINGLE NATIONAL MAXIMUM RETAIL PRICE	-	-	-	-	1 409.000
BASIC FUEL PRICE - 20/11/2018 (SA c/l)	631.916	620.062	749.938	755.602	759.044
PRESS RELEASE CONTRIBUTION TO BFP 07/11/2018 - 20/11/2018 (SA c/l)	829.250	816.250	917.630	925.030	912.128
UNIT OVER/(UNDER) RECOVERY - 20/11/2018 (SA c/l)	197.334	196.188	167.692	169.428	153.084
AVERAGE BASIC FUEL PRICE 02/11/2018 - 20/11/2018	669.824	659.994	802.545	808.794	805.295
AVERAGE UNIT OVER/(UNDER) RECOVERY 02/11/2018 - 20/11/2018	164.484	161.314	109.085	109.544	100.372

### ANALYSIS MOVEMENT OF AVERAGE OVER/(UNDER) RECOVERY

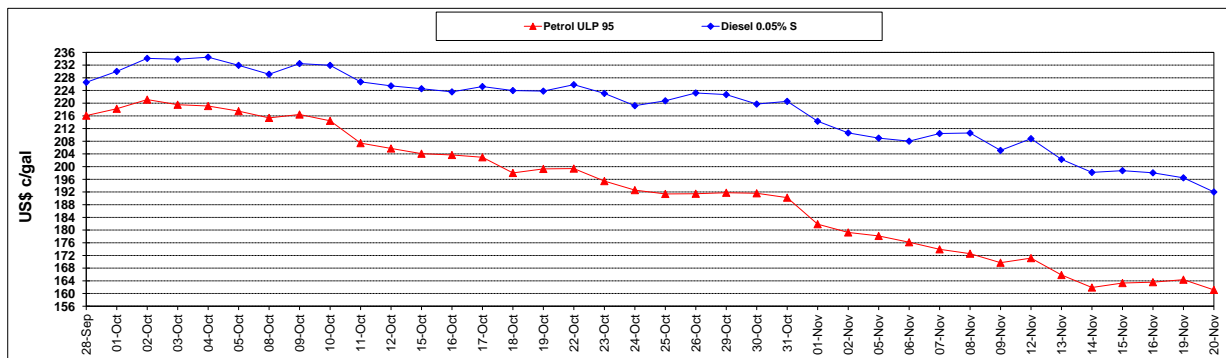
	PETROL 95	PETROL 93	DIESEL 0.05%	DIESEL 0.005%	ILL. PAR.
- MOVEMENT IN INTERNATIONAL PRODUCT PRICES	151.583	148.602	93.627	93.966	84.860
- MOVEMENT IN EXCHANGE RATE	12.901	12.712	15.458	15.578	15.511
AVERAGE UNIT OVER/(UNDER) RECOVERY 02/11/2018 - 20/11/2018	164.484	161.314	109.085	109.544	100.372

R/\$ EXCHANGE RATE - (R/\$14.0568 - 20/11/2018)

### EXCHANGE RATE USED IN BASIC FUEL PRICE



### INTERNATIONAL PRODUCT PRICES OF BASKET USED IN BASIC FUEL PRICE



### BASIC FUEL PRICE IN SA CENTS PER LITRE

